



Example: Census 2016 Community Snapshot Toolkit

Prepared by Statistics Canada

May 2016



Create Your Community Snapshot



Feature your community using census data.



Statistics
Canada Statistique
Canada

Canada 

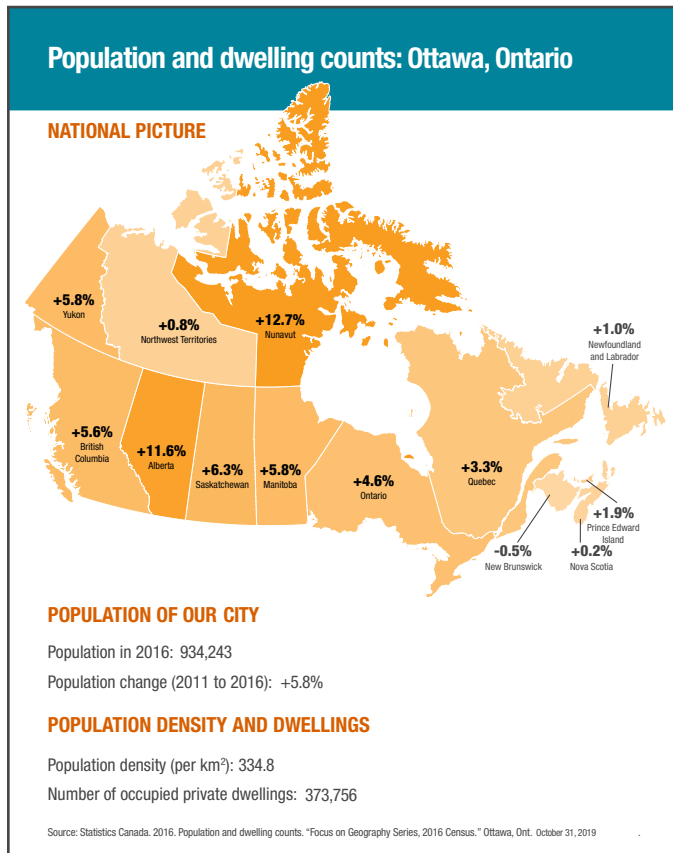
Introduction

This toolkit provides all the information you need to get the most out of census data about your community. Communities all over Canada use population counts, educational information, and labour force data from the census to make timely and informed decisions. Use this toolkit to help create individualized infographics for your community.

Read the [terms of use](#) on page 7, and then follow the easy steps to create one or both of the following visualizations:

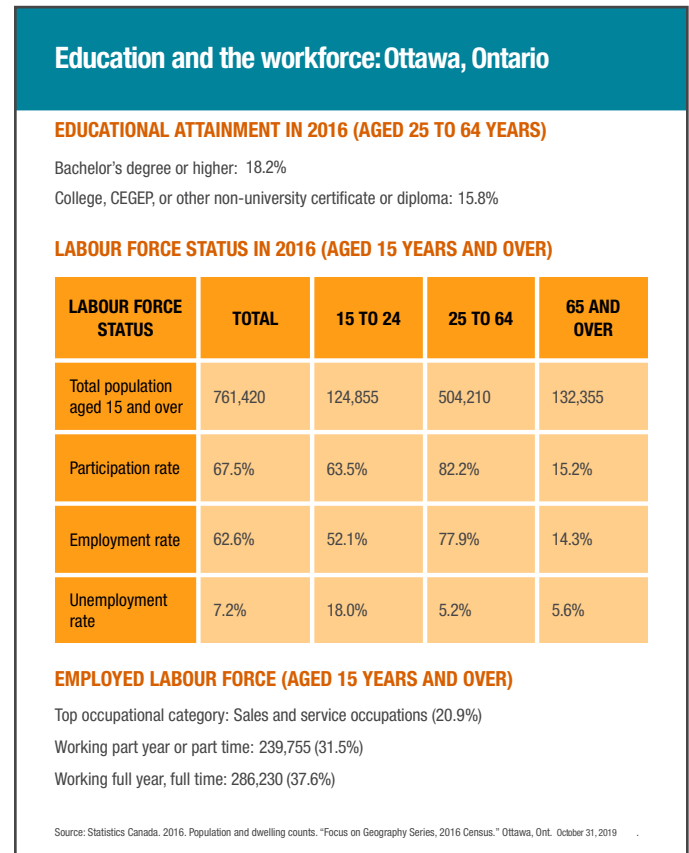
THE MAP TEMPLATE

This template shows your community's population and dwelling counts, and how your community compares with the rest of Canada.



THE TABLE TEMPLATE

This template shows your community's educational attainment and labour force data.



Steps to build the map template

1

Visit the [Focus on Geography Series](#) web page. Search for your community by entering its name into the search bar. You will be redirected to your community's page.

2

Find all the data you need on your community's page, and fill in the blanks on the template.

3

Select **FINISH** at the bottom of page 4 of this toolkit. Now you can save your map template.

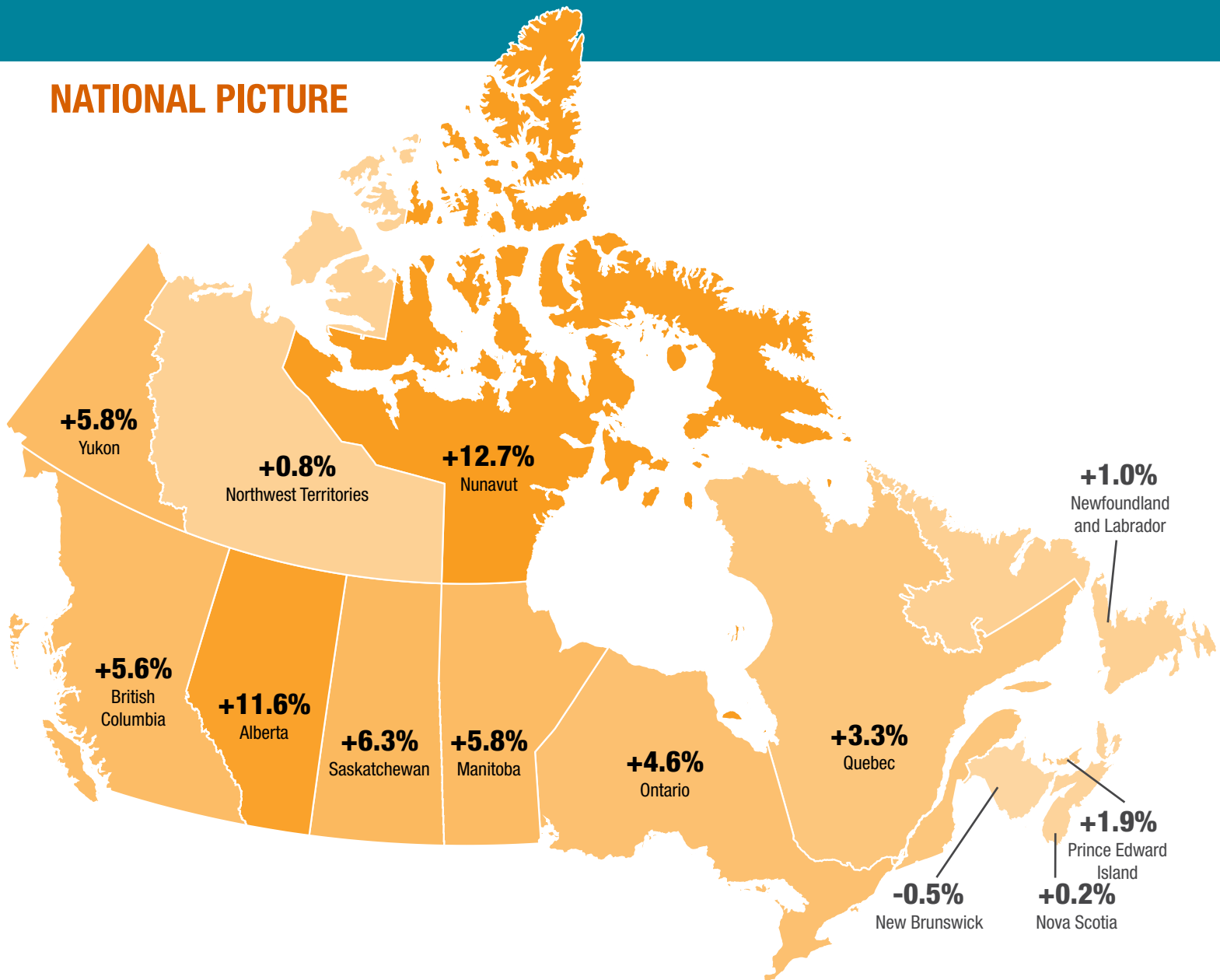
4

Print it or share it! To post your community snapshot on social media or your local bulletin board, save it as an image. Go to www.pdf2jpg.net, upload the file, and convert it to a jpg.



Population and dwelling counts:

NATIONAL PICTURE



POPULATION OF OUR

Population in 2016:

Population change (2011 to 2016):

POPULATION DENSITY AND DWELLINGS

Population density (per km²):

Number of occupied private dwellings:

Source: Statistics Canada. 2016. Population and dwelling counts. "Focus on Geography Series, 2016 Census." Ottawa, Ont.

Steps to build the table template

1

Visit the [Focus on Geography Series](#) web page. Search for your community by entering its name into the search bar. You will be redirected to your community's page.

2

Find all the data you need by selecting **Education** or **Labour** from the dropdown menu at the top of your community's page. Fill in the blanks on the template.

3

Select **FINISH** at the bottom of page 6 of this toolkit. Now you can save your table template.

4

Print it or share it! To post your community snapshot on social media or your local bulletin board, save it as an image. Go to www.pdf2jpg.net, upload the file, and convert it to a jpg.



Education and the workforce:

EDUCATIONAL ATTAINMENT IN 2016 (AGED 25 TO 64 YEARS)

Bachelor's degree or higher:

College, CEGEP, or other non-university certificate or diploma:

LABOUR FORCE STATUS IN 2016 (AGED 15 YEARS AND OVER)

LABOUR FORCE STATUS	TOTAL	15 TO 24	25 TO 64	65 AND OVER
Total population aged 15 and over				
Participation rate				
Employment rate				
Unemployment rate				

EMPLOYED LABOUR FORCE (AGED 15 YEARS AND OVER)

Top occupational category:

Working part year or part time:

Working full year, full time:

Terms of use

OFFICIAL LANGUAGES

All materials are available in both English and French. We encourage you to publish and distribute materials in both official languages.

MODIFICATIONS OF MATERIALS

Alterations may be made to this community snapshot toolkit templates to better fit your needs. **However**, the Government of Canada wordmark or identifiers **cannot** be used.

Statistics Canada is providing this toolkit for creating community snapshots with census data. However, **the end result is not a Statistics Canada product**.

CENSUS DATA PRODUCT — FOCUS ON GEOGRAPHY SERIES

The online data product that you are encouraged to use is the [Focus on Geography Series](#). It will help you find the necessary data to complete your community snapshot. It presents data highlights for each of the major data topics from the 2016 Census, focusing on your selected geographic area. These data highlights are presented through text, tables and figures. A map image of the geographic area is also included.

Other census data products are also available on the Statistics Canada website, including the [Census Profile](#).

Statistics Canada encourages the downloading and reuse of its data, but also emphasizes the importance of properly citing the original source.

SOURCING CENSUS DATA

References are important when you are using the data or ideas of others in your written work; references credit your sources and enable your readers to find those sources. Authors and researchers must give full credit for any Statistics Canada data, analysis or other content material used or referred to in their community snapshot. Please add the date the data was accessed to the source field on the bottom of pages 4 and 6. More details can be found on the [How to Cite Statistics Canada Products](#) web page.

CENSUS DICTIONARY

The [Census of Population Dictionary](#) is an online reference document that contains detailed definitions of Census of Population concepts. By referring to this dictionary, both beginner and intermediate data users will gain a better understanding of the data.

The Census of Population Dictionary also contains information regarding census geographic levels, along with the census geographic structure.

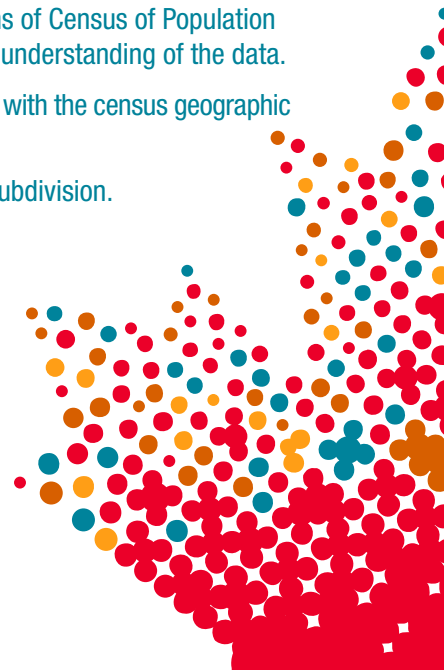
In the context of the census geographic structure, the term “community” is associated with census subdivision.

ACCESSING LINKS

When you open a link, if a security pop-up asks you to allow or block the links, select “allow.”

If you are unable to open the hyperlinks in this toolkit, a list of all the links is provided on page 8.

For more information on Statistics Canada’s terms of use, please [email us](#).



Links

Focus on Geography Series

<http://www12.statcan.gc.ca/census-recensement/2016/as-sa/fogs-spg/Index-eng.cfm>

Census Profile

<http://www12.statcan.gc.ca/census-recensement/2016/dp-pd/prof/index.cfm?Lang=E&TABID=1>

Census data products

<http://www12.statcan.gc.ca/census-recensement/2016/dp-pd/index-eng.cfm>

Census of Population Dictionary

<http://www12.statcan.gc.ca/census-recensement/2016/ref/dict/index-eng.cfm>

Census geographic structure

http://www12.statcan.gc.ca/census-recensement/2016/ref/dict/figures/f1_1-eng.cfm

How to Cite Statistics Canada Products

<http://www.statcan.gc.ca/pub/12-591-x/12-591-x2009001-eng.htm>

How to convert a PDF to a JPG

<http://www.pdf2jpg.net>

Inquiries about this product? Contact us at:

statcan.censuscommunications-communicationsdurecensement.statcan@canada.ca