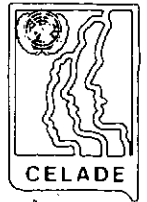


3222 (7910) c-2

Centro Latinoamericano de Demografía

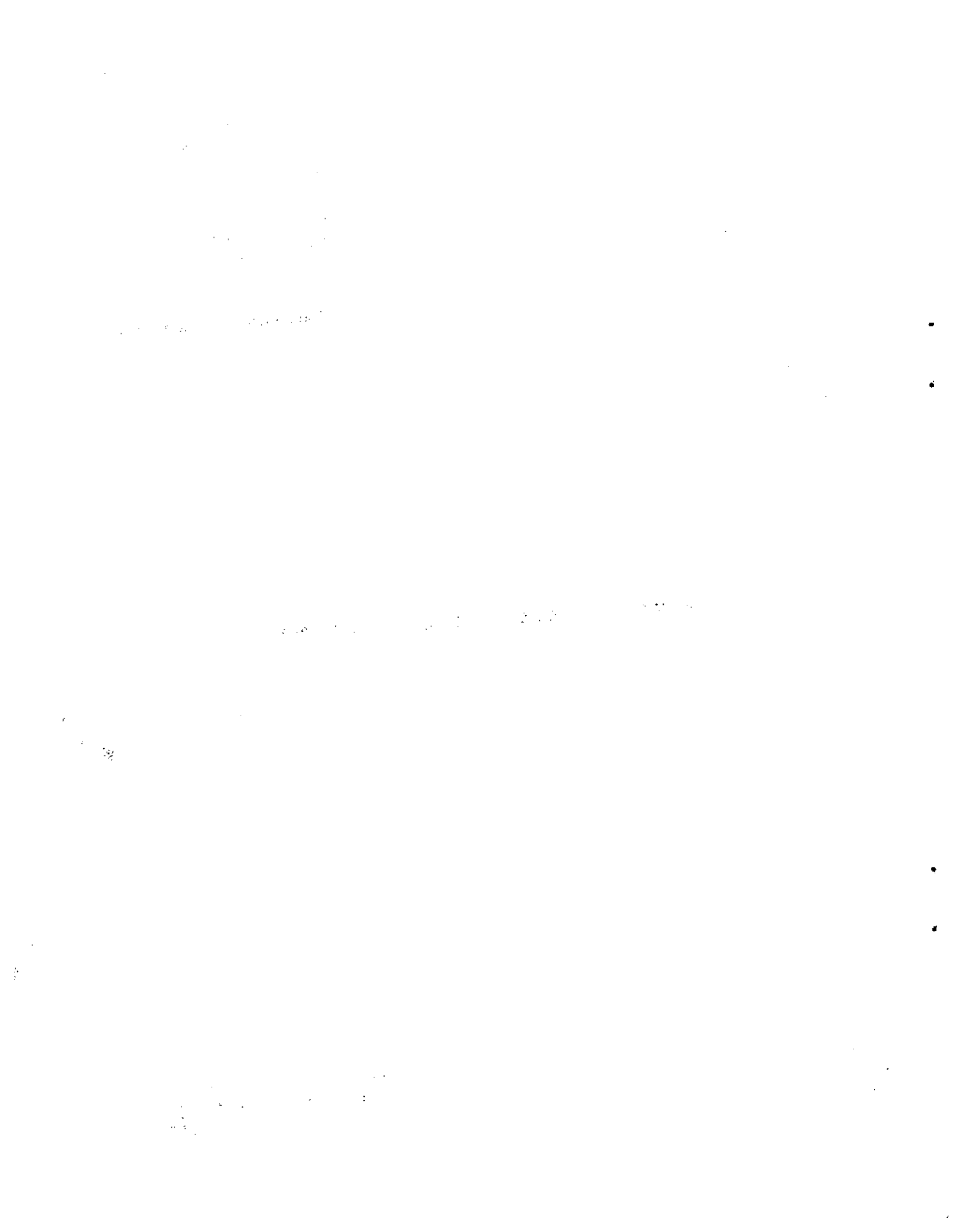


Documentos de Seminario

MENSAJES DE ERROR DEL COMPILADOR WATFOR /360

DS/5
1975
50.

CURSO LATINOAMERICANO DE
PROCESAMIENTO DE DATOS (PED)
APLICADO A LAS CIENCIAS SOCIALES



/360 WATFOR COMPILER ERROR MESSAGES

ASSIGN STATEMENTS AND VARIABLES

- AS-2 Attempt to Redefine an Assigned Variable in an Arithmetic Statement
- AS-3 Assigned Variable Used in an Arithmetic Expression
- AS-4 Assigned Variable Cannot be Half Word Integer
- AS-5 Attempt to Redefine an Assign Variable in an Input List

BLOCK DATA STATEMENT

- BD-0 Executable statement in Block Data Subprogramme
- BD-1 Improper Block Data Statement

CARD FORMAT AND CONTENTS

- CC-0 Columns 1-5 of Continuation Card not Blank
Probable Cause - Statement Punched to Left of Column 7
- CC-1 Too Many Continuation Cards (Maximum of 5)
- CC-2 Invalid Character in Fortran Statement '\$' Inserted in Source Listing
- CC-3 First Card of a Programme is a Continuation Card
Probable Cause - Statement Punched to Left of Column 7
- CC-4 Statement Too Long to Compile (Scan Stack Overflow)
- CC-5 Blank Card Encountered
- CC-6 Keypunch Used Differs from Keypunch Specified on Job Card
- CC-7 First Character of Statement not Alphabetic
- CC-8 Invalid Character (S) Concatenated with Fortran Keyword
- CC-9 Invalid Characters in Col 1-5 Statement Number Ignored
Probable Cause - Statement Punched to Left of Column 7

COMMON

- CM-0 Variable Previously Placed in Common
- CM-1 Name in Common List Previously Used as Other Than Variable
- CM-2 Subprogramme Parameter Appears in Common Statement
- CM-3 Initializing of Common Should be done in a Block Data Subprogramme
- CM-4 Illegal Use of Common Block or Namelist Name

FORTRAN TYPE CONSTANTS

- CN-0 Mixed Real*4,Real*8 in Complex Constant
- CN-1 Integer Constant Greater Than 2,147,483,647 (2**31-1)
- CN-3 Exponent on Real Constant Greater Than 99
- CN-4 Real Constant has more than 16 Digits, Truncated to 16
- CN-5 Invalid Hexadecimal Constant
- CN-6 Illegal Use of Decimal Point
- CN-8 Constant with E-Type Exponent has More Than 7 Digits, Assume D-Type
- CN-9 Constant or Statement Number Greater Than 99999

COMPILER ERRORS

- CP-0 Detected in Phase Reloc
- CP-1 Detected in Phase Linkr
- CP-2 Duplicate Pseudo Statement Numbers
- CP-4 Detected in Phase Arith

DATA STATEMENT

- DA-0 Replication Factor Greater Than 32767, Assume 32767
- DA-1 Non Constant in Data Statement
- DA-2 More Variables Than Constants in Data Statement
- DA-3 Attempt to Initialize a Subprogramme Parameter in a Data Statement
- DA-4 Non-Constant Subscripts in a Data Statement Invalid in /360 Fortran
- DA-5 Extended Data Statement Not in /360 Fortran
- DA-6 Non-Agreement Between Type of Variable and Constant in Data Statement
- DA-7 More Constants Than Variables in Data Statement
- DA-8 Variable Previously Initialized. Latest Value Used
Check Common/Equivalenced Variables
- DA-9 Initializing Blank Common Not Allowed in /360 Fortran
- DA-A Invalid Delimiter in Constant List Portion of Data Statement
- DA-B Truncation of Literal Constant Has Occurred

DIMENSION STATEMENTS

- DM-0 No Dimensions Specified For a Variable in a Dimension Statement
- DM-1 Optional Length Specification in Dimension Statement is Illegal
- DM-2 Initialization in Dimension Statement is Illegal
- DM-3 Attempt to Re-Dimension a Variable
- DM-4 Attempt to Dimension an Initialized Variable

DO LOOPS

- DO-0 Illegal Statement Used as Object of DO
- DO-1 Illegal Transfer Into the Range of a Do-Loop
- DO-2 Object of a Do Statement has Already Appeared
- DO-3 Improperly Nested Do-Loops
- DO-4 Attempt to Redefine a Do-Loop Parameter Within Range of Loop
- DO-5 Invalid Do-Loop Parameter
- DO-6 Too Many Nested Do's (Maximum of 20)
- DO-7 Do Parameter Is Undefined or Outside Range
- DO-8 This Do Loop Will Terminate After First Time Through
- DO-9 Attempt to Redefine a Do-Loop Parameter in an Input List

EQUIVALENCE AND/OR COMMON

- EC-0 Two Equivalenced Variables Appear in Common
- EC-1 Common Block Has a Different Length Than a Previous Subprogramme
- EC-2 Common And/Or Equivalence Causes Invalid Alignment. Execution Slowed
Remedy - Put Double Word Quantities First
- EC-3 Equivalence Extends Common Downwards
- EC-7 Common/Equivalence Statement Does Not Precede Previous Use of Variable
- EC-9 A Name Subscripted in an Equivalence Statement Was Not Dimensioned
- EC-8 Variable Used with Non-Constant Subscript in Common/Equivalence List

END STATEMENTS

- EN-0 No End Statement In Programme - End Statement Generated
- EN-1 End Statement Used as Stop Statement At Execution
- EN-2 Improper End Statement
- EN-3 First Statement of Subprogramme Is End Statement

EQUAL SIGNS

- EQ-6 Illegal Quantity on Left of Equals Sign
- EQ-8 Illegal Use of Equal Sign
- EQ-A Multiple Assignment Statements Not In /360 Fortran

EQUIVALENCE STATEMENTS

- EV-0 Attempt To Equivalence A Variable To Itself
- EV-1 Attempt To Equivalence A Subprogramme Parameter
- EV-2 Less Than 2 Members In An Equivalence List
- EV-3 Too Many Equivalence Lists (Max = 255)
- EV-4 Previously Equivalenced Variable Re-Equivalenced Incorrectly

POWERS AND EXPONENTIATION

- EX-0 Illegal Complex Exponentiation
- EX-2 I** J Where I=J=0
- EX-3 I** J Where I=0, J.LT.0
- EX-6 0.0** Y Where Y,LE.0.0
- EX-7 0.0** J Where J=0
- EX-8 C.C** J Where J. LT.0
- EX-9 X** Y Where X.LT.Q.0. Y.NE.0.0

ENTRY STATEMENT

- EY-0 Subprogramme Name In Entry Statement Previously Defined
- EY-1 Previous Definition of Function Name In An Entry Is Incorrect
- EY-2 Use of Subprogramme Parameter Inconsistent With Previous Entry Point
- EY-3 Argument Name Has Appeared In An Executable Statement But Was Not
A Subprogramme Parameter
- EY-4 Entry Statement Not Permitted In Main Programme
- EY-5 Entry Point Invalid Inside a Do-Loop
- EY-6 Variable Was Not Previously Used As A Parameter = Parameter Assumed

FORMAT

SOME FORMAT ERROR MESSAGES GIVE CHARACTERS IN WHICH ERROR WAS DETECTED

- FM-0 Invalid Character In Input Data
- FM-2 No Statement Number On A Format Statement
- FM-5 Format Specification And Data Type Do Not Match
- FM-6 Incorrect Sequence of Characters In Input Data

- FT-0 First Character Of Variable Format Not a Left Bracket
- FT-1 Invalid Character Encountered In Format
- FT-2 Invalid Form Following a Specification
- FT-3 Invalid Field Or Group Count
- FT-4 A Field or Group Count Greater Than 255
- FT-5 No Closing Bracket On Variable Format
- FT-6 No Closing Quote In a Hollerith Field
- FT-7 Invalid Use of Comma
- FT-8 Insufficient Space to Compile A Format Statement (Scan-Stack Overflow)
- FT-9 Invalid Use of P Specification
- FT-A Character Follows Closing Right Bracket
- FT-B Invalid Use of Period

- FT-C More Than Three Levels of Parenthesis
- FT-D Invalid Character Before a Right Bracket
- FT-E Missing of Zero Length Hollerith Encountered
- FT-F No Closing Right Bracket

FUNCTIONS AND SUBROUTINE

- FN-0 No Arguments in a Function Statement
- FN-3 Repeated Argument in Subprogram or Statement Function Definition
- FN-4 Subscripts On Right Hand Side of Statement Function
Probable Cause - Variable To Left Of = Not Dimensioned
- FN-5 Multiple Returns Are Invalid In Function Subprogrammes
- FN-6 Illegal Length Modifier In Type Function Statement
- FN-7 Invalid Argument in Arithmetic or Logical Statement Function
- FN-8 Argument of Subprogramme is Same as Subprogramme Name

GO TO STATEMENTS

- GO-0 Statement Transfers To Itself or a Non-Executable Statement
- GO-1 Invalid Transfer To This Statement
- GO-2 Index of Computed 'Go To' Is Negative or Undefined
- GO-3 Error In Variable Of 'Go To' Statement
- GO-4 Index of Assigned 'Go To' is Undefined or Not In Range

HOLLERITH CONSTANTS

- HO-0 Zero Length Specified For H-Type Hollerith
- HO-1 Zero Length Quote-Type Hollerith
- HO-2 No Closing Quote or Next Card Not Continuation Card
- HO-3 Hollerith Constant Should Appear Only In Call Statement
- HO-4 Unexpected Hollerith or Statement Number Constant

IF STATEMENTS (ARITHMETIC AND LOGICAL)

- IF-0 Statement Invalid After a Logical If.
- IF-3 Arithmetic Or Invalid Expression In Logical If
- IF-4 Logical, Complex, or Invalid Expression in Arithmetic If

IMPLICIT STATEMENT

- IM-0 Invalid Mode Specified in an Implicit Statement
- IM-1 Invalid Length Specified in an Implicit or Type Statement
- IM-2 Illegal Appearance of \$ in a Character Range
- IM-3 Improper Alphabetic Sequence in Character Range
- IM-4 Specification Must be Single Alphabetic Character, 1st Character Used
- IM-5 Implicit Statement Does Not Precede Other Specification Statements
- IM-6 Attempt to Establish the Type of a Character More Than Once
- IM-7 /360 Fortran Allows One Implicit Statement Per Programme
- IM-8 Invalid Element in Implicit Statement
- IM-9 Invalid Delimiter in Implicit Statement

INPUT/OUTPUT

IO-0 Missing Comma In I/O List of I/O or Data Statement
IO-2 Statement Number in I/O Statement Not A Format Statement Number
IO-3 Buffer Overflow - Line Too Long For Device
IO-6 Variable Format Not An Array Name
IO-8 Invalid Element in Input List or Data List
IO-9 Type of Variable Unit not Integer in I/O Statements
IO-A Half-Word Integer Variable Used as Unit in I/O Statements
IO-B Assigned Integer Variable used as Unit in I/O Statements
IO-C Invalid Element in an Output List
IO-D Missing or Invalid Unit in I/O Statement
IO-E Missing or Invalid Format in Read/Write Statement
IO-F Invalid Delimiter in Specification Part of I/O Statement
IO-G Missing Statement Number After END= OR EKR=
IO-H /360 Fortran Doesn't Allow End/Err Returns in Write Statements
IO-J Invalid Delimiter in I/O List
IO-K Invalid Delimiter in Stop, Pause, Data or Tape Control Statement

JOB CONTROL CARDS

JB-1 Job Card Encountered During Compilation
JB-2 Invalid Option(s) Specified on Job Card
JB-3 Unexpected Control Card Encountered During Compilation

JOB TERMINATION

KO-0 Job Terminated in Execution Because of Compile Time Error
KO-1 Fixed Point Division by Zero
KO-2 Floating-Point Division by Zero
KO-3 Too Many Exponent Overflows
KO-4 Too Many Exponent Underflows
KO-5 Too Many Fixed Point Overflows
KO-6 Job Time Exceeded
KO-7 Compiler Error - Interruption at Execution Time, Return to System

LOGICAL OPERATIONS

LG-2 Not Used as a Binary Operator

LIBRARY ROUTINES

LI-0 Argument Out of Range Dgamma or Gamma. (1.382E-76 .LT. X .LT. 57.57)
LI-1 Absolute Value of argument .GT. 174,673, SINH,COSH,DSINH,DCOSH
LI-2 Sense Light Other than 0,1,2,3,4 for Slite or 1,2,3,4 for Slite
LI-3 Real Portion of Argument .GT. 174,673, CEXP or CDEXP
LI-4 ABS(AIMAG(Z)) .GT. 174,673 for CSIN, CCOS, CDSIN or CDCOS of Z
LI-5 ABS(REAL(Z)). GB. 3.537E15 for CSIN,CCOS,CDSIN or CDCOS of Z
LI-6 ABS(AIMAG(Z)) .GE. 3.537E15 for CEXP or CDEXP of Z;
LI-7 Argument .GT. 174,673, EXP or DEXP
LI-8 Argument is Zero, CLOG, CLOG10, CDLOG or CDLOG10

- LI-9 Argument is Negative or Zero, ALOG, ALOG10, DLOG or DLOG10
- LI-A ABS(X) .GE. 3.537E15 for SIN, COS, DSIN or DCOS of X
- LI-B Absolute Value of Argument .GT. 1, for ARSIN, ARCOS, DARSIN or DARCOS
- LI-C Argument is Negative, SORT or DSORT
- LI-D Both Arguments of DATAN2 or ATAN2 are Zero
- LI-F Argument Too Close to a Singularity, TAN, COTAN, DTAN or DCOTAN
- LI-F Argument Out of Range DLGAMMA or ALGAMA. (0.0 .LT. X .LT. 4.29E73)
- LI-G Absolute Value of Argument .GE. 3.537E15, TAN, COTAN, DTAN, DCOTAN
- LI-H Fewer Than Two Arguments for one of NINO, MIN1, AMINO, etc.

MIXED MODE

- MD-2 Relational Operator has a Logical Operand
- MD-3 Relational Operator has a Complex Operand
- MD-4 Mixed Mode - Logical With Arithmetics
- MD-6 Warning - Subscript is Complex

MEMORY OVERFLOW

- MO-0 Symbol Table Overflows Object Code. Source Error Checking Continues
- MO-1 Insufficient Memory to Assign Array Storage. Job Abandoned
- MO-2 Symbol Table Overflows Compiler, Job Abandoned
- MO-3 Data Area of Subprogramme too large -- Segment Subprogramme

PARENTHESIS

- PC-0 Unmatched Parenthesis
- PC-1 Invalid Bracket Nesting in I/O List

PAUSE, STOP STATEMENTS

- PS-0 Stop with Operator Message not Allowed. Simple Stop Assumed
- PS-1 Pause with Operator Message not Allowed. Treated as Continue

RETURN STATEMENT

- RE-0 First Card of Subprogram is a Return Statement
- RE-1 Return I, Where I is Zero, Negative or too Large
- RE-2 Multiple Return not Valid in Function Subprogramme
- RE-3 Variable in Multiple Return is not a Simple Integer Variable
- RE-4 Multiple Return not Valid in Main Programme

ARITHMETIC AND LOGICAL STATEMENT FUNCTIONS:

PROBABLE CAUSE OF SF ERRORS - VARIABLE ON LEFT OF = WAS NOT DIMENSIONED

- SF-1 Previously Referenced Statement Number on Statement Function
- SF-2 Statement Function is the Object of a Logical If Statement
- SF-3 Recursive Statement Function, Name Appears on Both Sides of =

SUBPROGRAMMES

- SR-0 Missing Subprogramme
- SR-2 Subprogramme Assigned Different Modes in Different Programme Segments
- SR-4 Invalid Type of Argument in Subprogramme Reference
- SR-5 Subprogram Attempts to Redefine a Constant, Temporary or do Parameter
- SR-6 Attempt to Use Subprogramme Recursively

SR-7 Wrong Number of Arguments in Subprogramme Reference
SR-8 Subprogramme Name Previously Defined -- First Reference Used
SR-9 No Main Program
SR-A Illegal or Blank Subprogramme Name

SUBSCRIPTS

SS-0 Zero Subscript or Dimension Not Allowed
SS-1 Subscript Out of Range
SS-2 Invalid Variable or Name Used for Dimension

STATEMENTS AND STATEMENT NUMBERS

ST-0 Missing Statement Number
ST-1 Statement Number Greater Than 99999
ST-3 Multiply Defined Statement Number
ST-4 No Statement Number on Statement Following Transfer Statement
ST-5 Undercodeable Statement
ST-7 Statement Number Specified in a Transfer is a Non-Executable Statement
ST-8 Statement Number Constant Must be in a call Statement
ST-9 Statement Specified in a Transfer Statement is a Format Statement
ST-A Missing Format Statement

SUBSCRIPTED VARIABLES

SV-0 Wrong Number of Subscripts
SV-1 Array Name or Subprogramme Name Used Incorrectly Without List
SV-2 More than 7 Dimensions not Allowed
SV-3 Dimension Too Large
SV-4 Variable With Variable Dimensions is not a Subprogramme Parameter
SV-5 Variable Dimension Neither Simple Integer nor S/P Parameter

SYNTAX ERRORS

SX-0 Missing Operator
SX-1 Syntax Error--Searching for Symbol, None Found
SX-2 Syntax Error--Searching for Constant, None Found
SX-3 Syntax Error--Searching for Symbol or Constant, None Found
SX-4 Syntax Error--Searching for Statement Number, None Found
SX-5 Syntax Error Searching for Simple Integer Variable, None Found
SX-C Illegal Sequence of Operators in Expression
SX-D Missing Operand or Operator

I/O OPERATIONS

UN-0 Control Card Encountered on Unit 5 during Execution Probable
Cause - Missing Data or Improper Format Statements
UN-1 End of File Encountered
UN-2 I/O Error
UN-3 Data Set Referenced for Which No DD Card Supplied
UN-4 Rewind, Endfile, Backspace References Unit 5,6,7
UN-5 Attempt to Read on Unit 5 after it has had end-of-file
UN-6 Unit Number is Negative, Zero, or Greater than 7
UN-7 Too many Pages
UN-8 Attempt to do Sequential I/O on a direct Access File
UN-9 Write References 5 or Read References 6,7

UNDEFINED VARIABLES

- UV-0 Undefined Variable - Simple Variable
- UV-1 Undefined Variable - Equivalenced, Commoned, Or Dummy Parameter
- UV-2 Undefined Variable - Array Member
- UV-3 Undefined Variable - Array Name which was used as a Dummy Parameter
- UV-4 Undefined Variable - Subprogramme Name used as Dummy Parameter
- UV-5 Undefined Variable - Argument of the Library Subprogramme Named
- UV-6 Variable Format Contains Undefined Character(s)

VARIABLE NAMES

- VA-0 Attempt to Redefine Type of a Variable Name
- VA-1 Subroutine Name or Common Block Name used Incorrectly
- VA-2 Variable Name Longer than Six Characters. Truncated to Six
- VA-3 Attempt to Redefine the Mode of a Variable Name
- VA-4 Attempt to Redefine the Type of a Variable Name
- VA-6 Illegal Use of a Subroutine Name
- VA-8 Attempt to use a previously defined Name as Function or Array
- VA-9 Attempt to Use a previously defined Name as Statement Function
- VA-A Attempt to use a previously defined Name as Subprogramme Name
- VA-B Name used as a Common Block Previously Used as a Subprogramme Name
- VA-C Name used as a Subprogramme previously Used as a Common Block Name

EXTERNAL STATEMENT

- XT-0 Invalid Element in External List
- XT-1 Invalid Delimiter in External Statement
- XT-2 Subprogramme Previously Externalled





CENTRO LATINOAMERICANO DE DEMOGRAFIA
CELADE: J.M. Infante 9. Casilla 91. Teléfono 257806
Santiago (Chile)

CELADE: Ciudad Universitaria Rodrigo Facio
Apartado Postal 5249
San José (Costa Rica)