

E/CEPAL/L.115/12  
May 1975

Economic Commission for Latin America    International Bank for  
Reconstruction and Development  
Development Research Centre

PROJECT ON THE MEASUREMENT AND ANALYSIS OF THE DISTRIBUTION  
OF INCOME IN LATIN AMERICAN COUNTRIES

WORKING TABLES

ESTIMATES OF THE FUNCTIONAL DISTRIBUTION OF INCOME GENERATED  
BY SECTORS OF ECONOMIC ACTIVITY  
1960-1972



## I. INTRODUCTION

Macroeconomic estimates of income generated in each sector, and the distribution and appropriation of such income are indispensable to the analysis of income distribution in Latin American countries, which is the objective of the Project. National accounts in the countries of the region have developed to the extent that the annual estimates of value added in each sector are now part of current statistics. However, this is not the case where estimates of primary components of sectoral value added are concerned. Only a few countries prepare annual estimates of each of the components of sectoral income at factor cost: wages and salaries, employers' social security contributions, depreciation and net operating surplus. The majority only prepare annual estimates of paid remuneration, or wages and salaries. Some countries no longer even prepare such estimates since the last review of their national accounts.

Because of this lack of uniformity it was necessary to systematize official estimates on the functional distribution of income generated in each sector, to revise their consistency, and to fill the existing gaps with their own estimates, in so far as this practice was both feasible and sound.

This paper contains series on the changes taking place since 1960 in the components of gross sectoral value added at factor cost for ten countries, including the principal ones of the region. In all cases the possibilities of using available official estimates collected by the National Accounts Section of ECLA were exhausted. The need to use the latest revised estimates entailed, in some countries, the disadvantage of not being able to include estimates for the years prior to those revised, for want of comparability.

In all cases, and for each year, official estimates of sectoral value added at current prices were used. For some countries it became necessary, however, to estimate indirect taxes and subsidies in order to obtain the gross sectoral value added at factor cost. In those cases for which estimates of the remuneration of salaried employees

/were indispensable

were indispensable, recourse was had to estimates of sectoral employment and information on average salaries. Finding the net operating surplus generated in each sector required, in most cases, the distribution by sector of employers' social security contributions and the provision for the depreciation of fixed assets.

The sectoral estimates of each country were also brought into line - using the available breakdown of information - so that they would correspond as far as possible to the SIIC/Rev.1.

The purpose of the foregoing explanations is to give, to some extent, an accurate picture of the degree of approximation of the series contained in this paper. They have been systematized in order to support the analysis of income distribution, provided that due account is taken of their limitations. To facilitate this, a detailed list of the sources and procedures used in each case are provided in Part III.

II. STATISTICAL SERIES



ARGENTINA





Table 1

## ARGENTINA: GROSS VALUE ADDED AT FACTOR COST BY KIND OF ECONOMIC ACTIVITY

(Thousands of millions of pesos)<sup>a/</sup>

Kind of economic activity	1960	1961	1962	1963	1964	1965	1966	1967	1968	1969	1970	1971	1972
Agriculture, forestry, hunting and fishing	153.7	147.5	200.7	204.3	440.5	530.5	576.4	722.3	782.1	898.3	1 058.2	1 531.1	2 861.3
Mining and quarrying	10.3	15.9	24.7	32.1	34.9	50.6	70.2	84.2	100.9	111.7	139.7	204.7	357.7
Manufacturing	287.8	346.6	423.6	515.0	757.9	1 141.0	1 369.5	1 687.6	1 907.9	2 228.5	2 648.7	3 848.6	7 048.1
Construction	37.0	47.5	56.2	65.2	83.7	120.2	166.9	241.1	305.5	359.7	457.9	599.8	988.8
Electricity, gas, water and sanitary services	11.5	16.5	23.2	32.7	39.3	61.1	89.3	132.2	161.5	167.6	220.8	306.0	462.9
Transport, storage and communication	73.0	88.0	110.5	150.4	197.7	265.0	369.1	480.5	585.2	667.8	784.9	1 025.1	1 746.2
Commerce, financial institutions and real estate	195.0	226.1	267.9	314.9	429.2	587.7	698.2	900.3	1 072.0	1 311.1	1 541.9	2 241.1	3 764.4
Dwellings	16.5	20.2	27.0	31.5	40.2	51.8	62.9	81.7	105.0	137.9	161.4	226.3	380.1
Public administration, defense and other services	146.2	178.2	240.6	291.2	389.9	555.2	759.7	982.3	1 127.4	1 264.6	1 434.4	1 989.6	3 429.5
<b>Total</b>	<b>924.9</b>	<b>1 086.5</b>	<b>1 374.4</b>	<b>1 717.2</b>	<b>2 412.8</b>	<b>3 363.0</b>	<b>4 162.3</b>	<b>5 312.3</b>	<b>6 153.0</b>	<b>7 147.2</b>	<b>8 447.9</b>	<b>11 972.3</b>	<b>21 039.0</b>

<sup>a/</sup> Expressed in old pesos (prior to the adoption of law 18 188).

Table 2

## ARGENTINA: COMPENSATION OF EMPLOYEES BY KIND OF ECONOMIC ACTIVITY

(Thousands of millions of pesos) <sup>a/</sup>

Kind of economic activity	1960	1961	1962	1963	1964	1965	1966	1967	1968	1969	1970	1971	1972
Agriculture, forestry, hunting and fishing	33.4	36.9	48.8	60.3	90.0	132.3	159.4	203.8	232.3	268.5	342.9	492.9	638.1
Mining and quarrying	3.7	5.1	6.9	9.0	10.8	20.6	29.3	35.8	39.8	42.6	58.9	74.4	107.7
Manufacturing	102.3	129.5	146.8	173.2	261.5	388.9	518.4	711.6	777.3	885.6	1 168.1	1 477.9	2 304.7
Construction	24.7	32.6	38.3	48.9	64.8	95.9	130.9	193.9	244.3	282.9	393.9	485.7	777.2
Electricity, gas, water and sanitary services	7.2	8.9	12.5	17.2	24.7	34.6	46.6	63.6	68.1	78.3	116.8	161.8	182.4
Transport, storage and communication	45.7	52.4	61.0	80.7	103.6	151.4	208.2	263.9	300.6	335.2	407.4	589.4	853.9
Commerce, financial institutions and real estate	50.2	65.5	78.7	100.5	136.4	186.1	236.8	317.1	366.3	408.7	468.6	604.3	1 054.0
Dwellings	0.9	1.2	1.6	2.2	2.9	3.9	5.2	6.9	7.9	9.3	11.5	13.6	16.1
Public administration, defense and other services	83.6	111.6	152.0	176.9	243.1	354.3	486.0	622.1	695.7	782.8	917.7	1 344.1	2 628.8
<b>Total</b>	<b>351.2</b>	<b>443.7</b>	<b>546.6</b>	<b>668.9</b>	<b>937.8</b>	<b>1 368.0</b>	<b>1 820.8</b>	<b>2 418.7</b>	<b>2 732.3</b>	<b>3 093.9</b>	<b>3 885.8</b>	<b>5 244.1</b>	<b>8 562.9</b>

<sup>a/</sup> Expressed in old pesos (prior to the adoption of law 18 188).

Table 3

## ARGENTINA: WAGES AND SALARIES BY KIND OF ECONOMIC ACTIVITY

(Thousands of millions of pesos)<sup>a/</sup>

Kind of economic activity	1960	1961	1962	1963	1964	1965	1966	1967	1968	1969	1970	1971	1972
Agriculture, forestry, hunting and fishing	33.0	36.5	48.4	59.6	88.7	131.2	157.9	200.4	228.2	264.2	337.7	486.1	623.8
Mining and quarrying	3.3	4.6	6.2	8.1	9.9	18.9	26.8	32.8	36.4	36.9	52.0	65.2	90.9
Manufacturing	95.8	122.4	140.3	164.6	248.4	366.5	491.6	661.7	709.0	813.1	1 081.6	1 362.6	2 093.3
Construction	23.2	30.7	36.6	46.8	61.5	90.6	124.9	183.4	230.0	267.8	375.9	461.7	738.6
Electricity, gas, water and sanitary services	6.5	7.9	11.0	15.2	21.9	30.4	40.5	55.1	61.0	67.6	104.0	144.7	157.4
Transport, storage and communication	41.0	48.3	56.7	75.6	96.5	141.9	195.3	240.0	276.2	307.9	374.9	546.0	791.0
Commerce, financial institutions and real estate	46.1	60.4	72.9	92.7	116.2	169.5	216.7	289.4	327.7	367.0	419.3	538.4	943.3
Dwellings	0.9	1.2	1.6	2.2	2.9	3.9	5.2	6.9	7.9	9.3	11.5	13.6	16.1
Public administration, defense and other services	76.9	102.7	140.4	163.2	225.5	328.3	449.3	573.4	638.9	719.1	841.7	1 242.6	2 477.3
<b>Total</b>	<b>326.7</b>	<b>414.7</b>	<b>514.1</b>	<b>628.0</b>	<b>861.5</b>	<b>1 281.2</b>	<b>1 708.2</b>	<b>2 243.1</b>	<b>2 535.3</b>	<b>2 853.0</b>	<b>3 598.6</b>	<b>4 860.9</b>	<b>7 931.7</b>

<sup>a/</sup> Expressed in old pesos (prior to the adoption of law 18 188).

Table 4

## ARGENTINA: EMPLOYERS' SOCIAL SECURITY CONTRIBUTIONS BY KIND OF ECONOMIC ACTIVITY

(Thousands of millions of pesos)<sup>a/</sup>

Kind of economic activity	1960	1961	1962	1963	1964	1965	1966	1967	1968	1969	1970	1971	1972
Agriculture, forestry, hunting and fishing	0.4	0.4	0.4	0.7	1.3	1.1	1.5	3.4	4.1	4.4	5.2	6.8	14.3
Mining and quarrying	0.3	0.5	0.7	0.9	0.9	1.7	2.5	3.0	3.4	5.8	6.9	9.2	16.8
Manufacturing	6.5	7.1	6.5	8.5	13.1	22.4	26.9	49.9	68.3	72.5	86.5	115.3	211.4
Construction	1.5	1.9	1.7	2.1	3.2	5.3	6.1	10.5	14.4	15.1	18.0	24.0	38.6
Electricity, gas, water and sanitary services	0.7	1.0	1.5	2.0	2.7	4.2	6.1	8.5	7.0	10.7	12.8	17.1	25.0
Transport, storage and communication	4.6	4.1	4.3	5.1	7.1	10.0	12.9	19.9	24.4	27.3	32.5	43.4	62.9
Commerce, financial institutions and real estate	4.3	5.1	5.9	8.0	10.4	16.1	19.9	31.7	38.6	41.4	49.3	65.9	110.7
Dwellings	-	-	-	-	-	-	-	-	-	-	-	-	-
Public administration, defense and other services	6.7	8.9	11.5	13.6	17.6	26.0	36.7	48.7	56.8	63.7	76.0	101.5	151.5
<b>Total</b>	<b>25.0</b>	<b>29.0</b>	<b>32.5</b>	<b>40.9</b>	<b>56.3</b>	<b>86.8</b>	<b>112.6</b>	<b>175.6</b>	<b>217.0</b>	<b>240.9</b>	<b>287.2</b>	<b>383.2</b>	<b>631.2</b>

<sup>a/</sup> Expressed in old pesos (prior to the adoption of law 18 188).

1010

Table 5

## ARGENTINA: GROSS OPERATING SURPLUS BY KIND OF ECONOMIC ACTIVITY

(Thousands of millions of pesos)<sup>a/</sup>

Kind of economic activity	1960	1961	1962	1963	1964	1965	1966	1967	1968	1969	1970	1971	1972
Agriculture, forestry, hunting and fishing	120.3	110.6	151.9	224.0	350.5	398.2	417.0	518.5	549.8	629.8	715.3	1 038.2	2 223.2
Mining and quarrying	6.6	10.8	17.8	23.1	24.1	29.9	40.9	48.5	61.1	69.1	80.8	130.3	250.0
Manufacturing	185.5	217.1	276.8	341.8	495.8	752.1	851.1	976.0	1 130.6	1 342.9	1 480.6	2 370.7	4 743.4
Construction	12.3	15.0	17.9	16.3	19.0	24.4	36.0	47.2	61.2	76.8	64.0	114.1	211.6
Electricity, gas, water and sanitary services	4.3	7.6	10.8	15.5	24.7	26.6	42.7	68.6	93.4	89.3	104.0	144.2	280.5
Transport, storage and communication	27.3	35.6	49.4	69.7	94.0	113.6	161.0	216.6	284.6	332.6	377.5	435.7	892.3
Commerce, financial institutions and real estate	144.8	160.6	189.2	214.4	292.8	401.6	461.4	583.2	705.7	902.4	1 073.3	1 636.8	2 710.4
Dwellings	15.5	18.9	25.3	29.2	37.3	47.7	57.7	74.8	102.6	128.6	149.9	212.7	364.0
Public administration, defense and other services	56.6	66.6	88.7	114.3	146.8	200.9	273.7	360.2	431.7	481.8	516.7	645.5	800.7
<b>Total</b>	<b>573.2</b>	<b>642.8</b>	<b>827.8</b>	<b>1 048.3</b>	<b>1 475.0</b>	<b>1 925.0</b>	<b>2 341.5</b>	<b>2 893.6</b>	<b>3 420.7</b>	<b>4 053.3</b>	<b>4 562.1</b>	<b>6 728.2</b>	<b>12 476.1</b>

<sup>a/</sup> Expressed in old pesos (prior to the adoption of law 18 188).

Table 6

## ARGENTINA: DEPRECIATION BY KIND OF ECONOMIC ACTIVITY

(Thousands of millions of pesos)<sup>a/</sup>

Kind of economic activity	1960	1961	1962	1963	1964	1965	1966	1967	1968	1969	1970	1971	1972
Agriculture, forestry, hunting and fishing	4.0	5.3	8.2	12.7	18.0	20.3	24.4	32.1	38.9	48.0	59.7	72.6	119.4
Mining and quarrying	0.9	1.9	3.4	4.8	4.9	6.7	10.0	12.7	17.1	20.4	27.0	33.0	50.3
Manufacturing	8.3	13.8	19.8	26.3	35.0	49.8	65.6	85.0	108.0	135.4	169.6	207.3	366.3
Construction	0.6	1.0	1.4	1.7	2.1	2.7	4.2	6.4	8.9	11.4	15.2	16.8	24.4
Electricity, gas, water, and sanitary services	0.7	1.5	2.4	3.7	4.2	6.1	9.7	15.0	20.6	23.0	32.0	37.3	46.1
Transport, storage and communication	4.3	7.2	10.5	15.4	18.5	23.4	35.7	48.8	66.9	81.9	101.6	111.5	165.9
Commerce, financial institutions and real estate	3.0	4.9	6.8	8.7	10.8	13.8	18.1	24.4	32.7	43.0	53.3	65.2	97.6
Dwellings	1.7	2.9	4.5	5.7	6.7	8.1	10.8	14.8	21.4	30.1	37.3	43.9	65.7
Public administration, defense and other services	0.8	1.4	2.2	2.9	3.7	4.8	7.3	9.7	12.7	15.4	18.5	21.5	32.1
<b>Total</b>	<b>24.3</b>	<b>39.9</b>	<b>59.2</b>	<b>81.9</b>	<b>103.9</b>	<b>135.7</b>	<b>185.8</b>	<b>248.9</b>	<b>327.2</b>	<b>408.6</b>	<b>514.2</b>	<b>609.1</b>	<b>967.8</b>

<sup>a/</sup> Expressed in old pesos (prior to the adoption of law 18 188).

Table 7

## ARGENTINA: NET OPERATING SURPLUS BY KIND OF ECONOMIC ACTIVITY

(Thousands of millions of pesos)<sup>a/</sup>

Kind of economic activity	1960	1961	1962	1963	1964	1965	1966	1967	1968	1969	1970	1971	1972
Agriculture, forestry, hunting and fishing	116.3	105.3	143.7	211.3	332.5	377.9	392.6	486.4	510.9	581.8	655.6	965.6	2 103.8
Mining and quarrying	5.7	8.9	14.4	18.3	19.2	23.2	30.9	35.8	44.0	48.7	53.8	97.3	199.7
Manufacturing	177.2	203.3	257.0	315.5	460.8	702.3	785.5	891.0	1 022.6	1 207.5	1 311.0	2 163.4	4 377.1
Construction	11.7	14.0	16.5	14.6	16.9	21.7	31.8	40.8	52.3	65.4	48.8	97.3	187.2
Electricity, gas, water and sanitary services	3.6	6.1	8.4	11.8	10.5	20.5	33.0	53.6	72.8	66.3	72.0	106.9	234.4
Transport, storage and communication	23.0	28.4	38.9	54.3	75.5	90.2	125.3	167.8	217.7	250.7	275.9	324.2	726.4
Commerce, financial institutions and real estate	141.8	155.7	182.4	205.7	282.0	387.8	443.3	558.8	673.0	859.4	1 020.0	1 571.6	2 612.8
Dwellings	13.8	16.0	20.8	23.5	30.6	39.6	46.9	60.0	81.2	98.5	112.6	168.8	298.3
Public administration, defense and other services	55.8	65.2	86.5	111.4	143.1	196.1	266.4	350.5	419.0	466.4	498.2	624.0	768.6
<b>Total</b>	<b>548.9</b>	<b>602.9</b>	<b>768.6</b>	<b>966.4</b>	<b>1 371.1</b>	<b>1 859.3</b>	<b>2 155.7</b>	<b>2 644.7</b>	<b>3 093.5</b>	<b>3 644.7</b>	<b>4 047.9</b>	<b>6 119.1</b>	<b>11 508.3</b>

<sup>a/</sup> Expressed in old pesos (prior to the adoption of law 18 188).





**BRAZIL**



Table 1  
BRAZIL: GROSS VALUE ADDED AT FACTOR COST BY  
KIND OF ECONOMIC ACTIVITY

(Millions of cruzeiros)

Kind of economic activity	1959	1960	1970	1971	1972
Agriculture, forestry, hunting and fishing	350	484	25 082	35 697	45 292
Mining and quarrying	...	...	...	...	...
Manufacturing <sup>a/</sup>	560	779	59 319	77 546	102 822
Construction	...	...	...	...	...
Electricity, gas, water and sanitary services	...	...	...	...	...
Transport, storage and communication	131	173	10 313	13 940	18 439
Commerce, financial institutions and real estate	328	459	38 232	52 712	69 148
Dwellings	147	168	14 969	19 109	24 761
Public administration defense and other services	284	414	27 611	36 323	46 526
<u>Total</u>	<u>1 800</u>	<u>2 477</u>	<u>375 526</u>	<u>274 777</u>	<u>306 988</u>

Note: For the years from 1959 to 1970 inclusive no revised official information is available.

<sup>a/</sup> Includes: Mining and quarrying, construction, electricity, gas and water.

Table 2  
 BRAZIL: COMPENSATION OF EMPLOYEES BY KIND  
 OF ECONOMIC ACTIVITY

(Millions of cruzeiros)

Kind of economic activity	1970	1971	1972
Agriculture, forestry, hunting and fishing	10 231	12 668	15 488
Mining and quarrying	...	...	...
Manufacturing <sup>a/</sup>	20 717	25 746	34 505
Construction	...	...	...
Electricity, gas, water and sanitary services	...	...	...
Transport, storage and communication	5 141	6 209	7 870
Commerce, financial institutions and real estate <sup>b/</sup>	40 364	49 637	65 619
Dwellings	-	-	-
Public administration, defense and other services	...	...	...
<b>Total</b>	<b>76 453</b>	<b>94 260</b>	<b>123 474</b>

<sup>a/</sup> Includes: Mining and quarrying, construction, electricity, gas and water.

<sup>b/</sup> Includes: Other services.

Table 3  
 BRAZIL: WAGES AND SALARIES BY KIND OF ECONOMIC ACTIVITY  
 (Millions of cruzeiros)

Kind of economic activity	1970	1971	1972
Agriculture, forestry, hunting and fishing	10 133	12 547	15 338
Mining and quarrying	...	...	...
Manufacturing a/	19 666	24 437	32 753
Construction	...	...	...
Electricity, gas, water and sanitary services	...	...	...
Transport, storage and communication	4 827	5 862	7 422
Commerce, financial institutions and real estate b/	38 162	46 929	62 034
Dwellings	-	-	-
Public administration, defense and other services	...	...	...
<b>Total</b>	<b>72 788</b>	<b>89 775</b>	<b>117 547</b>

a/ Includes: Mining and quarrying, construction, electricity, gas and water.

b/ Includes: Other services.

Table 4

BRAZIL: EMPLOYERS' SOCIAL SECURITY CONTRIBUTIONS  
BY KIND OF ECONOMIC ACTIVITY

(Millions of cruzeiros)

Kind of economic activity	1970	1971	1972
Agriculture, forestry, hunting and fishing	98	121	148
Mining and quarrying	...	...	...
Manufacturing a/	1 051	1 309	1 752
Construction	...	...	...
Electricity, gas, water and sanitary services	...	...	...
Transport, storage and communication	314	347	448
Commerce, financial institutions and real estate b/	2 202	2 708	3 579
Dwellings	-	-	-
Public administration, defense and other services	...	...	...
<b>Total</b>	<b>3 665</b>	<b>4 485</b>	<b>5 927</b>

a/ Includes: Mining and quarrying, construction, electricity, gas and water.

b/ Includes: Other services.

Table 5  
BRAZIL: GROSS OPERATING SURPLUS BY KIND OF ECONOMIC ACTIVITY

(Millions of cruzeiros)

Kind of economic activity	1970	1971	1972
Agriculture, forestry, hunting and fishing	14 851	23 029	29 806
Mining and quarrying	...	...	...
Manufacturing <sup>a/</sup>	38 602	51 800	68 317
Construction	...	...	...
Electricity, gas, water and sanitary services	...	...	...
Transport, storage and communication	5 172	7 131	10 569
Commerce, financial institutions and real estate <sup>b/</sup>	25 479	39 398	50 061
Dwellings	14 969	19 109	24 761
Public administration, defense and other services	...	...	...
<u>Total</u>	<u>99 073</u>	<u>140 467</u>	<u>183 514</u>

<sup>a/</sup> Includes: Mining and quarrying, construction, electricity, gas and water.

<sup>b/</sup> Includes: Other services.

Table 6

BRAZIL: DEPRECIATION BY KIND OF ECONOMIC ACTIVITY

(Millions of cruzeiros)

Kind of economic activity	1959	1960	1970	1971	1972
Agriculture, forestry, hunting and fishing	7	10	904	1 296	1 628
Mining and quarrying	...	...	...	...	...
Manufacturing <sup>a/</sup>	50	73	5 215	6 882	9 038
Construction	...	...	...	...	...
Electricity, gas, water and sanitary services	...	...	...	...	...
Transport, storage and communication	18	24	1 441	1 875	2 570
Commerce, financial institutions and real estate	9	13	886	1 230	1 597
Dwellings	15	17	1 533	1 969	2 528
Public administration, defense and other services	4	6	251	331	420
<u>Total</u>	<u>103</u>	<u>143</u>	<u>10 290</u>	<u>13 583</u>	<u>17 781</u>

<sup>a/</sup> Includes: Mining and quarrying, construction, electricity, gas and water.



Table 7

BRAZIL: NET OPERATING SURPLUS BY KIND OF ECONOMIC ACTIVITY

(Millions of cruzeiros)

Kind of economic activity	1970	1971	1972
Agriculture, forestry, hunting and fishing	13 947	21 733	28 178
Mining and quarrying	...	...	...
Manufacturing <sup>a/</sup>	33 387	44 918	59 279
Construction	...	...	...
Electricity, gas, water and sanitary services	...	...	...
Transport, storage and communication	3 731	5 256	7 999
Commerce, financial institutions and real estate <sup>b/</sup>	24 342	37 837	48 044
Dwellings	13 436	17 140	22 233
Public administration, defense and other services	...	...	...
<u>Total</u>	<u>88 843</u>	<u>126 884</u>	<u>165 733</u>

<sup>a/</sup> Includes: Mining and quarrying, construction, electricity, gas and water.

<sup>b/</sup> Includes: Other services.

REPORT ON THE PROGRESS OF THE WORK

1911

The following table shows the results of the work done during the year 1911.

Year	Number of specimens	Number of species
1910	1,234	156
1911	1,567	189
1912	1,890	212
1913	2,123	245
1914	2,456	278
1915	2,789	311
1916	3,123	344
1917	3,456	377
1918	3,789	410
1919	4,123	443
1920	4,456	476
1921	4,789	509
1922	5,123	542
1923	5,456	575
1924	5,789	608
1925	6,123	641
1926	6,456	674
1927	6,789	707
1928	7,123	740
1929	7,456	773
1930	7,789	806
1931	8,123	839
1932	8,456	872
1933	8,789	905
1934	9,123	938
1935	9,456	971
1936	9,789	1,004
1937	10,123	1,037
1938	10,456	1,070
1939	10,789	1,103
1940	11,123	1,136
1941	11,456	1,169
1942	11,789	1,202
1943	12,123	1,235
1944	12,456	1,268
1945	12,789	1,301
1946	13,123	1,334
1947	13,456	1,367
1948	13,789	1,400
1949	14,123	1,433
1950	14,456	1,466
1951	14,789	1,499
1952	15,123	1,532
1953	15,456	1,565
1954	15,789	1,598
1955	16,123	1,631
1956	16,456	1,664
1957	16,789	1,697
1958	17,123	1,730
1959	17,456	1,763
1960	17,789	1,796
1961	18,123	1,829
1962	18,456	1,862
1963	18,789	1,895
1964	19,123	1,928
1965	19,456	1,961
1966	19,789	1,994
1967	20,123	2,027
1968	20,456	2,060
1969	20,789	2,093
1970	21,123	2,126
1971	21,456	2,159
1972	21,789	2,192
1973	22,123	2,225
1974	22,456	2,258
1975	22,789	2,291
1976	23,123	2,324
1977	23,456	2,357
1978	23,789	2,390
1979	24,123	2,423
1980	24,456	2,456
1981	24,789	2,489
1982	25,123	2,522
1983	25,456	2,555
1984	25,789	2,588
1985	26,123	2,621
1986	26,456	2,654
1987	26,789	2,687
1988	27,123	2,720
1989	27,456	2,753
1990	27,789	2,786
1991	28,123	2,819
1992	28,456	2,852
1993	28,789	2,885
1994	29,123	2,918
1995	29,456	2,951
1996	29,789	2,984
1997	30,123	3,017
1998	30,456	3,050
1999	30,789	3,083
2000	31,123	3,116
2001	31,456	3,149
2002	31,789	3,182
2003	32,123	3,215
2004	32,456	3,248
2005	32,789	3,281
2006	33,123	3,314
2007	33,456	3,347
2008	33,789	3,380
2009	34,123	3,413
2010	34,456	3,446
2011	34,789	3,479
2012	35,123	3,512
2013	35,456	3,545
2014	35,789	3,578
2015	36,123	3,611
2016	36,456	3,644
2017	36,789	3,677
2018	37,123	3,710
2019	37,456	3,743
2020	37,789	3,776
2021	38,123	3,809
2022	38,456	3,842
2023	38,789	3,875
2024	39,123	3,908
2025	39,456	3,941
2026	39,789	3,974
2027	40,123	4,007
2028	40,456	4,040
2029	40,789	4,073
2030	41,123	4,106
2031	41,456	4,139
2032	41,789	4,172
2033	42,123	4,205
2034	42,456	4,238
2035	42,789	4,271
2036	43,123	4,304
2037	43,456	4,337
2038	43,789	4,370
2039	44,123	4,403
2040	44,456	4,436
2041	44,789	4,469
2042	45,123	4,502
2043	45,456	4,535
2044	45,789	4,568
2045	46,123	4,601
2046	46,456	4,634
2047	46,789	4,667
2048	47,123	4,700
2049	47,456	4,733
2050	47,789	4,766
2051	48,123	4,799
2052	48,456	4,832
2053	48,789	4,865
2054	49,123	4,898
2055	49,456	4,931
2056	49,789	4,964
2057	50,123	4,997
2058	50,456	5,030
2059	50,789	5,063
2060	51,123	5,096
2061	51,456	5,129
2062	51,789	5,162
2063	52,123	5,195
2064	52,456	5,228
2065	52,789	5,261
2066	53,123	5,294
2067	53,456	5,327
2068	53,789	5,360
2069	54,123	5,393
2070	54,456	5,426
2071	54,789	5,459
2072	55,123	5,492
2073	55,456	5,525
2074	55,789	5,558
2075	56,123	5,591
2076	56,456	5,624
2077	56,789	5,657
2078	57,123	5,690
2079	57,456	5,723
2080	57,789	5,756
2081	58,123	5,789
2082	58,456	5,822
2083	58,789	5,855
2084	59,123	5,888
2085	59,456	5,921
2086	59,789	5,954
2087	60,123	5,987
2088	60,456	6,020
2089	60,789	6,053
2090	61,123	6,086
2091	61,456	6,119
2092	61,789	6,152
2093	62,123	6,185
2094	62,456	6,218
2095	62,789	6,251
2096	63,123	6,284
2097	63,456	6,317
2098	63,789	6,350
2099	64,123	6,383
2100	64,456	6,416

The above table shows the results of the work done during the year 1911. It is seen that the number of specimens and the number of species both increased during the year.

COLOMBIA



Table 1

## COLOMBIA: GROSS VALUE ADDED BY KIND OF ECONOMIC ACTIVITY

(Millions of pesos)

Kind of economic activity	1960	1961	1962	1963	1964	1965	1966	1967	1968	1969	1970	1971	1972
Agriculture, forestry, mining and fishing	8 553.0	9 525.8	10 249.6	12 506.4	16 623.8	17 675.7	20 742.9	23 269.4	26 805.0	30 208.6	34 880.5	40 170.6	49 415.0
Mining and quarrying	985.6	995.3	991.9	1 229.0	1 391.7	1 551.8	1 468.3	1 566.6	2 149.3	2 514.0	2 457.7	2 572.8	2 508.3
Manufacturing	4 335.3	4 962.6	5 933.8	7 986.9	9 015.3	10 386.3	12 357.8	13 272.3	14 917.1	17 208.1	20 976.7	25 589.5	31 746.9
Construction	909.4	1 139.9	1 416.8	1 607.7	1 826.7	2 080.7	2 832.6	3 792.7	4 565.3	5 427.7	6 281.1	7 895.4	8 790.7
Electricity, gas, water and sanitary services	227.2	247.3	357.9	463.7	566.9	740.2	871.0	1 159.5	1 325.5	1 515.0	1 787.9	2 204.4	2 733.8
Transport, storage and communication	1 647.8	1 869.0	2 333.6	3 031.0	3 390.1	3 596.8	4 457.7	5 049.7	6 013.3	7 310.7	8 881.1	10 396.3	11 667.2
Commerce, financial institutions and real estate	3 929.9	4 431.7	5 051.9	6 442.6	8 028.0	9 735.7	11 725.3	13 372.4	15 329.6	17 172.4	20 521.2	24 121.1	29 754.8
Sellings	1 306.7	1 560.0	1 804.6	2 210.4	2 748.6	3 351.0	3 933.8	4 615.5	5 222.2	6 007.2	6 886.9	8 091.1	9 565.6
Public administration, defense and other services	3 178.4	3 942.7	4 410.4	5 816.4	6 863.1	7 775.2	9 503.0	10 842.4	12 436.2	14 372.5	17 353.2	21 053.3	25 049.8
<b>Total</b>	<b>25 073.3</b>	<b>28 674.3</b>	<b>32 450.5</b>	<b>41 294.1</b>	<b>50 457.2</b>	<b>56 893.4</b>	<b>67 892.4</b>	<b>76 940.5</b>	<b>88 763.5</b>	<b>101 736.2</b>	<b>120 026.3</b>	<b>142 024.5</b>	<b>171 232.1</b>

Table 2

## COLOMBIA: COMPENSATION OF EMPLOYEES BY KIND OF ECONOMIC ACTIVITY

(Millions of pesos)

Kind of economic activity	1960	1961	1962	1963	1964	1965	1966	1967	1968	1969	1970	1971	1972
Agriculture, forestry, hunting and fishing	2 704.9	3 076.1	3 413.1	4 429.3	5 060.8	6 034.1	6 674.7	7 555.6	8 076.0	9 368.4	10 065.8	11 316.4	12 889.9
Mining and quarrying	263.7	268.9	327.3	423.8	541.5	543.0	573.9	642.6	732.7	871.7	786.6	880.7	879.8
Manufacturing	1 510.9	1 794.5	2 155.0	2 919.0	3 435.9	3 952.1	4 674.0	5 166.5	5 986.8	6 858.2	8 773.2	10 525.3	12 765.2
Construction	657.3	822.4	1 012.3	1 183.3	1 348.3	1 549.2	2 141.2	2 935.3	3 567.0	4 402.2	5 091.8	6 225.5	6 654.3
Electricity, gas, water and sanitary services	66.4	79.2	111.9	203.6	222.0	279.2	316.5	439.9	484.7	531.5	657.1	817.3	957.6
Transport, storage and communication	733.7	886.9	1 143.5	1 459.3	1 625.4	1 773.9	2 270.7	2 507.1	2 732.6	3 419.1	4 058.5	4 860.0	5 917.2
Commerce, financial institutions and real estate	975.6	1 124.4	1 419.7	1 756.2	2 187.2	2 628.3	3 198.9	4 066.2	4 634.0	5 242.6	5 768.9	6 503.7	7 555.1
Wellings	-	-	-	-	-	-	-	-	-	-	-	-	-
Public administration, defense and other services	2 289.5	2 822.4	3 233.2	4 221.1	4 902.9	5 541.0	6 904.0	7 736.1	8 830.9	11 168.6	13 543.9	16 678.8	19 795.5
<u>Total</u>	<u>9 202.0</u>	<u>10 874.8</u>	<u>12 816.0</u>	<u>16 595.6</u>	<u>19 324.0</u>	<u>22 300.8</u>	<u>26 753.9</u>	<u>31 049.3</u>	<u>35 044.7</u>	<u>41 862.3</u>	<u>48 745.8</u>	<u>57 807.7</u>	<u>67 414.6</u>

Table 3

## COLOMBIA: WAGES AND SALARIES BY KIND OF ECONOMIC ACTIVITY

(Millions of pesos)

Kind of economic activity	1960	1961	1962	1963	1964	1965	1966	1967	1968	1969	1970	1971	1972
Agriculture, forestry, hunting and fishing	2 695.4	3 065.1	3 401.2	4 418.7	5 048.6	6 012.5	6 643.4	7 518.6	8 029.4	9 315.1	10 008.8	11 239.2	12 805.0
Mining and quarrying	256.6	261.9	318.9	413.7	527.8	527.5	554.5	613.4	698.9	831.9	748.3	834.7	835.3
Manufacturing	1 486.1	1 766.7	2 122.2	2 877.2	3 386.3	3 886.0	4 580.9	5 027.2	5 821.0	6 670.6	8 514.7	10 190.3	12 372.8
Construction	650.4	814.5	1 002.8	1 172.0	1 335.3	1 532.6	2 113.6	2 885.0	3 501.1	4 322.0	4 993.7	6 098.1	6 522.8
Electricity, gas, water and sanitary services	64.6	77.2	109.0	198.7	216.3	271.2	305.7	419.9	461.7	507.2	624.4	774.6	909.3
Transport, storage and communication	721.6	873.2	1 126.1	1 438.4	1 601.9	1 744.3	2 225.5	2 439.5	2 656.9	3 325.5	3 939.0	4 705.3	5 735.3
Commerce, financial institutions and real estate	956.2	1 102.9	1 393.1	1 724.8	2 147.7	2 571.8	3 120.2	3 961.6	4 478.9	5 069.4	5 559.7	6 245.0	7 264.0
Wellings	-	-	-	-	-	-	-	-	-	-	-	-	-
Public administration, defense and other services	2 251.9	2 778.5	3 183.9	4 160.6	4 832.3	5 448.2	6 766.6	7 527.7	8 586.3	10 863.1	13 144.9	16 147.8	19 186.7
<b>Total</b>	<b>2 082.8</b>	<b>10 740.0</b>	<b>12 657.2</b>	<b>16 404.1</b>	<b>19 096.2</b>	<b>21 994.1</b>	<b>26 310.4</b>	<b>30 322.9</b>	<b>34 274.2</b>	<b>40 904.8</b>	<b>47 533.5</b>	<b>56 235.0</b>	<b>65 632.0</b>

Table 4

## COLOMBIA: EMPLOYERS' SOCIAL SECURITY CONTRIBUTIONS BY KIND OF ECONOMIC ACTIVITY

(Millions of pesos)

Kind of economic activity	1960	1961	1962	1963	1964	1965	1966	1967	1968	1969	1970	1971	1972
Agriculture, forestry, hunting and fishing	9.5	11.0	11.9	10.6	12.2	21.6	31.3	37.0	46.6	53.3	57.0	77.2	84.9
Mining and quarrying	7.1	7.0	8.4	10.1	13.7	15.5	19.4	29.2	33.8	39.8	38.3	46.0	44.5
Manufacturing	24.8	27.8	32.8	41.8	49.6	66.1	93.1	139.3	165.8	187.6	258.5	335.0	392.4
Construction	6.9	7.9	9.5	11.3	13.0	16.6	27.6	50.3	65.9	80.2	98.1	127.4	131.5
Electricity, gas, water and sanitary services	1.8	2.0	2.9	4.9	5.7	8.0	10.8	20.0	23.0	24.3	32.7	42.7	48.3
Transport, storage and communication	12.1	13.7	17.4	20.9	23.5	29.6	45.2	67.6	75.7	93.6	119.5	154.7	181.9
Commerce, financial institutions and real estate	19.4	21.5	26.6	31.4	39.5	56.5	78.7	104.6	155.1	173.2	209.2	258.7	290.3
Dwellings	-	-	-	-	-	-	-	-	-	-	-	-	-
Public administration, defense and other services	37.6	43.9	49.3	60.5	70.6	92.8	137.4	208.4	244.6	305.5	399.0	531.0	608.8
<u>Total</u>	<u>119.2</u>	<u>134.8</u>	<u>158.8</u>	<u>191.5</u>	<u>227.8</u>	<u>306.7</u>	<u>443.5</u>	<u>656.4</u>	<u>810.5</u>	<u>957.5</u>	<u>1 212.3</u>	<u>1 572.7</u>	<u>1 782.6</u>



Table 5

## COLOMBIA: GROSS OPERATING SURPLUS BY KIND OF ECONOMIC ACTIVITY

(Millions of pesos)

Kind of economic activity	1960	1961	1962	1963	1964	1965	1966	1967	1968	1969	1970	1971	1972
Agriculture, forestry, hunting and fishing	5 848.1	6 449.7	6 736.5	8 077.1	11 563.0	11 641.6	14 068.2	15 713.8	18 729.0	20 840.2	24 814.7	28 854.2	36 525.1
Mining and quarrying	721.9	726.4	664.6	805.2	853.2	1 008.8	894.4	924.0	1 416.6	1 642.3	1 671.1	1 692.1	1 628.5
Manufacturing	2 824.4	3 168.1	3 778.8	5 067.9	5 579.4	6 434.2	7 683.8	8 105.8	8 930.3	10 349.9	12 203.5	15 064.2	18 981.7
Construction	252.1	317.5	404.5	424.4	478.4	531.5	691.4	857.4	998.3	1 025.5	1 189.3	1 669.9	2 136.4
Electricity, gas, water and sanitary services	160.8	168.1	246.0	260.1	344.9	461.0	554.5	719.6	840.8	983.5	1 130.8	1 387.1	1 776.2
Transport, storage and communication	914.1	982.1	1 190.1	1 571.7	1 764.7	1 822.9	2 187.0	2 542.6	3 280.7	3 891.6	4 822.6	5 476.3	5 750.0
Commerce, financial institutions and real estate	2 954.3	3 307.3	3 632.2	4 686.4	5 840.8	7 107.4	8 526.4	9 306.2	10 695.6	11 929.8	14 752.3	17 617.4	22 199.7
Dwellings	1 306.7	1 560.0	1 804.6	2 210.4	2 748.6	3 351.0	3 933.8	4 615.5	5 222.2	6 007.2	6 886.9	8 091.1	9 565.6
Public administration, defense and other services	888.9	1 120.3	1 177.2	1 595.3	1 960.2	2 234.2	2 599.0	3 106.3	3 605.3	3 203.9	3 809.3	4 374.5	5 254.3
<b>Total</b>	<b>15 871.3</b>	<b>17 799.5</b>	<b>19 634.5</b>	<b>24 698.5</b>	<b>31 133.2</b>	<b>34 592.6</b>	<b>41 138.5</b>	<b>45 891.2</b>	<b>53 718.8</b>	<b>59 873.9</b>	<b>71 280.5</b>	<b>84 226.8</b>	<b>103 817.5</b>

Table 6

## COLOMBIA: DEPRECIATION BY KIND OF ECONOMIC ACTIVITY

(Millions of pesos)

Kind of economic activity	1960	1961	1962	1963	1964	1965	1966	1967	1968	1969	1970	1971	1972
Agriculture, forestry, hunting and fishing	579.6	593.6	614.7	775.8	899.7	969.8	1 203.1	1 340.5	1 530.5	1 662.2	1 847.4	2 140.5	2 483.3
Mining and quarrying	133.5	124.1	120.2	152.5	151.0	170.3	170.3	180.4	245.4	276.6	260.3	274.2	252.1
Manufacturing	514.0	541.1	628.9	867.0	853.9	997.3	1 254.3	1 338.0	1 490.5	1 657.0	1 944.4	2 386.2	2 792.0
Construction	92.5	106.6	128.7	149.6	148.3	171.3	246.4	327.7	391.0	448.0	499.0	631.1	662.6
Electricity, gas, water and sanitary services	42.3	42.3	59.6	79.0	84.3	111.6	138.9	183.6	208.0	223.3	260.2	322.9	377.6
Transport, storage and communication	279.1	291.1	353.3	470.1	458.7	495.4	646.3	727.3	858.3	1 005.5	1 176.0	1 376.9	1 455.9
Commerce, financial institutions and real estate	465.9	483.3	535.4	699.3	760.4	934.9	1 190.1	1 348.1	1 531.7	1 653.6	1 902.1	2 249.3	2 616.8
Dwellings	398.4	437.5	491.9	616.9	669.4	827.4	1 026.7	1 196.5	1 341.8	1 487.5	1 641.5	1 940.1	2 163.2
Public administration, defense and other services	162.2	184.2	200.1	270.6	278.5	320.0	413.2	468.5	532.4	593.2	689.4	841.3	944.3
<b>Total</b>	<b>2 666.2</b>	<b>2 803.8</b>	<b>3 132.8</b>	<b>4 080.8</b>	<b>4 304.2</b>	<b>4 996.0</b>	<b>6 289.3</b>	<b>7 110.6</b>	<b>8 129.6</b>	<b>9 013.0</b>	<b>10 220.3</b>	<b>12 162.5</b>	<b>13 757.8</b>

Table 7

## COLOMBIA: NET OPERATING SURPLUS BY KIND OF ECONOMIC ACTIVITY

(Millions of pesos)

Kind of economic activity	1960	1961	1962	1963	1964	1965	1966	1967	1968	1969	1970	1971	1972
Agriculture, forestry, hunting and fishing	5 268.5	5 856.1	6 121.8	7 301.3	10 663.3	10 671.8	12 865.1	14 373.3	17 198.5	19 178.0	22 967.3	26 713.7	34 041.8
Mining and quarrying	588.4	602.3	544.4	652.7	702.2	838.5	724.1	743.6	1 171.2	1 365.7	1 410.8	1 417.9	1 376.4
Manufacturing	2 310.4	2 627.0	3 149.9	4 200.9	4 725.5	5 436.9	6 429.5	6 767.8	7 439.8	8 692.9	10 259.1	12 678.0	16 189.7
Construction	159.6	210.9	275.8	274.8	330.1	360.2	445.0	529.7	607.3	577.5	690.3	1 038.8	1 473.8
Electricity, gas, water and sanitary services	118.5	125.8	186.4	181.1	260.6	349.4	415.6	536.0	632.8	754.2	870.6	1 064.2	1 398.6
Transport, storage and communication	635.0	691.0	836.8	1 101.6	1 306.0	1 329.5	1 540.7	1 815.3	2 422.4	2 886.0	3 646.6	4 099.4	4 284.1
Commerce, financial institutions and real estate	2 488.4	2 824.0	3 096.8	3 987.1	5 080.4	6 172.5	7 336.3	7 958.1	9 163.9	10 276.2	12 850.2	15 968.1	19 582.9
Wellings	908.3	1 122.5	1 312.7	1 593.5	2 079.2	2 523.6	2 907.1	3 419.0	3 880.4	4 519.7	5 245.4	6 151.0	7 402.4
Public administration, defense and other services	726.7	936.1	977.1	1 324.7	1 681.7	1 914.2	2 185.8	2 637.8	3 072.9	2 610.7	3 119.9	3 533.2	4 310.0
<b>Total</b>	<b>13 204.4</b>	<b>14 995.7</b>	<b>16 501.7</b>	<b>20 617.7</b>	<b>26 829.0</b>	<b>29 596.6</b>	<b>34 849.2</b>	<b>38 780.6</b>	<b>45 589.2</b>	<b>50 860.9</b>	<b>61 060.2</b>	<b>72 064.3</b>	<b>90 059.7</b>

Handwritten text, likely bleed-through from the reverse side of the page. The text is extremely faint and illegible due to the quality of the scan. It appears to be organized into several columns and rows, possibly representing a list or a table of data.

COSTA RICA



Table 1

## COSTA RICA: GROSS VALUE ADDED AT FACTOR COST BY KIND OF ECONOMIC ACTIVITY

(Millions of colones)

Kind of economic activity	1960	1961	1962	1963	1964	1965	1966	1967	1968	1969	1970	1971	1972
Agriculture, forestry, hunting and fishing	735.7	741.4	808.0	819.8	870.5	907.8	978.0	1 047.5	1 159.7	1 283.1	1 452.1	1 421.3	1 572.0
Mining and quarrying	...	...	...	...	...	...	...	...	...	...	...	...	...
Manufacturing <sup>a/</sup>	315.3	320.7	338.4	392.1	449.7	514.0	561.6	598.6	692.7	773.5	878.4	1 003.7	1 120.2
Construction	124.0	145.7	167.9	171.0	155.1	184.4	183.9	203.0	226.7	244.0	275.2	340.6	419.6
Electricity, gas, water and sanitary services	32.0	36.4	40.9	45.1	53.5	60.3	67.7	71.0	84.9	98.3	114.3	132.7	153.7
Transport, storage and communication	120.8	126.5	135.5	145.9	161.0	168.9	182.1	198.8	217.5	254.0	276.7	319.4	363.8
Commerce, financial institutions and real estate	514.1	529.7	585.5	627.6	668.7	731.1	823.8	897.2	962.7	1 062.2	1 299.7	1 417.9	1 620.2
Banking and insurances	285.4	301.0	323.6	350.6	351.7	364.1	383.1	414.2	432.5	455.2	485.5	508.9	532.3
Public administration, defense and other services	406.8	436.3	470.6	510.7	547.8	606.1	690.4	746.3	807.2	909.2	1 017.4	1 177.9	1 404.8
<u>Total</u>	<u>2 534.1</u>	<u>2 637.7</u>	<u>2 870.4</u>	<u>3 062.8</u>	<u>3 258.0</u>	<u>3 536.7</u>	<u>3 870.6</u>	<u>4 176.6</u>	<u>4 583.9</u>	<u>5 079.5</u>	<u>5 799.3</u>	<u>6 322.4</u>	<u>7 186.6</u>

/ Includes: Mining and quarrying.

Table 2

## COSTA RICA: COMPENSATION OF EMPLOYEES BY KIND OF ECONOMIC ACTIVITY

(Millions of colones)

Kind of economic activity	1960	1961	1962	1963	1964	1965	1966	1967	1968	1969	1970	1971	1972
Agriculture, forestry, hunting and fishing	348.1	354.4	374.2	375.9	389.2	402.5	448.6	472.9	504.1	542.7	622.4	587.5	626.4
Mining and quarrying	...	...	...	...	...	...	...	...	...	...	...	...	...
Manufacturing <sup>a/</sup>	149.7	153.6	169.8	190.5	220.4	255.0	287.2	311.5	360.8	400.4	467.7	530.5	588.1
Construction	92.4	108.5	125.0	129.2	120.9	143.4	143.0	152.7	168.2	180.8	204.8	257.5	324.1
Electricity, gas, water and sanitary services	16.2	18.1	19.2	22.3	23.1	25.1	25.4	27.2	32.6	36.4	43.4	55.6	52.8
Transport, storage and communication	80.6	85.5	85.6	91.1	99.2	111.6	117.5	124.8	132.6	152.2	169.2	203.8	224.6
Commerce, financial institutions and real estate	260.8	275.1	298.2	322.0	350.8	380.2	436.5	475.6	510.9	561.0	656.9	740.6	833.2
Dwellings	-	-	-	-	-	-	-	-	-	-	-	-	-
Public administration, defense and other services	354.2	381.0	407.8	442.5	473.7	522.9	599.1	649.5	703.3	789.3	893.1	1 048.1	1 263.5
<u>Total</u>	<u>1 302.0</u>	<u>1 376.2</u>	<u>1 479.8</u>	<u>1 573.5</u>	<u>1 677.3</u>	<u>1 840.7</u>	<u>2 057.3</u>	<u>2 214.2</u>	<u>2 412.5</u>	<u>2 662.8</u>	<u>3 057.5</u>	<u>3 423.6</u>	<u>3 912.7</u>

<sup>a/</sup> Includes: Mining and quarrying.



Table 3

## COSTA RICA: WAGES AND SALARIES BY KIND OF ECONOMIC ACTIVITY

(Millions of colones)

Kind of economic activity	1960	1961	1962	1963	1964	1965	1966	1967	1968	1969	1970	1971	1972
Agriculture, forestry, hunting and fishing	346.5	352.7	372.2	373.7	386.8	400.0	446.1	470.0	500.5	538.8	618.3	583.6	622.2
Mining and quarrying	...	...	...	...	...	...	...	...	...	...	...	...	...
Manufacturing <sup>a/</sup>	146.7	150.2	165.5	185.1	214.1	247.9	279.2	302.3	349.6	388.1	454.4	513.5	564.7
Construction	91.0	106.8	122.8	126.7	118.5	140.5	139.9	149.4	164.3	176.6	199.6	250.2	312.6
Electricity, gas, water and sanitary services	15.7	17.4	18.5	21.3	22.0	23.9	24.2	25.6	30.7	34.2	40.6	51.6	48.0
Transport, storage and communication	78.9	83.6	83.5	88.7	96.4	108.5	114.2	120.8	128.2	147.1	163.2	195.7	213.4
Commerce, financial institutions and real estate	255.3	268.7	290.7	313.3	340.9	368.6	423.7	460.4	492.9	540.6	631.8	708.8	788.7
Sellings	-	-	-	-	-	-	-	-	-	-	-	-	-
Public administration, defense and other services	347.3	372.9	398.5	431.6	461.3	508.4	582.4	628.8	679.9	762.5	862.3	1 007.5	1 202.5
<b>Total</b>	<b>1 281.4</b>	<b>1 352.3</b>	<b>1 451.7</b>	<b>1 540.4</b>	<b>1 640.0</b>	<b>1 797.5</b>	<b>2 009.7</b>	<b>2 157.3</b>	<b>2 346.1</b>	<b>2 587.9</b>	<b>2 970.2</b>	<b>3 310.9</b>	<b>3 752.1</b>

1  
30  
1<sup>a/</sup> Includes: Mining and quarrying.

Table 4

## COSTA RICA: EMPLOYERS' SOCIAL SECURITY CONTRIBUTIONS BY KIND OF ECONOMIC ACTIVITY

(Millions of colones)

Kind of economic activity	1960	1961	1962	1963	1964	1965	1966	1967	1968	1969	1970	1971	1972
Agriculture, forestry, hunting and fishing	1.6	1.7	2.0	2.2	2.4	2.5	2.5	2.9	3.6	3.9	4.1	3.9	4.2
Mining and quarrying	...	...	...	...	...	...	...	...	...	...	...	...	...
Manufacturing <sup>a/</sup>	3.0	3.4	4.3	5.4	6.3	7.1	8.0	9.2	11.2	12.3	13.3	17.0	23.4
Construction	1.4	1.7	2.2	2.5	2.4	2.9	3.1	3.3	3.9	4.2	5.2	7.3	11.5
Electricity, gas, water and sanitary services	0.5	0.7	0.7	1.0	1.1	1.2	1.2	1.6	1.9	2.2	2.8	4.0	4.8
Transport, storage and communication	1.7	1.9	2.1	2.4	2.8	3.1	3.3	4.0	4.4	5.1	6.0	8.1	11.2
Commerce, financial institutions and real estate	5.5	6.4	7.5	8.7	9.9	11.6	12.8	15.2	18.0	20.4	25.1	31.8	44.5
Dwellings	-	-	-	-	-	-	-	-	-	-	-	-	-
Public administration, defense and other services	6.9	8.1	9.3	10.9	12.4	14.5	16.7	20.7	23.4	26.8	30.8	40.6	61.0
<b>Total</b>	<b>20.6</b>	<b>23.9</b>	<b>28.1</b>	<b>33.1</b>	<b>37.3</b>	<b>43.2</b>	<b>47.6</b>	<b>56.9</b>	<b>66.4</b>	<b>74.9</b>	<b>87.3</b>	<b>112.7</b>	<b>160.6</b>

<sup>a/</sup> Includes: Mining and quarrying.

Table 5

## COSTA RICA: GROSS OPERATING SURPLUS BY KIND OF ECONOMIC ACTIVITY

(Millions of colones)

Kind of economic activity	1960	1961	1962	1963	1964	1965	1966	1967	1968	1969	1970	1971	1972
Agriculture, forestry, hunting and fishing	387.6	387.0	433.8	443.9	481.3	505.3	529.4	574.6	655.6	740.4	829.7	833.8	945.6
Mining and quarrying	...	...	...	...	...	...	...	...	...	...	...	...	...
Manufacturing <sup>a/</sup>	165.6	167.1	168.6	201.6	229.3	259.0	274.4	287.1	331.9	373.1	410.7	473.2	532.1
Construction	31.6	37.2	42.9	41.8	34.2	41.0	40.9	50.3	58.5	63.2	70.4	83.1	95.5
Electricity, gas, water and sanitary services	15.8	18.3	21.7	22.8	30.4	35.2	42.3	43.8	52.3	61.9	70.9	77.1	100.9
Transport, storage and communication	40.2	41.0	49.9	54.8	61.8	57.3	64.6	74.0	84.9	101.8	107.5	115.6	139.2
Commerce, financial institutions and real estate	253.3	254.6	287.3	305.6	317.9	350.9	387.3	421.6	451.8	501.2	642.8	677.3	787.0
Wellings	285.4	301.0	323.6	350.6	351.7	364.1	383.1	414.2	432.5	455.2	485.5	508.9	532.3
Public administration, defense and other services	52.6	55.3	62.8	68.2	74.1	83.2	91.3	96.8	103.9	119.9	124.3	129.8	141.3
<b>Total</b>	<b>1 232.1</b>	<b>1 261.5</b>	<b>1 390.6</b>	<b>1 489.3</b>	<b>1 580.7</b>	<b>1 696.0</b>	<b>1 813.3</b>	<b>1 962.4</b>	<b>2 171.4</b>	<b>2 416.7</b>	<b>2 741.8</b>	<b>2 898.8</b>	<b>3 273.9</b>

/ Includes: Mining and quarrying.

Table 6

## COSTA RICA: DEPRECIATION BY KIND OF ECONOMIC ACTIVITY

(Millions of colones)

Kind of economic activity	1960	1961	1962	1963	1964	1965	1966	1967	1968	1969	1970	1971	1972
Agriculture, forestry, hunting and fishing	17.7	18.1	18.5	18.9	19.4	21.2	23.3	26.0	29.9	34.2	39.5	48.1	56.0
Mining and quarrying	...	...	...	...	...	...	...	...	...	...	...	...	...
Manufacturing and construction	30.7	32.7	36.0	40.6	46.8	52.5	58.1	65.5	81.8	90.2	109.7	119.6	134.6
Electricity, gas, water and sanitary services	10.3	12.0	13.8	13.5	11.1	13.4	13.6	16.4	19.5	20.9	23.4	27.2	31.4
Transport, storage and communication	6.8	6.9	6.9	7.8	10.1	12.2	12.8	15.3	18.2	24.4	42.8	21.8	25.4
Commerce, financial institutions and real estate	15.7	15.6	17.8	19.1	21.2	23.1	28.2	32.5	35.7	36.0	45.6	55.2	61.0
Savings	16.1	16.6	17.9	19.2	20.6	22.9	23.9	29.7	34.4	37.8	42.0	48.3	53.9
Public administration, defense and other services	63.1	66.6	71.7	76.8	79.2	81.5	84.0	86.9	91.8	96.0	101.3	107.2	115.1
<b>Total</b>	<b>167.5</b>	<b>176.1</b>	<b>191.4</b>	<b>205.4</b>	<b>218.8</b>	<b>238.2</b>	<b>255.8</b>	<b>284.5</b>	<b>324.0</b>	<b>353.5</b>	<b>415.5</b>	<b>449.7</b>	<b>503.6</b>

Includes: Mining and quarrying.

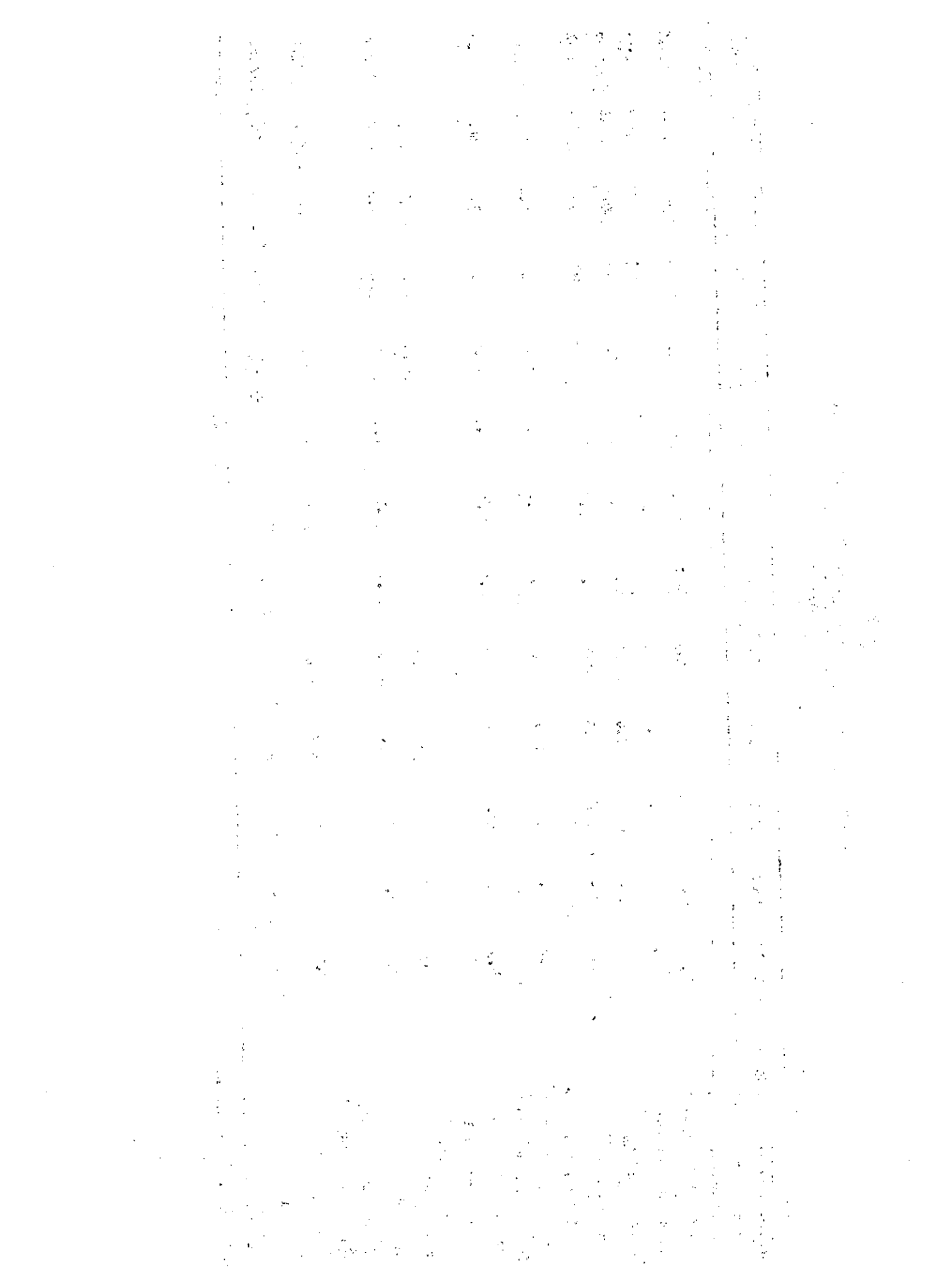
Table 7

## COSTA RICA: NET OPERATING SURPLUS BY KIND OF ECONOMIC ACTIVITY

(Millions of colones)

Kind of economic activity	1960	1961	1962	1963	1964	1965	1966	1967	1968	1969	1970	1971	1972
Agriculture, forestry, hunting and fishing	369.9	368.9	415.3	425.0	461.9	484.1	506.1	548.6	625.7	706.2	790.2	785.7	889.6
Mining and quarrying	...	...	...	...	...	...	...	...	...	...	...	...	...
Manufacturing and construction	134.9	134.4	132.6	161.0	182.5	206.5	216.3	221.6	250.1	282.9	307.0	353.6	387.5
Electricity, gas, water and sanitary services	21.3	25.2	29.1	28.3	23.1	27.6	27.3	33.9	39.0	42.3	47.0	55.9	64.1
Transport, storage and communication	9.0	11.4	14.8	15.0	20.3	23.0	29.5	28.5	34.1	37.5	28.1	55.3	75.5
Commerce, financial institutions and real estate	24.5	25.4	32.1	35.7	40.6	34.2	36.4	41.5	49.2	65.8	61.9	60.4	78.2
Retailing	237.2	238.0	269.4	286.4	297.3	328.0	363.4	391.9	417.4	463.4	600.8	629.0	733.1
Public administration, defense and other services	222.3	234.4	251.9	273.8	272.5	282.6	299.1	327.3	340.7	359.2	384.2	401.7	417.2
<b>Total</b>	<b>1 064.6</b>	<b>1 085.4</b>	<b>1 199.2</b>	<b>1 283.2</b>	<b>1 361.9</b>	<b>1 457.8</b>	<b>1 527.5</b>	<b>1 677.9</b>	<b>1 847.4</b>	<b>2 063.2</b>	<b>2 326.3</b>	<b>2 449.1</b>	<b>2 770.3</b>

Includes Mining and quarrying.



CHILE





Table 1

## CHILE: GROSS VALUE ADDED AT FACTOR COST BY KIND OF ECONOMIC ACTIVITY

(Millions of escudos)

Kind of economic activity	1960	1961	1962	1963	1964	1965	1966	1967	1968	1969	1970	1971	1972
Agriculture, forestry, hunting and fishing	456.6	486.8	527.1	794.8	1 260.8	1 743.9	2 204.8	2 911.6	3 187.0	4 414.2	6 385.4	9 524.0	15 127.0
Minining and quarrying	375.2	380.8	455.5	765.6	1 153.6	1 764.6	2 876.0	3 441.2	4 767.4	8 329.8	10 100.1	8 930.0	14 859.0
Manufacturing	874.7	986.9	1 254.6	1 918.2	3 043.1	4 118.5	5 642.6	7 688.1	11 339.1	16 195.3	23 569.9	28 625.0	54 941.0
Construction	167.9	205.5	277.5	449.2	679.4	985.2	1 254.3	1 438.0	1 827.1	2 504.5	3 611.3	6 176.0	11 570.0
Electricity, gas, water and sanitary services	46.6	56.9	65.3	92.9	147.8	250.4	340.5	445.8	584.7	898.3	1 244.9	1 382.0	1 872.0
Transport, storage and communication	270.6	283.3	358.8	480.8	731.9	1 061.4	1 435.9	1 894.5	2 491.8	3 579.7	4 904.5	7 018.0	13 927.0
Commerce, financial institutions and real estate	672.3	818.1	1 017.6	1 569.0	2 266.8	3 077.5	4 198.9	5 400.7	7 189.7	10 426.3	14 889.2	21 442.0	47 050.0
Wellings	230.9	238.8	273.8	355.2	458.8	515.0	626.4	756.0	847.0	1 025.8	1 354.5	2 796.0	2 668.0
Public administration, defense and other services	673.4	793.8	948.5	1 254.1	1 928.8	2 849.1	4 051.0	5 432.2	7 445.5	10 454.8	16 183.4	26 131.0	48 028.0
<b>Total</b>	<b>3 758.2</b>	<b>4 250.9</b>	<b>5 178.7</b>	<b>7 679.8</b>	<b>11 671.0</b>	<b>16 365.6</b>	<b>22 630.4</b>	<b>29 408.1</b>	<b>39 672.3</b>	<b>57 888.7</b>	<b>82 243.2</b>	<b>112 024.0</b>	<b>210 042.0</b>

Table 2

## CHILE: COMPENSATION OF EMPLOYEES BY KIND OF ECONOMIC ACTIVITY

(Millions of escudos)

Kind of economic activity	1960	1961	1962	1963	1964	1965	1966	1967	1968	1969	1970	1971	1972
Agriculture, forestry, hunting and fishing	144	168	194	266	399	642	849	969	1 216	1 612	2 594	4 283	7 988
Mining and quarrying	150	182	204	296	417	625	872	1 133	1 597	2 470	3 605	4 727	11 027
Manufacturing	331	379	453	675	1 019	1 455	2 072	2 804	4 238	6 219	9 106	16 839	25 902
Construction	86	99	132	216	338	515	694	779	994	1 467	2 111	3 228	6 796
Electricity, gas, water and sanitary services	25	30	38	51	78	124	190	251	340	461	699	1 067	1 640
Transport, storage and communication	137	165	200	270	414	626	890	1 206	1 598	2 203	3 291	4 980	9 105
Commerce, financial institutions and real estate	244	286	344	463	688	1 054	1 494	1 955	2 660	3 913	5 873	8 973	16 580
Wellings	-	-	-	-	-	-	-	-	-	-	-	-	-
Public administration, defense and other services	510	612	725	980	1 503	2 291	3 294	4 309	6 064	8 511	13 690	20 830	39 639
<b>Total</b>	<b>1 627</b>	<b>1 921</b>	<b>2 290</b>	<b>3 217</b>	<b>4 856</b>	<b>7 332</b>	<b>10 355</b>	<b>13 406</b>	<b>18 707</b>	<b>26 856</b>	<b>40 962</b>	<b>64 927</b>	<b>118 677</b>

Table 3

## CHILE: WAGES AND SALARIES BY KIND OF ECONOMIC ACTIVITY

(Millions of escudos)

Kind of economic activity	1960	1961	1962	1963	1964	1965	1966	1967	1968	1969	1970	1971	1972
Agriculture, forestry, hunting and fishing	126	147	169	231	344	551	712	793	993	1 300	2 130	3 516	6 592
Mining and quarrying	120	144	163	243	338	510	710	933	1 315	1 990	2 862	3 687	8 656
Manufacturing	270	307	371	558	833	1 167	1 643	2 253	3 508	5 122	7 469	13 766	21 292
Construction	68	79	108	179	276	418	548	621	795	1 116	1 560	2 429	5 152
Electricity, gas, water and sanitary services	20	24	31	41	62	92	147	199	259	376	572	864	1 337
Transport, storage and communication	121	144	175	233	356	540	756	1 046	1 376	1 888	2 800	4 222	7 753
Commerce, financial institutions and real estate	198	230	279	373	555	857	1 197	1 559	2 090	3 087	4 667	7 042	13 098
Dwellings	-	-	-	-	-	-	-	-	-	-	-	-	-
Public administration, defense and other services	476	571	679	915	1 384	2 087	3 000	3 974	5 581	7 816	12 671	19 253	36 723
<b>Total</b>	<b>1 399</b>	<b>1 646</b>	<b>1 975</b>	<b>2 773</b>	<b>4 148</b>	<b>6 222</b>	<b>8 713</b>	<b>11 378</b>	<b>15 917</b>	<b>22 695</b>	<b>34 731</b>	<b>54 779</b>	<b>100 603</b>

Table 4

## CHILE: EMPLOYERS' SOCIAL SECURITY CONTRIBUTIONS BY KIND OF ECONOMIC ACTIVITY

(Millions of escudos)

Kind of economic activity	1960	1961	1962	1963	1964	1965	1966	1967	1968	1969	1970	1971	1972
Agriculture, forestry, hunting and fishing	18	22	25	35	55	91	137	176	223	312	464	767	1 396
Mining and quarrying	30	38	41	53	79	115	162	200	282	480	743	1 046	2 371
Manufacturing	61	72	82	117	186	288	429	551	730	1 097	1 637	3 073	4 610
Construction	18	20	24	37	62	97	146	158	199	351	551	799	1 644
Electricity, gas, water and sanitary services	5	6	7	10	16	32	43	52	81	85	127	203	303
Transport, storage and communication	16	21	25	37	58	86	134	160	222	315	491	758	1 352
Commerce, financial institutions and real estate	46	56	65	90	133	197	297	396	570	826	1 206	1 931	3 482
Religions	-	-	-	-	-	-	-	-	-	-	-	-	-
Public administration, defense and other services	34	41	46	65	119	204	294	335	483	695	1 019	1 577	2 916
<b>Total</b>	<b>228</b>	<b>276</b>	<b>315</b>	<b>444</b>	<b>708</b>	<b>1 110</b>	<b>1 642</b>	<b>2 028</b>	<b>2 790</b>	<b>4 161</b>	<b>6 238</b>	<b>10 148</b>	<b>18 074</b>

Table 5

## CHILE: GROSS OPERATING SURPLUS BY KIND OF ECONOMIC ACTIVITY

(Millions of escudos)

Kind of economic activity	1960	1961	1962	1963	1964	1965	1966	1967	1968	1969	1970	1971	1972
Agriculture, forestry, hunting and fishing	312.6	318.8	333.1	528.8	861.8	1 101.9	1 355.8	1 942.6	1 971.0	2 802.2	3 791.4	5 241.0	7 139.0
Mining and quarrying	225.2	198.8	251.5	469.6	736.6	1 139.6	2 004.0	2 308.2	3 170.4	5 859.8	6 495.1	4 203.0	3 832.0
Manufacturing	543.7	607.9	801.6	1 243.2	2 024.1	2 663.5	3 570.6	4 884.1	7 101.1	9 976.3	14 463.9	11 786.0	29 039.0
Construction	81.9	106.5	145.5	233.2	341.4	470.2	560.3	659.0	833.1	1 097.5	1 500.3	2 948.0	4 774.0
Electricity, gas, water and sanitary services	21.6	26.9	27.3	41.9	69.8	126.4	150.5	194.8	244.7	437.3	545.9	315.0	232.0
Transport, storage and communication	133.6	118.3	158.8	210.8	317.9	435.4	545.9	688.5	893.8	1 376.7	1 613.5	2 038.0	4 822.0
Commerce, financial institutions and real estate	428.3	532.1	673.6	1 106.0	1 578.8	2 023.5	2 704.9	3 445.7	4 529.7	6 513.3	9 016.2	12 469.0	30 470.0
Sellings	230.9	238.8	273.8	355.2	458.8	515.0	626.4	756.0	847.0	1 025.8	1 354.5	2 796.0	2 668.0
Public administration, defense and other services	163.4	181.8	223.5	274.1	425.8	558.1	757.0	1 123.2	1 381.5	1 943.8	2 493.4	5 301.0	8 389.0
<b>Total</b>	<b>2 141.2</b>	<b>2 329.9</b>	<b>2 888.7</b>	<b>4 462.8</b>	<b>6 815.0</b>	<b>9 033.6</b>	<b>12 275.4</b>	<b>16 002.1</b>	<b>20 972.3</b>	<b>31 032.7</b>	<b>41 274.2</b>	<b>47 097.0</b>	<b>91 365.0</b>

Table 6

## CHILE: DEPRECIATION BY KIND OF ECONOMIC ACTIVITY

(Millions of escudos)

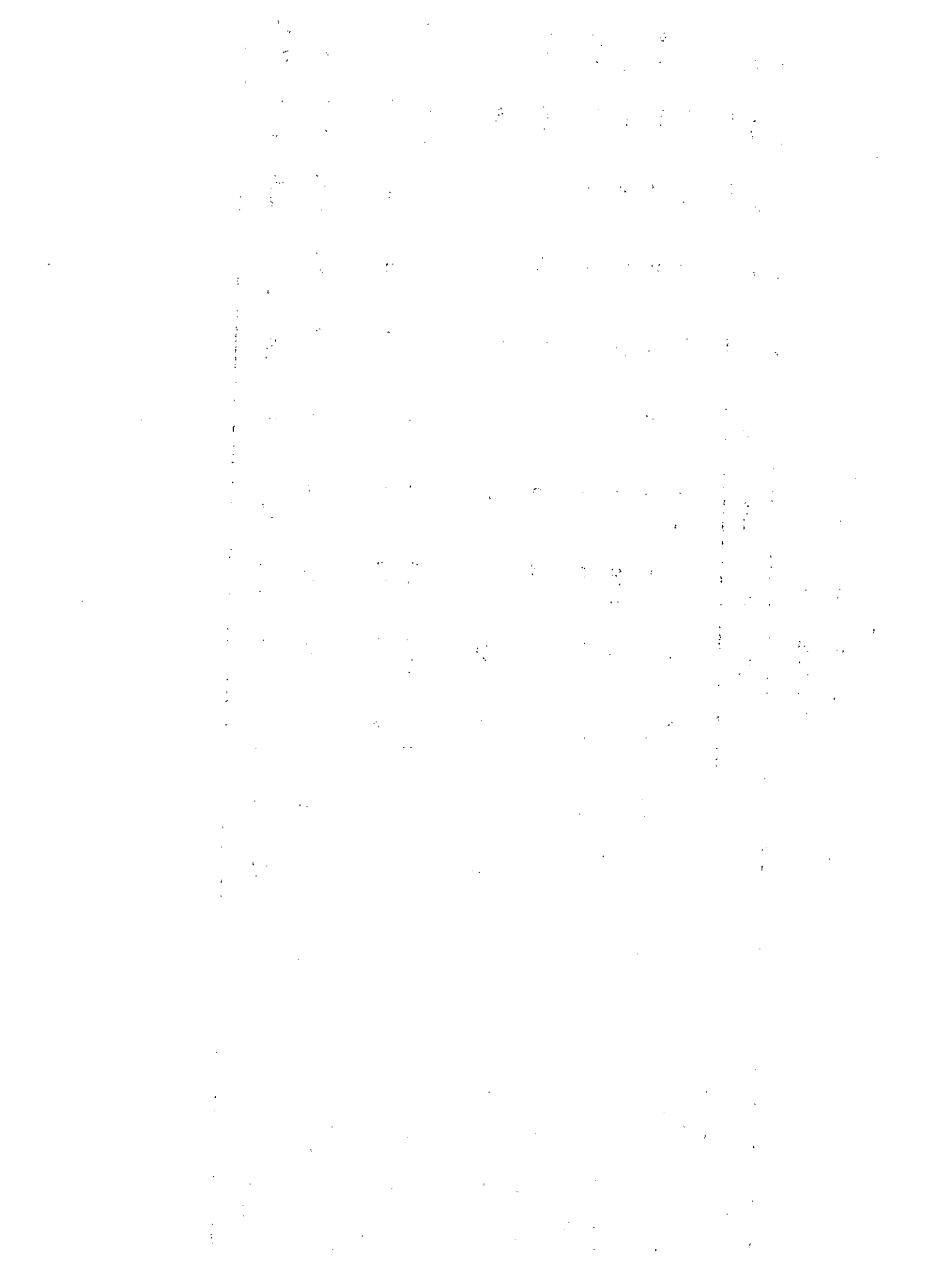
Kind of economic activity	1960	1961	1962	1963	1964	1965	1966	1967	1968	1969	1970	1971	1972
Agriculture, forestry, hunting and fishing	73.6	53.8	71.1	119.8	167.8	229.9	230.8	290.6	378.0	521.2	713.4	886.0	1 217.0
Mining and quarrying	49.2	41.8	56.5	118.6	167.6	242.6	304.0	346.2	339.4	583.8	794.1	627.0	1 048.0
Manufacturing	89.7	90.9	98.6	150.2	235.1	332.5	456.6	626.1	805.1	1 205.3	1 700.9	2 329.0	6 212.0
Construction	16.9	20.5	26.5	47.2	79.4	96.2	114.3	140.0	167.1	259.5	375.3	417.0	461.0
Electricity, gas, water and sanitary services	13.6	10.9	12.3	21.9	31.8	63.4	80.5	98.8	150.7	217.3	358.9	480.0	591.0
Transport, storage and communication	63.6	67.3	79.8	129.8	189.9	263.4	333.9	462.5	660.8	921.7	1 267.5	1 553.0	2 552.0
Commerce, financial institutions and real estate	59.3	62.1	70.6	99.0	132.8	184.5	222.9	286.7	375.7	531.3	703.2	984.0	2 400.0
Dwellings	207.9	92.8	128.8	152.2	229.8	347.0	418.4	549.0	729.0	909.8	1 447.5	3 222.0	3 300.0
Public administration, defense and other services	43.4	21.8	27.5	39.1	58.8	80.1	107.0	133.2	248.5	239.8	278.4	360.0	370.0
<u>Total</u>	<u>617.2</u>	<u>461.9</u>	<u>571.7</u>	<u>877.8</u>	<u>1 293.0</u>	<u>1 839.6</u>	<u>2 268.4</u>	<u>2 933.1</u>	<u>3 914.3</u>	<u>5 389.7</u>	<u>7 639.2</u>	<u>10 858.0</u>	<u>18 151.0</u>

Table 7

## CHILE: NET OPERATING SURPLUS BY KIND OF ECONOMIC ACTIVITY

(Millions of esudos)

Kind of economic activity	1960	1961	1962	1963	1964	1965	1966	1967	1968	1969	1970	1971	1972
Agriculture, forestry, hunting and fishing	239	265	262	409	694	872	1 125	1 652	1 593	2 281	3 078	4 355	5 922
Mining and quarrying	176	157	195	351	569	897	1 700	1 962	2 771	5 276	5 701	3 576	2 784
Manufacturing	454	517	703	1 093	1 789	2 331	3 114	4 258	6 296	8 771	12 763	9 457	22 827
Construction	65	86	119	186	262	374	446	519	666	838	1 125	2 531	4 313
Electricity, gas, water and sanitary services	8	16	15	20	38	63	70	96	94	220	187	-165	-359
Transport, storage and communication	70	51	79	81	128	172	212	236	233	455	346	485	2 270
Commerce, financial institutions and real estate	369	470	603	1 007	1 446	1 839	2 482	3 159	4 154	5 982	8 313	11 485	28 070
Wellings	23	146	145	203	229	168	208	207	118	116	-93	-426	-632
Public administration, defense and other services	120	160	196	295	367	478	650	990	1 133	1 704	2 215	4 941	8 019
<b>Total</b>	<b>1 524</b>	<b>1 868</b>	<b>2 217</b>	<b>3 585</b>	<b>5 522</b>	<b>7 194</b>	<b>10 007</b>	<b>13 062</b>	<b>17 058</b>	<b>25 643</b>	<b>33 635</b>	<b>36 232</b>	<b>73 214</b>





MEXICO



Table 1

## MEXICO: GROSS VALUE ADDED AT FACTOR COST BY KIND OF ECONOMIC ACTIVITY

(Millions of pesos)

Kind of economic activity	1960	1961	1962	1963	1964	1965	1966	1967	1968	1969	1970	1971	1972
Agriculture, forestry, hunting and fishing	23 881	25 956	28 727	30 005	32 582	35 700	37 204	39 929	40 601	42 972	47 226	48 261	52 652
Mining and quarrying	6 770	7 451	7 944	8 600	9 589	10 237	10 774	11 904	15 018	15 653	17 028	16 627	18 203
Manufacturing	27 983	29 441	31 861	35 557	41 175	45 997	52 204	59 134	72 676	81 748	92 275	101 497	115 617
Construction	6 105	5 491	5 891	8 373	9 100	10 055	13 004	15 576	16 103	19 022	21 401	21 507	27 308
Electricity, gas, water and sanitary services	1 293	1 445	1 783	2 309	2 706	3 131	3 464	3 836	4 315	4 792	5 371	5 767	6 304
Transport, storage and communication	4 894	5 093	5 294	5 787	6 433	6 887	7 324	7 873	8 692	9 474	10 369	11 422	13 630
Commerce, financial institutions and real estate	44 198	47 046	50 760	54 740	64 537	69 043	77 146	83 092	97 744	107 833	119 993	129 709	143 596
Hewllings	11 051	12 816	14 854	17 209	19 926	23 058	26 661	30 802	24 184	27 364	30 115	32 686	36 412
Public administration, defense and other services	18 002	20 220	22 674	26 088	29 743	33 131	38 210	43 625	44 006	47 711	54 348	62 279	72 878
<b>Total</b>	<b>144 177</b>	<b>154 959</b>	<b>169 788</b>	<b>188 668</b>	<b>215 791</b>	<b>237 239</b>	<b>265 991</b>	<b>295 771</b>	<b>323 339</b>	<b>356 569</b>	<b>398 126</b>	<b>429 755</b>	<b>486 600</b>

Table 2

## MEXICO: COMPENSATION OF EMPLOYERS BY KIND OF ECONOMIC ACTIVITY

(Millions of pesos)

Kind of economic activity	1960	1961	1962	1963	1964	1965	1966	1967	1968	1969	1970	1971	1972
Agriculture, forestry, hunting and fishing	5 456	6 182	7 002	7 964	9 039	10 294	11 638	13 204	14 607	15 841	18 597	18 819	22 409
Mining and quarrying	2 294	2 276	2 393	2 664	3 032	3 381	3 793	4 163	4 246	4 357	4 793	6 218	7 134
Manufacturing	11 407	12 493	13 684	15 188	17 223	19 798	22 248	25 313	27 794	31 185	34 304	37 846	43 411
Construction	3 796	3 568	3 773	4 988	4 798	5 686	6 749	7 550	8 290	9 301	10 231	11 357	13 349
Electricity, gas, water and sanitary services	768	842	983	1 169	1 399	1 554	1 682	1 720	1 892	2 100	2 310	2 565	2 861
Transport, storage and communication	3 233	3 585	3 819	4 164	4 519	4 963	5 413	5 940	6 534	7 253	7 978	9 018	10 094
Commerce, financial institutions and real estate	6 172	6 865	7 663	8 638	9 477	10 511	11 862	13 179	14 497	16 092	17 701	20 236	23 148
Billings	375	439	513	601	703	822	962	1 126	1 220	1 342	1 476	1 640	1 828
Public administration, defense and other services	13 417	14 717	16 443	18 691	20 961	23 046	26 341	29 522	33 179	35 719	39 291	43 451	48 127
<b>Total</b>	<b>46 918</b>	<b>50 967</b>	<b>56 273</b>	<b>64 087</b>	<b>71 151</b>	<b>79 995</b>	<b>90 688</b>	<b>101 717</b>	<b>112 259</b>	<b>123 190</b>	<b>136 681</b>	<b>151 150</b>	<b>172 361</b>

Table 3

## MEXICO: WAGES AND SALARIES BY KIND OF ECONOMIC ACTIVITY

(Millions of pesos)

Kind of economic activity	1960	1961	1962	1963	1964	1965	1966	1967	1968	1969	1970	1971	1972
Agriculture, forestry, hunting and fishing	5 429	6 145	6 960	7 917	8 976	10 161	11 545	13 097	14 489	15 713	18 444	18 665	22 225
Mining and quarrying	2 197	2 171	2 274	2 527	2 866	3 186	3 553	3 893	3 971	4 074	4 494	5 830	6 688
Manufacturing	11 115	12 143	13 276	14 714	16 659	19 119	21 400	24 338	26 723	29 984	33 029	36 437	41 794
Construction	3 732	3 507	3 701	4 887	4 698	5 560	6 579	7 358	8 079	9 064	9 983	11 082	13 025
Electricity, gas, water and sanitary services	736	807	942	1 120	1 340	1 489	1 611	1 648	1 813	2 012	2 210	2 454	2 737
Transport, storage and communication	3 150	3 492	3 705	4 034	4 371	4 792	5 212	5 711	6 282	6 973	7 682	8 683	9 719
Commerce, financial institutions and real estate	5 981	6 632	7 387	8 318	9 098	10 070	11 316	12 573	13 830	15 352	16 888	19 306	22 084
Dwellings	375	439	513	601	703	822	962	1 126	1 220	1 342	1 476	1 640	1 828
Public administration, defense and other services	13 057	14 279	15 919	18 066	20 218	22 174	25 260	28 266	31 767	34 199	37 420	41 379	45 831
<b>Total</b>	<b>45 772</b>	<b>49 615</b>	<b>54 677</b>	<b>62 184</b>	<b>68 929</b>	<b>77 373</b>	<b>87 438</b>	<b>98 010</b>	<b>108 174</b>	<b>118 713</b>	<b>131 626</b>	<b>145 476</b>	<b>165 931</b>

Table 4

## MEXICO: EMPLOYERS' SOCIAL SECURITY CONTRIBUTIONS BY KIND OF ECONOMIC ACTIVITY

(Millions of pesos)

Kind of economic activity	1960	1961	1962	1963	1964	1965	1966	1967	1968	1969	1970	1971	1972
Agriculture, forestry, hunting and fishing	27	37	42	47	63	73	93	107	118	128	153	154	184
Mining and quarrying	97	105	119	137	166	195	240	270	275	283	299	388	446
Manufacturing	292	350	408	474	564	679	848	975	1 071	1 201	1 275	1 409	1 617
Construction	64	61	72	101	100	126	170	192	211	237	248	275	324
Electricity, gas, water and sanitary services	32	35	41	49	59	65	71	72	79	88	100	111	124
Transport, storage and communication	83	93	114	130	148	171	201	229	252	280	296	335	375
Commerce, financial institutions and real estate	191	233	276	320	379	441	546	606	667	740	813	950	1 067
Buildings	-	-	-	-	-	-	-	-	-	-	-	-	-
Public administration, defense and other services	360	438	524	625	743	872	1 081	1 256	1 412	1 520	1 871	2 072	2 296
<b>Total</b>	<b>1 146</b>	<b>1 352</b>	<b>1 596</b>	<b>1 883</b>	<b>2 222</b>	<b>2 622</b>	<b>3 250</b>	<b>3 707</b>	<b>4 085</b>	<b>4 477</b>	<b>5 055</b>	<b>5 674</b>	<b>6 430</b>

Table 5

## MEXICO: GROSS OPERATING SURPLUS BY KIND OF ECONOMIC ACTIVITY

(Millions of pesos)

Kind of economic activity	1960	1961	1962	1963	1964	1965	1966	1967	1968	1969	1970	1971	1972
Agriculture, forestry, hunting and fishing	18 425	19 774	21 725	22 041	23 543	25 466	25 566	26 725	25 994	27 131	28 629	29 442	30 243
Mining and quarrying	4 476	5 175	5 551	5 936	6 557	6 856	6 981	7 741	10 772	11 296	12 235	10 409	11 069
Manufacturing	16 576	16 948	18 177	20 369	23 952	26 199	29 956	33 821	44 882	50 563	57 971	63 651	72 206
Construction	2 309	1 923	2 118	3 385	4 302	4 369	6 255	8 026	7 813	9 721	11 170	10 150	13 959
Electricity, gas, water and sanitary services	525	603	800	1 140	1 307	1 577	1 782	2 116	2 423	2 692	3 061	3 202	3 443
Transport, storage and communication	1 661	1 508	1 475	1 623	1 914	1 924	1 911	1 933	2 158	2 221	2 391	2 404	3 536
Commerce, financial institutions and real estate	38 026	40 181	43 097	46 102	55 060	58 532	65 284	69 913	83 247	91 741	102 292	109 473	120 448
Dwellings	10 676	12 377	14 341	16 608	19 223	22 236	25 699	29 676	22 964	26 022	28 639	31 046	34 584
Public administration, defense and other services	4 585	5 503	6 231	7 397	8 782	10 085	11 869	14 103	10 827	11 992	15 057	18 828	24 751
<u>Total</u>	<u>97 259</u>	<u>103 992</u>	<u>113 515</u>	<u>124 601</u>	<u>144 640</u>	<u>157 244</u>	<u>175 303</u>	<u>194 054</u>	<u>211 080</u>	<u>233 379</u>	<u>261 445</u>	<u>278 605</u>	<u>314 239</u>

Table 6

## MEXICO: DEPRECIATION BY KIND OF ECONOMIC ACTIVITY

(Millions of pesos)

Kind of economic activity	1960	1961	1962	1963	1964	1965	1966	1967	1968	1969	1970	1971	1972
Agriculture, forestry, hunting and fishing	739	758	841	874	1 048	1 192	1 322	1 397	1 421	1 504	1 613	1 628	1 751
Mining and quarrying	1 225	1 320	1 454	1 652	1 711	1 891	2 056	2 195	2 638	2 802	2 975	2 869	3 095
Manufacturing	3 196	3 291	3 484	3 600	3 847	4 323	5 107	5 852	7 135	8 093	8 916	9 687	10 872
Construction	50	56	57	55	60	66	76	86	89	105	115	114	142
Electricity, gas, water and sanitary services	453	496	594	761	930	1 096	1 230	1 331	1 497	1 663	1 819	1 929	2 077
Transport, storage and communication	439	458	494	500	549	595	660	729	805	877	937	1 019	1 199
Commerce, financial institutions and real estate	235	256	253	276	301	330	393	457	537	593	644	687	750
Dwellings	1 122	1 136	1 233	1 397	1 484	1 679	1 939	2 146	1 685	1 906	2 040	2 195	2 409
Public administration, defense and other services	181	183	197	229	240	262	324	362	365	396	440	498	575
<b>Total</b>	<b>7 640</b>	<b>7 954</b>	<b>8 607</b>	<b>9 244</b>	<b>10 170</b>	<b>11 442</b>	<b>13 107</b>	<b>14 495</b>	<b>16 282</b>	<b>17 939</b>	<b>19 507</b>	<b>20 626</b>	<b>22 870</b>

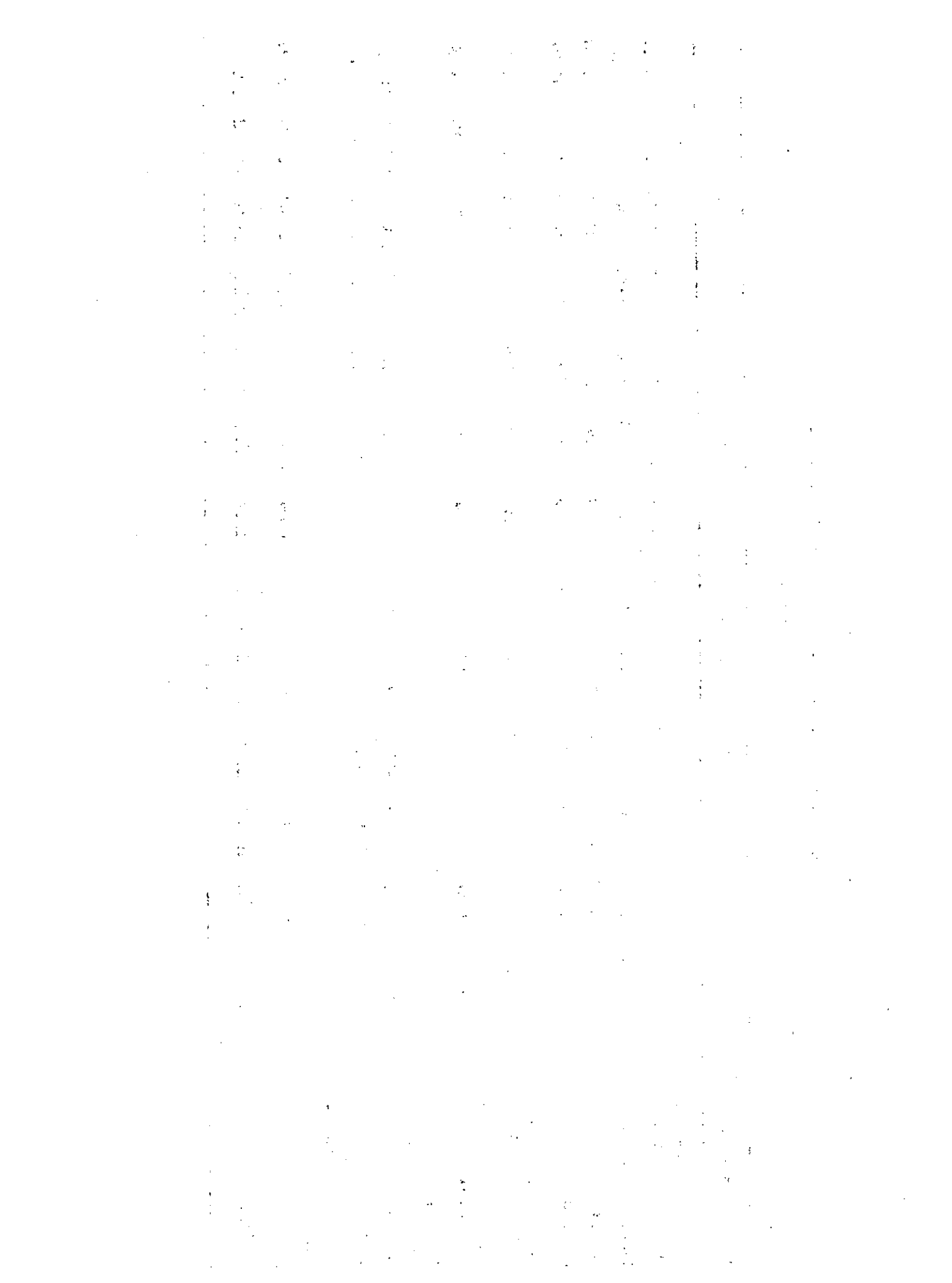


Table 7

## MEXICO: NET OPERATING SURPLUS BY KIND OF ECONOMIC ACTIVITY

(Millions of pesos)

Kind of economic activity	1960	1961	1962	1963	1964	1965	1966	1967	1968	1969	1970	1971	1972
Agriculture, forestry, hunting and fishing	17 686	19 016	20 884	21 167	22 495	24 274	24 244	25 328	24 573	25 627	27 016	27 814	28 492
Mining and quarrying	3 251	3 855	4 097	4 284	4 846	4 965	4 925	5 606	8 084	8 494	9 260	7 540	7 974
Manufacturing	13 380	13 657	14 693	16 769	20 105	21 876	24 849	27 969	37 687	42 470	49 055	53 964	61 334
Construction	2 259	1 867	2 061	3 330	4 242	4 303	6 179	7 940	7 724	9 616	11 055	10 036	13 817
Electricity, gas, water and sanitary services	72	107	206	379	377	481	552	785	926	1 029	1 242	1 273	1 366
Transport, storage and communication	1 222	1 050	981	1 123	1 365	1 329	1 251	1 204	1 353	1 344	1 454	1 385	2 337
Commerce, financial institutions and real estate	37 791	39 925	42 844	45 826	54 759	58 194	64 891	69 456	82 710	91 148	101 648	108 786	119 698
Dwellings	9 554	11 241	13 108	15 211	17 739	20 557	23 760	27 530	21 279	24 116	26 591	28 851	32 175
Public administration, defense and other services	4 404	5 320	6 034	7 168	8 542	9 823	11 545	13 741	10 462	11 596	14 617	18 330	24 176
<u>Total</u>	<u>89 619</u>	<u>96 038</u>	<u>104 908</u>	<u>115 257</u>	<u>134 470</u>	<u>145 802</u>	<u>162 196</u>	<u>179 552</u>	<u>194 798</u>	<u>215 440</u>	<u>241 938</u>	<u>257 972</u>	<u>291 369</u>



PANAMA



Table 1

## PANAMA: GROSS VALUE ADDED AT FACTOR COST BY KIND OF ECONOMIC ACTIVITY

(Millions of balboas)

Kind of economic activity	1960	1961	1962	1963	1964	1965	1966	1967	1968	1969	1970	1971	1972
Agriculture, forestry, hunting and fishing	94.8	111.1	114.9	125.2	137.7	156.8	166.7	180.0	195.0	198.9	198.8	208.6	225.7
Mining and quarrying	1.1	1.2	1.5	1.8	1.8	1.9	2.0	2.2	2.1	2.6	2.5	2.8	2.7
Manufacturing	48.9	55.4	67.8	79.4	86.4	91.7	99.8	113.3	126.5	137.8	152.5	170.0	188.9
Construction	22.8	29.3	28.6	32.1	30.7	34.8	40.4	46.9	50.1	50.8	60.4	73.9	85.1
Electricity, gas, water and sanitary services	8.4	8.7	9.5	10.3	11.2	11.9	12.7	13.8	16.8	18.8	19.0	21.9	27.0
Transport, storage and communication	18.8	21.0	21.9	24.3	27.5	30.1	33.5	37.4	38.6	47.9	54.3	61.6	73.1
Commerce, financial institutions and real estate	45.2	48.1	55.2	67.1	74.1	78.5	84.5	94.0	99.7	119.0	135.1	149.0	170.0
Buildings	31.4	33.4	33.8	36.3	36.7	39.0	42.5	46.3	49.5	51.2	57.0	63.7	73.2
Public administration, defense and other services	79.4	83.4	90.6	99.4	103.0	113.1	125.2	143.6	151.5	169.5	203.4	225.7	255.1
Canal Zone	30.4	33.6	39.8	43.0	48.6	53.1	58.1	63.8	70.0	77.5	79.3	84.0	86.8
<b>Total</b>	<b>381.2</b>	<b>425.2</b>	<b>463.6</b>	<b>518.9</b>	<b>557.7</b>	<b>610.9</b>	<b>665.4</b>	<b>741.3</b>	<b>799.8</b>	<b>874.0</b>	<b>962.3</b>	<b>1,061.2</b>	<b>1,187.0</b>

Table 2

## PANAMA: COMPENSATION OF EMPLOYEES BY KIND OF ECONOMIC ACTIVITY

(Millions of balboas)

Kind of economic activity	1960	1961	1962	1963	1964	1965	1966	1967	1968	1969	1970	1971	1972
Agriculture, forestry, hunting and fishing	...	...	...	28.4	27.9	27.6	27.4	28.3	30.3	30.9	36.8	42.5	46.7
Mining and quarrying	...	...	...	-	0.1	0.1	0.2	0.2	0.3	0.5	0.7	0.7	0.9
Manufacturing	...	...	...	30.0	32.2	36.7	41.0	47.4	57.2	60.1	78.5	89.5	100.5
Construction	...	...	...	14.0	15.0	18.8	22.7	26.9	29.7	31.8	35.5	43.0	45.2
Electricity, gas, water and sanitary services	...	...	...	4.1	4.1	6.1	8.2	9.2	9.8	10.8	8.9	10.0	11.1
Transport, storage and communication	...	...	...	12.8	14.1	14.5	15.1	14.7	16.9	21.1	16.2	18.3	20.4
Commerce, financial institutions and real estate	...	...	...	39.3	41.8	43.1	44.6	55.3	52.5	70.2	80.1	90.9	101.7
Dwellings	...	...	...	-	-	-	-	-	-	-	-	-	-
Public administration, defense and other services	...	...	...	84.6	88.1	89.9	91.6	111.9	106.9	130.7	155.8	172.4	198.0
Canal Zone	...	...	...	41.6	47.1	51.6	56.7	61.5	68.4	75.4	77.7	82.4	85.2
<u>Total</u>	...	...	...	<u>254.8</u>	<u>270.4</u>	<u>288.4</u>	<u>307.5</u>	<u>355.4</u>	<u>372.0</u>	<u>431.5</u>	<u>490.2</u>	<u>549.7</u>	<u>609.7</u>

Note: For the years 1960-1962 information available is incomplete.

Table 3

## PANAMA: WAGES AND SALARIES BY KIND OF ECONOMIC ACTIVITY

(Millions of balboas)

Kind of economic activity	1960	1961	1962	1963	1964	1965	1966	1967	1968	1969	1970	1971	1972
Agriculture, forestry, hunting and fishing	...	...	...	28.2	27.7	27.4	27.2	28.1	30.1	30.7	36.5	42.2	46.3
Mining and quarrying	...	...	...	-	0.1	0.1	0.2	0.2	0.3	0.5	0.6	0.7	0.8
Manufacturing	...	...	...	29.1	31.1	35.4	39.4	45.3	54.9	57.8	75.9	86.0	96.2
Construction	...	...	...	13.7	14.7	18.4	22.2	26.1	28.9	31.0	34.6	41.9	43.9
Electricity, gas, water and sanitary services	...	...	...	3.9	3.9	5.8	7.7	8.7	9.2	10.2	8.1	9.1	10.1
Transport, storage and communication	...	...	...	12.4	13.6	14.0	14.5	14.2	16.2	20.3	15.4	17.3	19.3
Commerce, financial institutions and real estate	...	...	...	37.9	40.0	41.3	42.6	52.5	50.0	67.1	76.0	86.3	96.4
Dwellings	...	...	...	-	-	-	-	-	-	-	-	-	-
Public administration, defense and other services	...	...	...	82.1	85.1	86.7	88.1	107.8	102.6	125.6	149.5	164.7	189.7
Canal Zone	...	...	...	40.0	45.1	49.3	53.9	59.1	64.8	71.8	73.4	77.7	79.6
<u>Total</u>	...	...	...	<u>247.4</u>	<u>261.3</u>	<u>278.4</u>	<u>295.8</u>	<u>342.0</u>	<u>357.0</u>	<u>415.0</u>	<u>470.0</u>	<u>525.9</u>	<u>582.3</u>

Note: For the years 1960-1962 information available is incomplete.

Table 4

## PANAMA: EMPLOYERS' SOCIAL SECURITY CONTRIBUTIONS BY KIND OF ECONOMIC ACTIVITY

(Millions of balboas)

Kind of economic activity	1960	1961	1962	1963	1964	1965	1966	1967	1968	1969	1970	1971	1972
Agriculture, forestry, hunting and fishing	...	...	...	0.160	0.181	0.161	0.196	0.214	0.211	0.203	0.283	0.327	0.373
Mining and quarrying	...	...	...	0.004	0.006	0.008	0.010	0.015	0.016	0.026	0.043	0.043	0.063
Manufacturing	...	...	...	0.906	1.114	1.300	1.573	2.073	2.323	2.281	2.605	3.464	4.322
Construction	...	...	...	0.272	0.337	0.406	0.533	0.755	0.775	0.776	0.919	1.113	1.265
Electricity, gas, water and sanitary services	...	...	...	0.207	0.237	0.319	0.494	0.529	0.584	0.604	0.784	0.881	0.978
Transport, storage and communication	...	...	...	0.377	0.479	0.515	0.579	0.540	0.685	0.802	0.907	1.025	1.142
Commerce, financial institutions and real estate	...	...	...	1.449	1.765	1.822	2.046	2.803	2.467	3.092	4.059	4.606	5.341
Dwellings	...	...	...	-	-	-	-	-	-	-	-	-	-
Public administration, defense and other services	...	...	...	2.500	2.992	3.179	3.519	4.110	4.339	5.133	6.260	7.682	8.281
Canal Zone	...	...	...	1.625	1.989	2.290	2.750	2.361	3.600	3.583	4.340	4.659	5.635
<u>Total</u>	...	...	...	<u>7.500</u>	<u>9.100</u>	<u>10.000</u>	<u>11.700</u>	<u>13.400</u>	<u>15.000</u>	<u>16.500</u>	<u>20.200</u>	<u>23.800</u>	<u>27.400</u>

Note: For the years 1960-1962 information available is incomplete.



Table 5

## PANAMA: GROSS OPERATING SURPLUS BY KIND OF ECONOMIC ACTIVITY

(Millions of balboas)

Kind of economic activity	1960	1961	1962	1963	1964	1965	1966	1967	1968	1969	1970	1971	1972
Agriculture, forestry, hunting and fishing	...	...	...	96.8	109.8	129.2	139.3	151.7	164.7	168.0	162.0	166.1	179.0
Mining and quarrying	...	...	...	1.8	1.7	1.8	1.8	2.0	1.8	2.1	1.8	2.1	1.8
Manufacturing	...	...	...	49.4	54.2	55.0	58.8	65.9	69.3	77.7	74.0	80.5	87.8
Construction	...	...	...	18.1	15.7	16.0	17.7	20.0	20.4	19.0	24.9	30.9	39.9
Electricity, gas, water and sanitary services	...	...	...	6.2	7.1	5.8	4.5	4.6	7.0	8.0	10.1	11.9	15.9
Transport, storage and communication	...	...	...	11.5	13.4	15.6	18.4	22.7	21.7	26.8	38.1	43.3	52.7
Commerce, financial institutions and real estate	...	...	...	27.8	32.3	35.4	39.9	38.7	47.2	48.8	55.0	58.1	68.3
Banking	...	...	...	36.3	36.7	39.0	42.5	46.3	49.5	51.2	57.0	63.7	73.2
Public administration, defense and other services	...	...	...	14.8	14.9	23.2	33.6	31.7	44.6	38.8	47.6	53.3	57.1
Canal Zone	...	...	...	1.4	1.5	1.5	1.4	2.3	1.6	2.1	1.6	1.6	1.6
<b>Total</b>	...	...	...	<u>264.1</u>	<u>287.3</u>	<u>322.5</u>	<u>357.9</u>	<u>385.9</u>	<u>427.8</u>	<u>442.5</u>	<u>472.1</u>	<u>511.5</u>	<u>577.3</u>

Note: For the years 1960-1962 information available is incomplete.

Table 6

## PANAMA: DEPRECIATION BY KIND OF ECONOMIC ACTIVITY

(Millions of balboas)

Kind of economic activity	1960	1961	1962	1963	1964	1965	1966	1967	1968	1969	1970	1971	1972
Agriculture, forestry, hunting and fishing	6.0	7.0	7.9	8.5	9.2	10.7	11.2	12.4	13.3	13.6	12.9	13.3	14.3
Mining and quarrying	0.2	0.2	0.2	0.3	0.3	0.3	0.3	0.4	0.3	0.4	0.4	0.4	0.4
Manufacturing	7.1	8.1	10.7	12.5	13.4	14.4	15.5	18.0	19.9	21.8	22.9	25.5	28.1
Construction	2.8	3.6	3.9	4.3	4.0	4.7	5.4	6.3	6.7	6.8	7.7	9.5	10.8
Electricity, gas, water and sanitary services	1.9	1.9	2.4	2.5	2.8	2.9	3.1	3.5	4.2	4.7	4.5	5.2	6.4
Transport, storage and communication	3.9	4.4	4.9	5.4	6.1	6.7	7.4	8.5	8.7	10.8	11.6	13.2	15.6
Commerce, financial institutions and real estate	2.8	3.0	3.8	4.6	4.9	5.3	5.7	6.4	6.8	8.1	8.8	9.7	11.1
Wellings	6.1	6.5	7.1	7.7	7.5	8.2	8.8	9.8	15.6	16.2	22.1	24.7	28.3
Public administration, defense and other services	1.5	1.7	2.1	2.2	2.3	2.5	2.6	3.1	3.1	3.6	4.0	4.4	5.0
Canal Zone	-	-	-	-	-	0.1	0.1	0.1	0.1	0.2	0.2	0.3	0.3
<u>Total</u>	<u>32.3</u>	<u>36.4</u>	<u>43.0</u>	<u>48.0</u>	<u>50.5</u>	<u>55.8</u>	<u>60.1</u>	<u>68.5</u>	<u>78.7</u>	<u>86.2</u>	<u>95.1</u>	<u>106.2</u>	<u>120.3</u>

Note: For the year 1960-1962 information available is incomplete.

Table 7

## PANAMA: NET OPERATING SURPLUS BY KIND OF ECONOMIC ACTIVITY

(Millions of balboas)

Kind of economic activity	1960	1961	1962	1963	1964	1965	1966	1967	1968	1969	1970	1971	1972
Agriculture, forestry, hunting and fishing	...	...	...	88.3	100.6	118.5	128.1	139.3	151.4	154.4	149.1	152.8	164.7
Mining and quarrying	...	...	...	1.5	1.4	1.5	1.5	1.6	1.5	1.7	1.4	1.7	1.4
Manufacturing	...	...	...	36.9	40.8	40.6	43.3	47.9	49.4	55.9	51.1	55.0	59.7
Construction	...	...	...	13.8	11.7	11.3	12.3	13.7	13.7	12.2	17.2	21.4	29.1
Electricity, gas, water and sanitary services	...	...	...	3.7	4.3	2.9	1.4	1.1	2.8	3.3	5.6	6.7	9.5
Transport, storage and communication	...	...	...	6.1	7.3	8.9	11.0	14.2	13.0	16.0	26.5	30.1	37.1
Commerce, financial institutions and real estate	...	...	...	23.2	27.4	30.1	34.2	32.3	40.4	40.7	46.2	48.4	57.2
Hotellings	...	...	...	28.6	29.2	30.8	33.7	36.5	33.9	35.0	34.9	39.0	44.9
Public administration, defense and other services	...	...	...	12.6	12.6	20.7	31.0	28.6	41.5	35.2	43.6	48.9	52.1
Colonial Zone	...	...	...	1.4	1.5	1.4	1.3	2.2	1.5	1.9	1.4	1.3	1.3
<u>Total</u>	...	...	...	<u>216.1</u>	<u>236.8</u>	<u>266.7</u>	<u>297.8</u>	<u>317.4</u>	<u>349.1</u>	<u>356.3</u>	<u>377.0</u>	<u>405.3</u>	<u>457.0</u>

Note: For the years 1960-1962 information available is incomplete.

1. The first part of the document discusses the importance of maintaining accurate records of all transactions and activities. It emphasizes that this is essential for ensuring transparency and accountability in the organization's operations.

2. The second part of the document outlines the various methods and tools used to collect and analyze data. It highlights the need for consistent data collection procedures and the use of advanced analytical techniques to derive meaningful insights from the data.

3. The third part of the document focuses on the role of technology in data management and analysis. It discusses how modern software solutions can streamline data collection, storage, and processing, thereby improving efficiency and reducing the risk of errors.

4. The fourth part of the document addresses the challenges associated with data security and privacy. It stresses the importance of implementing robust security measures to protect sensitive information and ensure compliance with relevant regulations.

5. The fifth part of the document provides a detailed overview of the data collection process, from identifying the data sources to the final reporting and analysis stages. It includes a flowchart illustrating the sequential steps involved in this process.

6. The sixth part of the document discusses the importance of data quality and the steps taken to ensure that the collected data is accurate, complete, and reliable. It mentions the use of validation checks and regular audits to maintain high standards of data integrity.

7. The seventh part of the document explores the various applications of data analysis in different business contexts. It provides examples of how data insights can be used to optimize operations, improve customer service, and identify new market opportunities.

8. The eighth part of the document concludes by summarizing the key findings and recommendations. It reiterates the importance of a data-driven approach and encourages the organization to continue investing in data management and analysis capabilities.

1. The first part of the document discusses the importance of maintaining accurate records of all transactions and activities. It emphasizes that this is essential for ensuring transparency and accountability in the organization's operations.

PERU



Table 1

## PERU: GROSS VALUE ADDED AT FACTOR COST BY KIND OF ECONOMIC ACTIVITY

(Millions of soles)

Kind of economic activity	1960	1961	1962	1963	1964	1965	1966	1967	1968	1969	1970	1971	1972
Agriculture, forestry, hunting and fishing	12 601	14 172	15 426	15 268	17 633	19 974	23 255	26 835	30 589	33 018	41 169	42 410	45 291
Mining and quarrying	4 717	5 022	5 281	5 646	6 817	8 501	11 857	13 043	15 247	15 791	17 179	14 761	18 842
Manufacturing	9 337	10 487	12 154	12 605	14 896	17 066	19 155	24 020	30 077	33 288	42 228	46 433	49 737
Construction	2 051	2 242	2 668	2 897	3 887	4 901	5 687	7 563	8 104	9 413	9 954	11 328	13 523
Electricity, gas, water and sanitary services	352	402	516	626	684	951	1 283	1 668	2 171	2 438	2 667	2 840	2 977
Transport, storage and communication	2 248	2 527	3 069	3 313	4 110	4 687	5 336	6 680	8 726	9 377	11 265	13 207	14 605
Commerce, financial institutions and real estate	7 857	8 907	11 581	14 376	16 244	18 403	21 936	22 376	25 670	29 068	34 507	41 958	47 177
Dwellings	3 619	4 007	4 318	4 629	5 150	6 077	6 687	7 366	8 886	9 578	9 840	10 889	11 918
Public administration, defense and other services	10 057	11 086	12 815	14 630	18 679	23 523	28 172	33 611	39 565	40 773	46 422	53 592	60 398
<u>Total</u>	<u>52 839</u>	<u>58 852</u>	<u>67 828</u>	<u>73 990</u>	<u>88 100</u>	<u>104 083</u>	<u>123 368</u>	<u>143 162</u>	<u>169 035</u>	<u>182 744</u>	<u>215 231</u>	<u>237 418</u>	<u>264 468</u>

Table 2

## PERU: COMPENSATION OF EMPLOYEES BY KIND OF ECONOMIC ACTIVITY

(Millions of soles)

Kind of economic activity	1960	1961	1962	1963	1964	1965	1966	1967	1968	1969	1970
Agriculture, forestry, hunting and fishing	4 251	4 928	5 244	5 484	5 829	7 119	8 143	8 796	9 999	10 777	11 548
Mining and quarrying	1 498	1 830	2 150	2 262	2 570	2 757	3 062	3 783	4 464	4 883	5 321
Manufacturing	3 845	4 249	5 021	5 740	6 645	7 950	8 924	10 911	13 500	14 956	16 466
Construction	1 169	1 274	1 523	1 639	2 231	2 758	3 299	4 424	4 840	5 314	5 808
Electricity, gas, water and sanitary services	175	203	265	326	359	499	614	777	982	1 103	1 210
Transport, storage and communication	1 220	1 348	1 607	1 709	2 033	2 349	2 799	3 680	4 789	5 260	5 733
Commerce, financial institutions and real estate	2 765	3 139	3 687	4 412	5 026	5 640	6 661	8 102	9 864	10 958	12 101
Dwellings	-	-	-	-	-	-	-	-	-	-	-
Public administration, defense and other services	7 337	8 367	9 284	10 747	14 012	17 145	20 348	23 496	26 508	28 921	32 521
<u>Total</u>	<u>22 260</u>	<u>25 338</u>	<u>28 781</u>	<u>32 319</u>	<u>38 705</u>	<u>46 217</u>	<u>53 850</u>	<u>63 969</u>	<u>74 946</u>	<u>82 172</u>	<u>90 708</u>



Table 3

## PERU: WAGES AND SALARIES BY KIND OF ECONOMIC ACTIVITY

(Millions of soles)

Kind of economic activity	1960	1961	1962	1963	1964	1965	1966	1967	1968	1969	1970
Agriculture, forestry, hunting and fishing	4 236	4 911	5 225	5 452	5 796	7 068	8 083	8 737	9 933	10 705	11 463
Mining and quarrying	1 452	1 776	2 082	2 150	2 445	2 589	2 869	3 569	4 210	4 600	4 937
Manufacturing	3 775	4 176	4 929	5 575	6 456	7 667	8 596	10 550	13 052	14 451	15 862
Construction	1 155	1 260	1 505	1 607	2 190	2 694	3 219	4 328	4 735	5 196	5 668
Electricity, gas, water and sanitary services	169	197	257	310	341	469	575	733	926	1 039	1 134
Transport, storage and communication	1 198	1 325	1 578	1 660	1 976	2 266	2 696	3 558	4 630	5 082	5 522
Commerce, financial institutions and real estate	2 704	3 073	3 603	4 256	4 851	5 393	6 361	7 773	9 463	10 503	11 557
Dwellings	-	-	-	-	-	-	-	-	-	-	-
Public administration, defense and other service	7 204	8 222	9 112	10 437	13 615	16 534	19 601	22 719	25 630	27 941	31 330
<u>Total</u>	<u>21 893</u>	<u>24 940</u>	<u>28 221</u>	<u>31 447</u>	<u>37 670</u>	<u>44 680</u>	<u>52 000</u>	<u>61 967</u>	<u>72 579</u>	<u>79 517</u>	<u>87 523</u>

Table 4

## PERU: EMPLOYERS' SOCIAL SECURITY CONTRIBUTIONS BY KIND OF ECONOMIC ACTIVITY

(Millions of soles)

Kind of economic activity	1960	1961	1962	1963	1964	1965	1966	1967	1968	1969	1970
Agriculture, forestry, hunting and fishing	15	17	19	32	33	51	60	59	66	72	85
Mining and quarrying	46	54	68	112	125	168	193	214	254	283	334
Manufacturing	70	73	92	165	189	283	328	361	448	505	604
Construction	14	14	18	32	41	64	80	96	105	118	140
Electricity, gas, water and sanitary services	6	6	8	16	18	30	39	44	56	64	76
Transport, storage and communication	22	23	29	49	57	83	103	122	159	178	211
Commerce, financial institutions and real estate	61	66	84	156	175	247	300	329	401	455	544
Dwellings	-	-	-	-	-	-	-	-	-	-	-
Public administration, defense and other services	139	145	172	310	397	611	747	777	878	980	1 191
<u>Total</u>	<u>367</u>	<u>398</u>	<u>490</u>	<u>872</u>	<u>1 035</u>	<u>1 537</u>	<u>1 850</u>	<u>2 002</u>	<u>2 357</u>	<u>2 655</u>	<u>3 185</u>

Table 5

## PERU: GROSS OPERATING SURPLUS BY KIND OF ECONOMIC ACTIVITY

(Millions of soles)

Kind of economic activity	1960	1961	1962	1963	1964	1965	1966	1967	1968	1969	1970
Agriculture, forestry, hunting and fishing	8 350	9 244	10 182	9 784	11 804	12 855	15 112	18 039	20 590	22 241	29 621
Mining and quarrying	3 219	3 192	3 131	3 384	4 247	5 744	8 795	9 260	10 783	10 908	11 858
Manufacturing	5 492	6 238	7 133	6 865	8 251	9 116	10 231	13 109	16 577	18 332	25 762
Construction	882	968	1 145	1 258	1 656	2 143	2 388	3 139	3 264	4 099	4 146
Electricity, gas, water and sanitary services	177	199	251	300	325	452	669	891	1 189	1 335	1 457
Transport, storage and communication	1 028	1 179	1 462	1 604	2 077	2 338	2 537	3 000	3 937	4 117	5 532
Commerce, financial institutions and real estate	5 092	5 768	7 824	9 964	11 218	12 763	15 275	14 274	15 806	18 110	22 406
Dwellings	3 619	4 007	4 318	4 629	5 150	6 077	6 687	7 366	8 886	9 578	9 840
Public administration, defense and other services	2 720	2 719	3 531	3 883	4 667	6 378	7 824	10 115	13 057	11 852	13 901
<u>Total</u>	<u>30 579</u>	<u>33 514</u>	<u>39 047</u>	<u>41 671</u>	<u>49 395</u>	<u>57 866</u>	<u>69 518</u>	<u>79 193</u>	<u>94 089</u>	<u>100 572</u>	<u>124 523</u>

Table 6

## PERU: DEPRECIATION BY KIND OF ECONOMIC ACTIVITY

(Millions of soles)

Kind of economic activity	1960	1961	1962	1963	1964	1965	1966	1967	1968	1969	1970	1971	1972
Agriculture, forestry, hunting and fishing	347	412	413	501	510	562	834	836	894	952	1 040	1 215	1 295
Mining and quarrying	973	1 007	1 113	1 259	1 260	1 520	2 001	2 681	4 102	4 372	4 776	5 580	5 947
Manufacturing	810	912	1 050	1 163	1 229	1 827	2 163	2 608	3 629	3 869	4 226	4 938	5 263
Construction	85	98	117	125	167	208	273	459	524	559	608	710	757
Electricity, gas, water and sanitary services	48	55	66	72	73	85	76	258	364	436	438	513	548
Transport, storage and communication	172	204	239	270	305	357	400	618	853	910	992	1 159	1 235
Commerce, financial institutions and real estate	548	555	700	772	953	1 015	1 244	1 199	1 522	1 621	1 770	2 068	2 204
Savings	162	188	266	376	418	494	543	598	722	769	834	974	1 038
Public administration, defense and other services	137	143	157	186	260	302	312	405	474	506	550	643	685
<u>Total</u>	<u>3 282</u>	<u>3 574</u>	<u>4 121</u>	<u>4 724</u>	<u>5 175</u>	<u>6 370</u>	<u>7 846</u>	<u>9 662</u>	<u>13 084</u>	<u>13 994</u>	<u>15 234</u>	<u>17 800</u>	<u>18 972</u>

Table 7

## PERU: NET OPERATING SURPLUS BY KIND OF ECONOMIC ACTIVITY

(Millions of soles)

Kind of economic activity	1960	1961	1962	1963	1964	1965	1966	1967	1968	1969	1970
Agriculture, forestry, hunting and fishing	8 003	8 832	9 769	9 283	11 294	12 293	14 278	17 203	19 696	21 289	28 581
Mining and quarrying	2 246	2 185	2 018	2 125	2 987	4 224	6 794	6 579	6 681	6 536	7 082
Manufacturing	4 682	5 326	6 083	5 702	7 022	7 289	8 068	10 501	12 948	14 463	21 536
Construction	797	870	1 028	1 133	1 489	1 935	2 115	2 680	2 740	3 540	3 538
Electricity, gas, water and sanitary services	129	144	185	228	252	367	593	633	825	899	1 019
Transport, storage and communication	856	975	1 223	1 334	1 772	1 981	2 137	2 382	3 084	3 207	4 540
Commerce, financial institutions and real estate	4 544	5 213	7 194	9 192	10 265	11 748	14 031	13 075	14 284	16 489	20 636
Dwellings	3 457	3 819	4 052	4 253	4 732	5 583	6 144	6 768	8 164	8 809	9 006
Public administration, defense and other services	2 583	2 576	3 374	3 697	4 407	6 076	7 512	9 710	12 583	11 346	13 351
<u>Total</u>	<u>27 297</u>	<u>29 940</u>	<u>34 926</u>	<u>36 947</u>	<u>44 220</u>	<u>51 496</u>	<u>61 672</u>	<u>69 531</u>	<u>81 005</u>	<u>86 578</u>	<u>109 289</u>

1  
03  
1

1. The first part of the document discusses the importance of maintaining accurate records of all transactions and activities. It emphasizes that proper record-keeping is essential for transparency and accountability, particularly in financial matters. The text notes that without clear records, it becomes difficult to track expenses, revenues, and other critical data points over time.

2. The second section focuses on the role of technology in streamlining record-keeping processes. It highlights how digital tools and software solutions can significantly reduce the risk of human error and improve the efficiency of data collection and storage. The document suggests that organizations should invest in reliable technology to ensure their records are secure, accessible, and easy to manage.

3. The third part of the document addresses the challenges associated with maintaining records in a rapidly changing environment. It points out that new regulations, industry standards, and technological advancements can create complex and evolving requirements for record-keeping. Organizations must stay informed and adapt their practices to meet these changing demands effectively.

4. The final section discusses the importance of training and education for staff involved in record-keeping. It stresses that even the most advanced technology is only as good as the people using it. Regular training and updates are necessary to ensure that all personnel understand the correct procedures and the importance of maintaining accurate records.

URUGUAY





Table 1

## URUGUAY: GROSS VALUE ADDED AT FACTOR COST BY KIND OF ECONOMIC ACTIVITY

(Millions of pesos)

Kind of economic activity	1960	1961	1962	1963	1964	1965	1966	1967	1968	1969	1970
Agriculture, forestry, hunting and fishing	2 430	2 481	2 342	3 049	4 730	7 129	14 465	18 131	38 729	53 063	60 316
Mining and quarrying	...	...	...	...	...	...	...	...	...	...	...
Manufacturing <sup>a/</sup>	3 313	4 217	4 327	5 302	7 804	14 987	24 539	43 736	103 914	126 474	145 092
Construction	...	...	...	...	...	...	...	...	...	...	...
Electricity, gas, water and sanitary services	186	273	318	436	545	818	1 176	2 352	4 638	6 565	7 920
Transport, storage and communication	943	1 299	1 518	1 769	2 619	3 746	7 903	12 742	28 879	40 035	44 246
Commerce, Financial institutions and real estate	2 696	3 218	3 583	3 919	5 596	8 751	16 255	29 094	59 760	79 919	91 604
Dwellings	771	864	1 008	1 151	1 299	1 706	2 420	3 472	12 011	20 903	27 436
Public administration, defense and other services	2 229	3 108	4 066	4 864	7 036	11 464	19 621	39 861	79 691	116 021	144 584
<b>Total</b>	<b>12 568</b>	<b>15 460</b>	<b>17 167</b>	<b>20 490</b>	<b>29 629</b>	<b>48 601</b>	<b>86 379</b>	<b>149 388</b>	<b>327 616</b>	<b>442 980</b>	<b>521 898</b>

<sup>a/</sup> Includes: Mining and quarrying and construction.

Table 2

## URUGUAY: COMPENSATION OF EMPLOYEES BY KIND OF ECONOMIC ACTIVITY

(Millions of pesos)

Kind of economic activity	1960	1961	1962	1963	1964	1965	1966	1967	1968	1969	1970
Agriculture, forestry, hunting and fishing	229	459	591	631	838	986	1 995	3 427	7 906	10 502	12 613
Mining and quarrying	...	...	...	...	...	...	...	...	...	...	...
Manufacturing <sup>a/</sup>	2 056	2 680	3 018	3 512	4 851	7 587	13 201	24 995	53 721	72 798	87 068
Construction	...	...	...	...	...	...	...	...	...	...	...
Electricity, gas, water and sanitary services	129	206	258	391	414	650	968	2 027	4 088	6 087	7 283
Transport, storage and communication	579	856	1 007	1 290	1 968	2 781	5 287	8 730	16 398	23 906	28 549
Commerce, financial institutions and real estate	729	1 055	1 336	1 681	2 376	3 460	6 125	10 882	22 385	31 900	38 232
Dwellings	47	62	77	91	105	147	253	463	842	1 093	1 312
Public administration, defense and other services	1 601	2 289	3 104	3 704	5 332	9 008	14 829	29 595	59 262	88 275	106 062
<u>Total</u>	<u>5 370</u>	<u>7 607</u>	<u>9 391</u>	<u>11 300</u>	<u>15 884</u>	<u>24 619</u>	<u>42 658</u>	<u>80 119</u>	<u>164 602</u>	<u>234 561</u>	<u>281 119</u>

<sup>a/</sup> Includes: Mining and quarrying and construction.

Table 3

## URUGUAY: WAGES AND SALARIES BY KIND OF ECONOMIC ACTIVITY

(Millions of peses)

Kind of economic activity	1960	1961	1962	1963	1964	1965	1966	1967	1968	1969	1970
Agriculture, forestry, hunting and fishing	203	426	548	574	755	843	1 799	3 070	7 176	9 406	11 390
Mining and quarrying	...	...	...	...	...	...	...	...	...	...	...
Manufacturing <sup>a/</sup>	1 800	2 295	2 509	2 873	4 130	6 482	11 285	21 266	45 674	61 341	74 281
Construction	...	...	...	...	...	...	...	...	...	...	...
Electricity, gas, water and sanitary services	111	175	214	324	339	549	790	1 734	3 450	5 164	6 253
Transport, storage and communication	495	725	829	1 062	1 603	2 331	4 280	7 425	13 484	19 931	24 516
Commerce, financial institutions and real estate	633	907	1 120	1 397	1 971	2 946	5 051	9 390	19 296	27 466	32 880
Dwellings	42	55	67	79	91	130	217	412	742	967	1 171
Public administration, defense and other services	1 456	2 068	2 756	3 286	4 697	8 081	13 014	26 801	53 195	79 497	96 266
<u>Total</u>	<u>4 740</u>	<u>6 651</u>	<u>8 072</u>	<u>9 525</u>	<u>13 586</u>	<u>21 362</u>	<u>36 436</u>	<u>70 098</u>	<u>142 977</u>	<u>203 772</u>	<u>246 757</u>

<sup>a/</sup> Includes: Mining and quarrying and construction.

1  
1  
1

Table 4

## URUGUAY: EMPLOYERS' SOCIAL SECURITY CONTRIBUTIONS BY KIND OF ECONOMIC ACTIVITY

(Millions of pesos)

Kind of economic activity	1960	1961	1962	1963	1964	1965	1966	1967	1968	1969	1970
Agriculture, forestry, hunting and fishing	26	39	43	57	83	143	196	357	770	1 096	1 223
Mining and quarrying	...	...	...	...	...	...	...	...	...	...	...
Manufacturing <sup>a/</sup>	256	385	509	639	721	1 105	1 916	3 729	8 047	11 457	12 787
Construction	...	...	...	...	...	...	...	...	...	...	...
Electricity, gas, water and sanitary services	18	31	44	67	75	101	178	293	638	923	1 030
Transport, storage and communication	84	131	178	228	365	450	1 007	1 305	2 914	3 975	4 033
Commerce, financial institutions and real estate	96	148	216	284	405	514	1 074	1 492	3 089	4 434	5 352
Dwellings	5	7	10	12	14	17	36	51	100	126	141
Public administration, defense and other services	145	221	348	418	635	927	1 815	2 794	6 067	8 778	9 796
<b>Total</b>	<b>630</b>	<b>956</b>	<b>1 348</b>	<b>1 705</b>	<b>2 298</b>	<b>3 257</b>	<b>6 222</b>	<b>10 021</b>	<b>21 625</b>	<b>30 789</b>	<b>34 362</b>

<sup>a/</sup>Includes: Mining and quarrying and construction.

Table 5

## URUGUAY: GROSS OPERATING SURPLUS BY KIND OF ECONOMIC ACTIVITY

(Millions of pesos)

Kind of economic activity	1960	1961	1962	1963	1964	1965	1966	1967	1968	1969	1970
Agriculture, forestry, hunting and fishing	2 201	2 022	1 751	2 418	3 892	6 143	12 470	14 704	30 823	42 561	47 703
Mining and quarrying	...	...	...	...	...	...	...	...	...	...	...
Manufacturing <sup>a/</sup>	1 257	1 537	1 309	1 790	2 953	7 400	11 338	18 741	50 193	53 676	58 024
Construction	...	...	...	...	...	...	...	...	...	...	...
Electricity, gas, water and sanitary services	57	67	60	45	131	168	208	325	550	478	637
Transport, storage and communication	364	443	511	479	651	965	2 616	4 012	12 475	16 129	16 397
Commerce, financial institutions and real estate	1 967	2 163	2 247	2 238	3 220	5 291	10 130	18 212	37 375	48 019	53 372
Dwellings	724	802	931	1 060	1 194	1 559	2 167	3 009	11 169	19 810	26 124
Public administration, defense and other services	628	819	562	1 160	1 704	2 456	4 792	10 266	20 429	27 746	38 522
<u>Total</u>	<u>7 198</u>	<u>7 853</u>	<u>7 574</u>	<u>9 190</u>	<u>13 745</u>	<u>23 982</u>	<u>43 721</u>	<u>69 269</u>	<u>163 024</u>	<u>208 419</u>	<u>240 779</u>

<sup>a/</sup> Includes: Mining and quarrying and construction.

Table 6

## URUGUAY: DEPRECIATION BY KIND OF ECONOMIC ACTIVITY

(Millions of pesos)

Kind of economic activity	1960	1961	1962	1963	1964	1965	1966	1967	1968	1969	1970
Agriculture, forestry, hunting and fishing	42	45	62	75	86	111	146	200	387	531	603
Mining and quarrying	...	...	...	...	...	...	...	...	...	...	...
Manufacturing <sup>a/</sup>	190	229	319	407	448	644	2 051	3 285	6 547	7 968	9 141
Construction	...	...	...	...	...	...	...	...	...	...	...
Electricity, gas, water and sanitary services	16	23	26	43	44	63	82	137	357	400	610
Transport, storage and communication	92	120	136	190	227	316	596	812	2 425	3 363	3 775
Commerce, financial institutions and real estate	73	81	87	115	133	202	336	504	1 374	1 838	2 107
Dwellings	81	86	97	118	121	154	196	351	1 081	1 881	2 469
Public administration, defense and other services	20	27	34	49	57	92	142	242	638	928	1 157
<u>Total</u>	<u>514</u>	<u>611</u>	<u>761</u>	<u>897</u>	<u>1 116</u>	<u>1 582</u>	<u>3 549</u>	<u>5 531</u>	<u>12 809</u>	<u>16 909</u>	<u>19 862</u>

<sup>a/</sup> Includes: Mining and quarrying and construction.

Table 7

## URUGUAY: NET OPERATING SURPLUS BY KIND OF ECONOMIC ACTIVITY

(Millions of pesos)

Kind of economic activity	1960	1961	1962	1963	1964	1965	1966	1967	1968	1969	1970
Agriculture, forestry, hunting and fishing	2 159	1 977	1 689	2 343	3 806	6 032	12 324	14 504	30 436	42 030	47 100
Mining and quarrying	...	...	...	...	...	...	...	...	...	...	...
Manufacturing <sup>a/</sup>	1 067	1 308	990	1 383	2 505	6 756	9 287	15 456	43 646	45 708	48 883
Construction	...	...	...	...	...	...	...	...	...	...	...
Electricity, gas, water and sanitary services	41	44	34	2	87	105	126	188	193	78	27
Transport, storage and communication	272	323	375	289	424	649	2 020	3 200	10 050	12 766	12 622
Commerce, financial institutions and real estate	1 894	2 082	2 160	2 123	3 087	5 089	9 794	17 708	36 001	46 181	51 265
Dwellings	643	716	834	1 042	1 073	1 405	1 971	2 658	10 088	17 929	23 655
Public administration, defense and other services	608	792	928	1 111	1 647	2 364	4 650	10 024	19 791	26 818	37 365
<u>Total</u>	<u>6 684</u>	<u>7 242</u>	<u>7 030</u>	<u>8 223</u>	<u>12 629</u>	<u>22 400</u>	<u>40 172</u>	<u>63 738</u>	<u>150 205</u>	<u>191 510</u>	<u>220 917</u>

<sup>a/</sup> Includes: Mining and quarrying and construction.

1. The first part of the document discusses the importance of maintaining accurate records of all transactions. It emphasizes that every entry should be supported by a valid receipt or invoice to ensure transparency and accountability. This is particularly crucial for businesses operating in highly regulated industries where compliance is a top priority.

2. In the second section, the author outlines the various methods used to collect and analyze data. This includes both traditional manual entry and modern automated systems. The text highlights the benefits of automation in reducing human error and increasing the speed of data processing. However, it also notes the need for regular system updates and security checks to protect sensitive information.

3. The third part of the document focuses on the integration of different data sources. It explains how data from various departments, such as sales, marketing, and finance, can be combined to provide a comprehensive view of the organization's performance. This integrated approach allows for more informed decision-making and the identification of cross-departmental trends and opportunities.

4. The fourth section addresses the challenges of data management, particularly the issue of data silos. It discusses how these silos can hinder communication and collaboration between teams. The author suggests implementing data governance policies and using centralized data platforms to break down these barriers and ensure that all stakeholders have access to the information they need.

5. Finally, the document concludes with a call to action, urging organizations to embrace a data-driven culture. It stresses that data is not just a byproduct of business operations but a valuable asset that, when managed correctly, can drive growth and innovation. The author encourages leadership to invest in the necessary infrastructure and training to support this data-centric approach.



VENEZUELA

2000

Table 1.

VENEZUELA: GROSS VALUE ADDED AT FACTOR COST BY KIND OF ECONOMIC ACTIVITY.

(Millions of boliveras)

Kind of economic activity	1969	1970	1971	1972	1973
Agriculture, forestry, hunting and fishing	3 618	3 738	3 753	3 993	4 766
Mining and quarrying	8 796	9 648	10 975	11 518	17 356
Manufacturing	6 695	7 480	8 560	9 965	13 221
Construction	1 964	1 985	2 356	3 073	3 714
Electricity, gas, water and sanitary services	771	829	896	995	1 006
Transport, storage and communication	4 165	5 144	5 555	6 348	7 119
Commerce, financial institutions and real estate	11 188	11 844	12 663	13 941	15 210
Dwellings	-	-	-	-	-
Public administration, defense and other services	7 538	8 492	9 480	10 656	11 789
<b>Total</b>	<b>44 735</b>	<b>49 160</b>	<b>54 238</b>	<b>60 829</b>	<b>74 175</b>

Note: Only years for which corrected official figures are available.

Table 2

VENEZUELA: COMPENSATION OF EMPLOYEES BY KIND OF ECONOMIC ACTIVITY

(Millions of bolivares)

Kind of economic activity	1969	1970	1971	1972	1973
Agriculture, forestry, hunting and fishing	1 514	1 542	1 563	1 389	1 841
Mining and quarrying	711	773	754	801	814
Manufacturing	3 215	3 559	3 969	4 333	4 820
Construction	1 463	1 480	1 758	2 284	2 757
Electricity, gas, water and sanitary services	422	433	491	519	544
Transport, storage and communication	1 522	1 846	2 021	2 358	2 788
Commerce, financial institutions and real estate	3 956	4 301	4 701	5 120	5 832
Dwellings					
Public administration, defense and other services	6 281	7 081	7 912	8 912	9 809
<u>Total</u>	<u>19 084</u>	<u>21 015</u>	<u>23 199</u>	<u>25 716</u>	<u>29 205</u>

Note: Only years for which corrected official figures are available.

Table 3

VENEZUELA: WAGES AND SALARIES BY KIND OF ECONOMIC ACTIVITY

(Millions of bolivares)

Kind of economic activity	1969	1970	1971	1972	1973
Agriculture, forestry, hunting and fishing	1 503	1 530	1 572	1 378	1 829
Mining and quarrying	671	726	712	753	759
Manufacturing	3 104	3 431	3 847	4 181	4 647
Construction	1 430	1 446	1 718	2 229	2 694
Electricity, gas, water and sanitary services	397	406	463	486	506
Transport, storage and communication	1 471	1 780	1 952	2 274	2 692
Commerce, financial institutions and real estate	3 829	4 152	4 551	4 951	5 639
Dwellings	-	-	-	-	-
Public administration, defense and other services	6 069	6 857	7 616	8 603	9 458
<u>Total</u>	<u>18 474</u>	<u>20 328</u>	<u>22 431</u>	<u>24 855</u>	<u>28 224</u>

Table 4

VENEZUELA: EMPLOYERS' SOCIAL SECURITY CONTRIBUTIONS BY KIND OF ECONOMIC ACTIVITY

(Millions of bolivares)

Kind of economic activity	1969	1970	1971	1972	1973
Agriculture, forestry, hunting and fishing	11	12	11	11	12
Mining and quarrying	40	47	42	48	55
Manufacturing	111	128	132	152	173
Construction	33	34	40	55	63
Electricity, gas, water and sanitary services	25	27	28	33	38
Transport, storage and communication	51	66	69	84	96
Commerce, financial institutions and real estate	127	149	150	169	193
Dwellings	-	-	-	-	-
Public administration, defense and other services	212	224	296	309	351
<u>Total</u>	<u>610</u>	<u>687</u>	<u>768</u>	<u>861</u>	<u>981</u>

Table 5

VENEZUELA: GROSS OPERATING SURPLUS BY KIND OF ECONOMIC ACTIVITY

(Millions of bolivares)

Kind of economic activity	1969	1970	1971	1972	1973
Agriculture, forestry hunting and fishing	2 104	2 196	2 170	2 604	2 925
Mining and quarrying	8 085	8 875	10 221	11 117	16 542
Manufacturing	3 480	3 921	4 581	5 632	8 401
Construction	501	505	598	789	957
Electricity, gas, water and sanitary services	349	396	405	416	462
Transport, storage and communication	2 643	3 298	3 594	3 990	4 325
Commerce, financial institutions and real estate	7 232	7 543	7 962	8 821	9 378
Dwellings	-				
Public administration, defense and other services	1 257	1 411	1 568	1 744	1 980
<u>Total</u>	<u>25 651</u>	<u>28 145</u>	<u>31 039</u>	<u>35 113</u>	<u>44 970</u>

Note: Only years for which corrected official figures are available.

Table 6  
 VENEZUELA: DEPRECIATION BY KIND OF ECONOMIC ACTIVITY  
 (Millions of bolivares)

Kind of economic activity	1969	1970	1971	1972	1973
Agriculture, forestry, hunting and fishing	329	336	339	329	383
Mining and quarrying	698	691	755	729	752
Manufacturing	822	1 020	1 202	1 231	1 342
Construction	132	133	158	152	184
Electricity, gas, water and sanitary services	136	177	166	171	191
Transport, storage and communication	532	683	751	766	971
Commerce, financial institutions and real estate	1 497	1 618	1 717	1 851	1 998
Dwellings					
Public administration, defense and other services	138	166	177	189	216
<u>Total</u>	<u>4 284</u>	<u>4 824</u>	<u>5 265</u>	<u>5 418</u>	<u>6 037</u>

Note: Only years for which corrected official figures are available.



Table 7

VENEZUELA: NET OPERATING SURPLUS BY KIND OF ECONOMIC ACTIVITY

(Millions of bolivares)

Kind of economic activity	1969	1970	1971	1972	1973
Agriculture, forestry, hunting and fishing	1 775	1 860	1 831	2 275	2 542
Mining and quarrying	7 387	8 184	9 466	10 388	15 790
Manufacturing	2 658	2 901	3 379	4 401	7 059
Construction	369	372	440	637	773
Electricity, gas, water and sanitary services	213	219	239	245	271
Transport, storage and communication	2 111	2 615	2 783	3 224	3 354
Commerce, financial institutions and real estate	5 735	5 925	6 245	6 970	7 380
Dwellings					
Public administration, defense and other services	1 119	1 245	1 391	1 555	1 764
<u>Total</u>	<u>21 367</u>	<u>23 321</u>	<u>25 774</u>	<u>29 695</u>	<u>38 933</u>

Notes: Only years for which corrected official figures are available.

The first part of the document discusses the importance of maintaining accurate records of all transactions. It is essential to ensure that every entry is properly documented and verified. This process helps in identifying any discrepancies or errors early on, preventing them from escalating into larger issues.

In addition, the document emphasizes the need for transparency and accountability. All stakeholders should have access to the relevant information, and any changes or updates should be clearly communicated. This fosters trust and ensures that everyone is working towards the same goals.

Furthermore, the document highlights the significance of regular audits and reviews. These checks are crucial for maintaining the integrity of the data and ensuring that the system is functioning as intended. Any anomalies or irregularities should be investigated promptly and resolved.

Finally, the document stresses the importance of staying up-to-date with the latest industry trends and technologies. Continuous learning and improvement are key to staying competitive and ensuring that the organization is always at the forefront of its field.

III. SOURCES AND ESTIMATE PROCEDURES (METHODS)



### III. Sources and estimate procedures

#### ARGENTINA

- (a) Sources:
- [1] Central Bank of Argentina, Origen del Producto y Distribución del Ingreso, 1950-1969, Suplemento del Boletín Estadístico, January 1971.
  - [2] Estimaciones preliminares provided by the Central Bank of Argentina, August 1972
  - [3] Ministry for Economic Programming and Co-ordination, Informe Económico y Social para la Elaboración del Plan Trienal, Preliminary estimates, November 1973
  - [4] CONADE-CEPAL (National Development Council - Economic Commission for Latin America), Income distribution and National Accounts, Volume II, Buenos Aires, 1965

- (b) Procedures:
- Table 1
- 1960-1969 : Extracted from [1].
  - 1970-1971 : Extracted from [2].
  - 1972 : Estimates based on information provided in [3].

- Table 2
- 1960-1969 : Extracted from [1].
  - 1970-1972 : Obtained by adding the series of tables 3 and 4.

- Table 3
- 1960-1969 : Extracted from [1].
  - 1970-1972 : Estimates based on information provided in [3].

- Table 4
- 1960-1969 : Extracted from [1].
  - 1970-1972 : Total employers' contribution estimates based on information provided in [3] and distributed by sector on the basis of the 1969 ratios of employers' contributions to the remunerations received by salaried employees in each kind of economic activity.

Table 5

1960-1969 : Extracted from [1].  
1970-1972 : Obtained by establishing the difference between the series of tables 1 and 2.

Table 6

1960-1972 : Total depreciation estimated on the basis of information provided in [3], and distributed by sector using the 1961 ratios of depreciation to the product of each kind of economic activity obtained in [4].

Table 7

1960-1972 : Obtained by establishing the difference between series of tables 5 and 6.

BRAZIL

(a) Sources:

- [1] Fundação Getúlio Vargas, Instituto Brasileiro de Economia, National Accounts Centre, Sistema de Contas Nacionais, Setembro 1974
- [2] Fundação Getúlio Vargas, Instituto Brasileiro de Economia, National Accounts Centre, Contas Nacionais do Brasil, 1939, 1947-1967, Volume II
- [3] Serviço de Estatística da Previdência e Trabalho, Anuário Estatístico do Brasil, 1970, 1971, 1972 and 1973, Resultados da Apuração por Amostragem dos formulário da "Lei dos 2/3"
- [4] Ministry of Planning and Co-ordination, Fundação IBGE, Instituto Brasileiro de Estatística, Censo Demográfico, 1970
- [5] Estimaciones Propias de Población Ocupada, on the basis of census data
- [6] Revista Brasileira de Economia, Vol.27, July/September 1973, Matriz do Insumo - Produto do Brasil, 1969
- [7] Instituto Nacional de Previdência Social, Anuario do Brasil 1963-1972, Institutos E Serviços de Previdência E Assistência Social, Resultados Financeiros

[8] CEMLA (Centre for Latin American Monetary Studies), Aspectos Financieros del Seguro Social en América Latina, 1963

(b) Procedures:

Note:

For the years 1960 to 1969 inclusive no revised official information, consistent with the new official series which began in 1970, was available.

Table 1

1959 and

1970-1972 : The depreciation estimates by kind of economic activity of table 6, based on [1], were added to the figures for the net domestic product at factor cost.

1960

: The official estimates of the product by kind of activity for 1959 were projected to 1960 by applying quantum and price indexes to the estimates in [2]. The gross values were obtained by adding the depreciation estimates by kind of economic activity of table 6.

Table 2

1970-1972 : Obtained by adding the series of tables 3 and 4.

Table 3

1970-1972 : The salaries of the non-agricultural sectors were obtained on the basis of the average monthly salaries presented in [3], and the employed population estimates provided in [4] and [5], assuming that the annual total was equal to 12.7 times the monthly remuneration calculated, so that the estimate would include overtime pay and bonuses. Estimates of agricultural wages were obtained from information provided in [5], from partial data on minimum wages paid, and from the employed population estimates on the basis of [4] and [5].

Table 4

Table 4

1970-1972 : The percentage of employers' contributions given in [7] was applied to the total of social security contributions of [6]. The sectoral estimates were arrived at by using estimates of compliance with social security laws, expressed as ratios of employers' contributions to salaries for each kind of economic activity.

Table 5

1970-1972 : Obtained by establishing the difference between the series of the tables 1 and 2.

Table 6

1959, 1960,

1970-1972 : The totals correspond to the official estimates provided in sources [1] and [2], which were distributed by sector using estimated ratios of depreciation to product, for each kind of economic activity, on the basis of partial data and relevant international comparisons.

Table 7

1970-1972 : Obtained by establishing the difference between the series of tables 5 and 6.

COLOMBIA

(a) Sources:

- [1] Central Bank of Colombia, Cuentas Nacionales, 1950-1967
- [2] Central Bank of Colombia, Cuentas Nacionales, 1967-1969
- [3] Central Bank of Colombia, Cuentas Nacionales, 1968-1972
- [4] Central Bank of Colombia (Banco de la República), Cuentas Nacionales, 1967-1970
- [5] CEMLA (Centre for Latin American Monetary Studies), Aspectos Financieros del Seguro Social en América Latina, 1963

(b) Procedures:

Table 1

1960-1966 : Extracted from [1].  
1967 : Extracted from [2].  
1968-1972 : Extracted from [3].

/Table 2



Table 2

1960-1966 : Extracted from [1].  
1967-1970 : Extracted from [4].  
1971-1972 : Extracted from [3].

Table 3

1960-1972 : Obtained by establishing the difference between the series of tables 2 and 4.

Table 4

1960-1972 : The percentage of employers' contributions given in [5] was applied to the total of social security contributions according to [1], [3] and [4]. The sectoral estimates were arrived at by using estimates of compliance with social security laws, expressed as ratios of employers' contributions to the remuneration of salaried employees for each kind of economic activity.

Table 5

1960-1972 : Obtained by establishing the difference between the series of tables 1 and 2.

Table 6

1960-1972 : Total depreciation according to sources [1], [3] and [4], was distributed by sector on the basis of estimated ratios of depreciation to product, for each kind of economic activity, on the basis of partial data and relevant international comparisons.

Table 7

1960-1972 : This was obtained by establishing the difference between the series of tables 5 and 6.

COSTA RICA

(a) Sources:

[1] Central Bank of Costa Rica, Cifras de Cuentas Nacionales de Costa Rica, Serie 1957-1972

[2] CEMLA (Centre for Latin American Monetary Studies), Aspectos Financieros del Seguro Social en América Latina, 1963

(b) Procedures:

Table 1

1960-1972 : Extracted from [1].

/Table 2

Table 2

1960-1972 : Extracted from [1].

Table 3

1960-1972 : Obtained by establishing the difference between the series of tables 2 and 4.

Table 4

1960-1972 : The percentage of employer contributions provided in [2] was applied to the total of social security contributions according to [1]. The sectoral estimates were arrived at by using estimates of compliance with social security laws expressed as ratios of employer contributions to remunerations of salaried employees for each kind of economic activity.

Table 5

1960-1972 : Obtained by establishing the difference between the series of tables 1 and 2.

Table 6

1960-1972 : Extracted from [1].

Table 7

1960-1972 : Obtained by establishing the difference between the series of tables 5 and 6.

CHILE

(a) Sources:

[1] ODEPLAN, Distribución del Ingreso y Cuentas de Producción 1960-1970

[2] ODEPLAN, Cuentas Nacionales de Chile 1965-1972

[3] Instituto Nacional de Estadísticas, Indices de Sueldos y Salarios y Población Ocupada según Actividad Económica, Monthly Bulletin of the Central Bank of Chile, July 1972 and July 1973

(b) Procedures:

Table 1

1960-1970 : Extracted from [1].

1971-1972 : The estimates of sectoral depreciation in table 6 were added to the net domestic product at factor cost according to [2].

Table 2

1960-1970 : Extracted from [1].  
1971-1972 : Obtained by adding the series of tables 3 and 4.

Table 3

1960-1970 : Extracted from [1].  
1971-1972 : On the basis of total wages and salaries according to [2], estimates were made of wages and salaries by kind of economic activity with indexes of wages and salaries, and of the population employed using information contained in [3].

Table 4

1960-1970 : Extracted from [1].  
1971-1972 : On the basis of the total of employers' contributions recorded in [2], values by kind of economic activity were estimated using 1970 sectoral ratios of employer contributions to wages and salaries.

Table 5

1960-1970 : Extracted from [1].  
1971-1972 : Obtained by establishing the difference between the series in tables 1 and 2.

Table 6

1960-1970 : Extracted from [1].  
1971-1972 : Total depreciation was obtained from [2]. Depreciation by kind of economic activity was estimated maintaining the 1970 sectoral ratios of depreciation per product.

Table 7

1960-1970 : Extracted from [1].  
1971-1972 : Obtained by establishing the difference between the series of tables 5 and 6.

MEXICO

(a) Sources:

[1] Bank of Mexico, Cuentas Nacionales y Acervo de Capital, 1950-1967

[2] Bank of Mexico, Informe Anual, 1973

- [3] ILO (International Labour Organisation), Yearbook of Labour Statistics, 1973
- [4] Ministry of Industry and Trade, Dirección General de Estadística, Censo General de Población, 1960
- [5] Ministry of Industry and Trade, Dirección General de Estadísticas, Censo General de Población, 1970
- [6] Estimaciones Propias de Población Ocupada, on the basis of census data
- [7] IBRD, The Economy of Mexico A Basic Report, Report 192-ME
- [8] CEMLA (Centre for Latin American Monetary Studies), Aspectos Financieros del Seguro Social en América Latina, 1963

(b) Procedures: Table 1

- 1960-1967 : Extracted from [1].
- 1968-1972 : From the gross domestic product at sectoral market prices according to [2], the indirect taxation, net of subsidy, was deducted, and was estimated on the basis of 1967 sectoral ratios of net indirect taxation to product.

Table 2

- 1960-1967 : Extracted from [1].
- 1968-1972 : Obtained by adding the series of tables 3 and 4.

Table 3

- 1960-1972 : Using average wages and salaries and employed population indexes according to [3], [4], [5] and [6] respectively, remuneration indexes were prepared by kind of economic activity and were applied to sectoral wages and salaries in force in 1967.

Table 4

1960-1972 : The shares of employers' contributions estimated in [7] were applied to the annual totals of social security contributions according to [6]. The sectoral estimates were arrived at using estimates of compliance with social security laws expressed as ratios of employers' contributions to wages and salaries for each kind of economic activity.

Table 5

1960-1967 : Extracted from [1].  
1968-1970 : Obtained by establishing the difference between the series of tables 1 and 2.

Table 6

1960-1967 : Extracted from [1].  
1968-1972 : Sectoral ratios of depreciation to product estimated for 1967, corrected by relative price indexes of capital goods were used.

Table 7

1960-1967 : Extracted from [1].  
1968-1972 : Obtained by establishing the difference between the series of tables 5 and 6.

PANAMA

(a) Sources:

[1] Dirección de Estadística y Censo, Ingreso Nacional, 1960-1968, Estadística Panameña, Serie C, VII 70.

[2] Dirección de Estadística y Censo, Ingreso Nacional, 1969-1970, Estadística Panameña, año XXXI

[3] Dirección de Estadística y Censo, Ingreso Nacional, 1971-1972, Estadística Panameña, año XXXIII

[4] Dirección de Estadística y Censo, Encuesta Mano de Obra, 1963-1972, Estadística Panameña, Serie "0".

[5] Dirección de Estadística y Censo, Population Census, 1960

/ [6] Dirección

[6] Dirección de Estadística y Censo, Population Census, 1970

[7] Estimaciones Propias de Población Ocupada, on the basis of census data

[8] CEMLA (Centre for Latin American Monetary Studies), Aspectos Financieros del Seguro Social en América Latina, 1963

(b) Procedures:

Note:

For the years 1960-1962, it was only possible to obtain adequate information for tables 1 and 6.

Table 1

1960-1968 : Extracted from [1].

1968-1970 : Extracted from [2].

1971-1972 : Extracted from [3].

Table 2

1963-1972 : Obtained by adding the series of both tables 3 and 4.

Table 3

1963-1972 : Estimates according to information contained in [4], [5], [6] and [7].

Table 4

1963-1972 : The shares of employers' contributions of [8] were applied to the total of social security contributions according to [1], [2] and [3]. Sectoral estimates were arrived at using estimates of compliance with social security laws expressed as ratios of employer contributions to wages and salaries for each kind of economic activity.

Table 5

1963-1972 : Obtained by establishing the difference between the series of tables 1 and 2.

Table 6

1960-1972 : Total depreciation according to [1], [2] and [3] was distributed by sector according to estimated ratios of depreciation to product for each kind of economic activity, on the basis of partial data and relevant international comparisons.

/Table 7

Table 7

1963-1972 : Obtained by establishing the difference between the series of tables 5 and 6.

PERU

(a) Sources:

[1] Estimaciones preliminares provided by the Banco Central de Reserva del Perú in April 1972

[2] Banco Central de Reserva del Perú, Cuentas Nacionales, 1960-1973

[3] CEMLA (Centre for Latin American Monetary Studies), Aspectos Financieros del Seguro Social en América Latina, 1963

(b) Procedures:

Table 1

1960-1968 : Extracted from [1]

1969-1972 : The gross domestic product at factor cost was calculated on the basis of the gross national product at market prices according to [2], by bringing net sectoral indirect taxation and net sectoral profit transferred abroad for the period up to date on the basis of relevant indicators.

Table 2

1960-1970 : Extracted from [1].

Table 3

1960-1970 : Obtained by establishing the difference between the series of tables 2 and 4.

Table 4

1960-1970 : The shares of employers' contributions of [3] were applied to the total of social security contributions according to [2]. Sectoral estimates were arrived at by using estimates of compliance with social security laws expressed as ratios of employer contributions to the remuneration of salaried employees for each kind of economic activity.

Table 5

1960-1968 : Extracted from [1].

1969-1970 : Obtained by establishing the difference between the series of tables 1 and 2.

Table 6

1960-1968 : Extracted from [1].  
1969-1972 : Depreciation was obtained from [2].  
Depreciation by type of economic activity  
was estimated by maintaining the sectoral  
ratios of depreciation to product in  
force in 1968.

Table 7

1960-1968 : Extracted from [1].  
1969-1970 : Obtained by establishing the difference  
between the series of tables 5 and 6.

URUGUAY

(a) Sources:

- [1] Central Bank of Uruguay, Cuentas Nacionales, 1969  
[2] Central Bank of Uruguay, Información Disponible  
sobre Cuentas Nacionales, November 1972  
[3] Central Bank of Uruguay, Cuentas Nacionales, 1971  
[4] Dirección General de Estadísticas y Censo,  
Indice Medio de Salarios por Actividad Económica,  
Yearbook of Labour Statistics, ILO  
[5] Central Bank of Uruguay, Sueldos y Salarios, 1971

(b) Procedures:

Table 1

1960-1967 : Extracted from [1].  
1968-1970 : Extracted from [2].

Table 2

1960-1967 : Extracted from [1].  
1968-1969 : Obtained by adding the series of tables 3  
and 4.  
1970 : Average salary indexes according to [4]  
were applied to sectoral remunerations  
for 1969, and the results were made  
compatible with the total of remunerations  
for 1970 submitted in [3].

Table 3

1960-1967 : Extracted from [1].  
1968-1969 : Extracted from [5].  
1970 : Obtained by establishing the difference  
between the series of tables 2 and 4.



Table 4

1960-1967 : Extracted from [1].  
1968-1970 : Ratios of employers' contributions to remunerations of salaried employees by kind of economic activity 1967 were used, and the results were made compatible with the total of employers' contributions for 1968-1970 presented in [3].

Table 5

1960-1967 : Extracted from [1].  
1968-1970 : Obtained by establishing the difference between the series of tables 1 and 2.

Table 6

1960-1967 : Extracted from [1].  
1968-1970 : Sectoral ratios of depreciation to product were used, calculated on the basis of estimates for the period 1960-1967 and corrected by relative price indexes for capital goods.

Table 7

1960-1967 : Extracted from [1].  
1968-1970 : Obtained by establishing the difference between the series of tables 5 and 6.

VENEZUELA

(a) Sources:

- [1] Central Bank of Venezuela, Informe Económico, 1973
- [2] Central Bank of Venezuela, Informes Económicos, 1960-1972
- [3] Presidential Messages to Congress, 1972 and 1973, Datos sobre ingresos percibidos por el Instituto Venezolano de Seguridad Social
- [4] CEMLA (Centre for Latin American Monetary Studies), Aspectos Financieros del Seguro Social en América Latina, 1963

/(b) Procedures:

(b) Procedures:

Note:

The official revised series date from 1969 and were estimated on the basis of the new SNA; they are not conceptually comparable with the previous official series neither do they have the same coverage.

Table 1

1969-1973 : Extracted from [1].

Table 2

1969-1973 : Extracted from [1].

Table 3

1969-1973 : Obtained by establishing the difference between the series of tables 2 and 4.

Table 4

1969-1973 : The shares of employers' contributions presented in [4] were applied to the total of social security provisions arrived at according to [2] and [3]. Sectoral estimates were arrived at by using estimates of compliance with social security laws, expressed as ratios of employer contributions to remunerations of salaried employees for each kind of economic activity.

Table 5

1969-1973 : Extracted from [1].

Table 6

1969-1973 : Extracted from [1].

Table 7

1969-1973 : Extracted from [1].