

CENTRO LATINOAMERICANO DE DEMOGRAFIA

VI REUNION DEL CONSEJO DIRECTIVO

● ADMINISTRATIVE REPORT FOR
THE PERIOD 1 JANUARY - 31 DECEMBER 1972

CD6/8
Serie G, No. 45

Santiago de Chile
Abril de 1973

11

12

13

14

15

16

I N D E X

	<u>Page</u>
F I N A N C E	1
I. FUNDS FROM THE UNITED NATIONS AND OTHERS ADMINISTERED THROUGH THE UNITED NATIONS TRUST FUND	1
II. FUNDS ADMINISTERED DIRECTLY BY CELADE AND OTHERS NOT INTEGRATED INTO THE UNITED NATIONS TRUST FUND	3
III. FUNDS DELEGATED TO CELADE FOR PROGRAMMES FROM OTHER INSTITUTIONS	4
IV. PAYMENT OF GOVERNMENTS CONTRIBUTIONS	4
V. AUDITING OF ACCOUNTS	5
 P E R S O N N E L	 6
I. PROFESSIONAL STAFF	6
II. NON-PROFESSIONAL STAFF	7
III. COMPUTING SERVICE	8
IV. RECLASSIFICATION OF THE NON-PROFESSIONAL STAFF	8
V. MISSIONS CARRIED OUT BY PERSONNEL	9
 O T H E R A D M I N I S T R A T I V E A S P E C T S	 9
I. PREMISES	9
II. EQUIPMENT	9
 APPENDIX I. Final Consolidated Budget, for 1972	 13
APPENDIX II. United Nations Development Programme (UNDP) Contribution	16
APPENDIX III. Total Contribution from the United Nations Fund for Population Activities (UNFPA) for 1972 ...	17
APPENDIX III-1 United Nations Fund for Population Activities (UNFPA) Contribution	18
APPENDIX III-2 United Nations Fund for Population Activities (UNFPA) Contribution	19
APPENDIX III-3 United Nations Fund for Population Activities (UNFPA) Contribution	20
APPENDIX III-4 United Nations Fund for Population Activities Contribution	21
APPENDIX III-5 United Nations Fund for Population Activities (UNFPA) Contribution	22

	<u>Page</u>	
APPENDIX IV.	Agency for International Development Contribution	23
APPENDIX V.	Statement of allocations from the Population Council Delivered to the Trust Fund for the Programmes of Comparative Surveys of Rural Fertility and Induced Abortion in Latin America, 1972	24
APPENDIX VI.	Ford Foundation (Grant 680-0754) Contribution.	25
APPENDIX VII.	Contribution (In Kind) from the University of Chile	26
APPENDIX VIII.	United Nations Fund for Population Activities Contributions	27
APPENDIX IX	United Nations Fund for Population Activities Contribution	28
APPENDIX X.	United Nations Fund for Population Activities Contribution	29
APPENDIX XI.	Statement of Outstanding Obligation of Participating Countries	30
APPENDIX XII.	Professional and Non-Professional Staff as of 31.12.72. Distribution by Sources of Financing Santiago-San Jose	
APPENDIX XIII.	CELADE. Manning Table as of 31 December 1972 .	

F I N A N C E

FINAL BUDGET FOR THE YEAR 1972

Appendix 1 to this Report includes a consolidated statement of the appropriations from different sources actually made available for CELADE's operation during the year 1972. The total amount included in the present statement differs in excess from that approved by the Board in its Fifth Session by US\$ 234,684.65. For the most part, this difference is due to changes in the manner of estimating the cost of personnel by UNDP and the University of Chile and not precisely to a real increase of the funds actually available to CELADE. Early in 1972, the UNDP changed all appropriations for personnel to a pro-forma basis, thus raising by US\$ 179,001.00 the funds allotted to CELADE under this item. The contribution of the University of Chile, on the other side, increased by US\$ 21,204.00 due primarily to a 100 % adjustment in salaries of the personnel being financed by it. The only real additions to the financial capacity of CELADE in 1972 are from a new grant by the Ford Foundation and additional income from services rendered.

The results of the financial year are listed as follows, in accordance with the actual contributions of the various financing sources during 1972.

I. FUNDS FROM THE UNITED NATIONS AND OTHERS ADMINISTERED THROUGH THE UNITED NATIONS TRUST FUND

a) United Nations Development Programme (UNDP). This allocation amounted to US\$ 671,252.00, of which a balance remained as of 31 December 1972 of US\$ 43,325.81, distributed as shown in Appendix II. In general, the personnel contemplated for financing against these funds was hired according to plan. However, 16 men-months were not used, of which it has been possible to re-programme 10 men-months. Footnotes to this Appendix explain the reasons for over-expenditures in items "non-professional staff", "equipment and supplies", and "miscellaneous".

b) United Nations Fund for Population Activities (UNFPA). For 1972, funds granted to CELADE by UNFPA amounted to US\$ 480,647.00 (See Appendix III) earmarked for the following projects:

- i) Project TF/RLA/OOS (XB-1334): US\$ 400,000.00 for CELADE's activities in Population Programmes, of which US\$ 364,104.26 were spent. This balance was due to savings resulting from difficulties in recruiting

- the Chief Administrative Officer (8 men-months) for Santiago, and 2 posts for San Jose, which were financed by USAID during 1972 (one administrative officer and one demographer, 6 men-months each), and lower costs than estimated when preparing budget for the non-professional staff. (See Appendix III-1).
- ii) Project TF/RLA/006 (XB-1335): For the financing of follow-up activities in the Seminar on Methods of Evaluation of Family Planning Programmes. The balance of US\$ 8,361.00 as of 31 December 1971 was reprogrammed for 1972. Actual expenditures during 1972 amounted to US\$ 7,713.91. (See Appendix III-2).
 - iii) Projects TF/RLA/001 (XB-1256): The balance of US\$ 8,751.00 from the Second Intensive Course in Demography for Central America and the Caribbean was reprogrammed to finance the Course on Analysis of Insufficient Census Information, carried out in San Jose during September 1971. As mentioned in the 1971 Report, the authorization of expenditures for this reprogramming reached CELADE after 31 December of that year, and hence, expenditures incurred in the Course are shown in the present report. (See Appendix III-3).
 - iv) Project TF/RLA/005 (XB-1158): The balance for 1971, amounting to US\$ 7,825.00 was reprogrammed for 1972, to finance follow-up activities of the Seminar on the Use of Demographic Data and Studies in Planning, actual expenditures of which amounted to US\$ 7,547.80. (See Appendix III-4).
 - v) Project TF/RLA/013: Corresponding to that approved for the Programme of Evaluation in Family Planning (US\$ 55,710.00), actual expenditure of which in 1972 amounted only to US\$ 8,972.75 (See Appendix III-5). The unexpended balance is principally explained by delays in the hiring of expert personnel, for which 16 men-months were estimated, only 5 having been used. This situation also affects the item "travel". Actions will be undertaken to expand the period of duration of the Programme.

e) Agency for International Development (USAID). The contribution by USAID for the period July 1971-June 1972, entered into the United Nations Trust Fund, amounted to US\$ 300,000.00. As of 31 December 1971, the unexpended balance of this allocation amounted to US\$ 182,010.06, which were earmarked for the continuation of CELADE's activities for the period January-June 1972. Actual expenditures amounted to US\$ 182,535.96; the over-expenditure being due to higher costs in the items "Professional Staff", "equipment and supplies". (See Appendix IV).

d) Population Council. Appendix V lists expenditures during 1972 against grants delivered by the Population Council to the United Nations Trust Fund, as follows:

- i) Project XB-1424 (D.71.45): For the Programme of Comparative Surveys on Rural Fertility in Latin America. Against the balance as of 31 December 1971 amounting to US\$ 10,094.76, expenditures amounting to US\$ 9,828.37, were made in 1972, earmarked, principally, for the financing of non-professional staff and use of the computer.
- ii) Project XB-1436 (D.71.142): US\$ 22,264.00 for the continuation of the Programme in the above paragraph. Against this additional grant, expenditures to the amount of US\$ 14,437.97 were made in the same items already mentioned. The balance of US\$ 7,826.03 is earmarked

for financing the continuation of activities during 1973.

- iii) Project XB-1425 (D.67.48): For the Programme of Comparative Surveys on Induced Abortion in Latin America. Against the balance as of the end of 1971 amounting to US\$ 9,612.00 of this grant, expenditures were made amounting to US\$ 4,457.88 exclusively in computing services. The difference, that is US\$ 5,154.12 is earmarked for financing the continuation of activities during 1973.

e) Ford Foundation. As part of the grant of US\$ 256,000.00 donated by the Foundation to CELADE in October 1971, the latter deposited in the Trust Fund, at the beginning of 1972, the amount of US\$ 151,200.00 for a period of two years. Actual expenditures as of 31 December 1972 against the portion corresponding to that year amounted to US\$ 4,098.19. Delays in the hiring of professional staff for the projects contemplated in this grant explain to a large extent the balance of US\$ 71,501.81 which is earmarked for financing the continuation of activities in 1973. (See Appendix VI).

II. FUNDS ADMINISTERED DIRECTLY BY CELADE AND OTHERS NOT INTEGRATED INTO THE UNITED NATIONS TRUST FUND

a) Contribution in Kind from the Government of Chile. This contribution, which the Centre receives through the University of Chile, covers mainly the salaries of 11 members of the non professional staff and other services listed in Appendix VII. In the year 1972, this contribution amounted to E° 794.599,00 equivalent to US\$ 39,729.95, at the exchange rate of E° 20,00 per dollar, adopted by the University of Chile.

b) Population Council. The balance of grants delivered directly to CELADE prior to 31 December 1971 amounted as of that date to US\$ 6,539.37. Expenditures in 1972 amounted to US\$ 4,006.65. (See Audit Report).

c) Rockefeller Foundation. CELADE received during 1972 a second contribution of US\$ 10,345.00 for the Research Project on Actors in the Formulation of Population Policies, which added to the balance of US\$ 15,578.32 existing at the beginning of the year, gave a total allocation of US\$ 25,923.32. Expenditures incurred during the period under report amounted to US\$ 18,577.64. (See Audit Report).

d) Interamerican Development Bank (IDB).

- i) Of the budget approved by the IDB (US\$ 88,400.00) for the Research Programme on Urban Growth and Population, CELADE received US\$ 41,710.95 in 1972. Expenditures incurred during 1972 against this programme amounted to US\$ 43,157.57 (See Audit Report). The over-expenditure will be recovered through the funds to be delivered during 1973.
- ii) The balance from the Seminar on Use of Demographic Data and Studies in Planning, held in 1971, was reimbursed to the IDB in two parts: US\$ 7,266.50 in March and E° 41.090,04 (equivalent to US\$ 3,365.28 at the exchange rate of E° 12.21 per US\$ 1.00, adopted for the Bank's operations) in October 1972.

e) The Ford Foundation. Of the grant referred to under Section I e), US\$ 78,300.00 were delivered during 1972 to be directly administered by CELADE. Actual expenditures against this contribution amounted to US\$ 21,703.00. (See Audit Report).

f) International Development Research Centre (IDRC). The IDRC approved a budget of US\$ 149,300.00 to cover expenditures of specific research projects for two years. The actual contribution during 1972 amounted to US\$ 67,325.00, and expenditures amounted to US\$ 31,700.64. (See Audit Report).

g) Miscellaneous Income. The Audit Report lists the income received during 1972, from sale of publications and services rendered, amounting to the approximate equivalent of US\$ 18,830.00. Expenditures against these funds in 1972 amounted to US\$ 15,893.00, also shown in the Audit Report. (See Audit Report).

III. FUNDS DELEGATED TO CELADE FOR PROGRAMMES FROM OTHER INSTITUTIONS

By delegation from the respective organizations, CELADE was responsible for the administration of the following projects during 1972:

a) United Nations Fund for Population Activities (UNFPA):

- i) Project N° TF/HON/002 (XB-1161), Technical Assistance for the Honduras National Demographic Survey. (See Appendix VIII)
- ii) Project N° TF/CUB/001 (XB-1395). Balance as of 31 December 1971, reprogrammed to cover commitments of the First National Course in Demography in Cuba (See Appendix IX).
- iii) Project N° TF/CUB/002, Second National Course in Demography in Cuba (See Appendix IX).
- iv) Project TF/RLA/015: US\$ 39,442.00 for the Social Research Programme on Population Problems Relevant to Population Policies in Latin America. In this project there were no expenditures due to the fact that the execution of the programme was initiated in March 1973. The corresponding actions will be undertaken to change the date of initiation of this programme. (See Appendix X).

b) Ford Foundation. On making the grant referred to under I e), the Ford Foundation delegated to CELADE the administration of a research project to be carried out by FLACSO within the ELAS/CELADE Programme. During 1972, US\$ 25,000.00 were made available to CELADE for this project, expenditures amounting to US\$ 23,815.11. (See Audit Report).

IV. PAYMENT OF GOVERNMENTS CONTRIBUTIONS

In view of the fact that as from 1971, the UNDP modified the counterpart contributions in cash, it has been considered opportune to include as Appendix XI of this Report, a statement of outstanding obligations of participating countries in the project of Financial Assistance to CELADE.

V. AUDITING OF ACCOUNTS

The firm Pinedo Hnos. y Cía. Ltda., correspondents of Arthur Young and Co., was requested to audit the accounts corresponding to the contributions made by the Population Council, the Rockefeller Foundation, the International Development Bank, the Ford Foundation, the International Development Research Centre, and income received from other sources.

The Report of Pinedo Hnos. y Cía. Ltda., is included in the Audit Report, which is submitted separately.

For reasons of an internal nature of the donor agencies, the United Nations and the Agency for International Development audit of accounts for 1971 and 1972, in the United Nation's case, and for 1970, 1971 and 1972 in USAID's case, have not yet been performed at the date of the meeting of this Sixth Session of CELADE's Governing Board.

P E R S O N N E L

As of 31 December 1972, CELADE's Manning Table was composed of 157 posts, of which 12 were vacant at that date.

Also attached to CELADE are two Dutch associate experts, two staff members from other institutions (ECLA and OAS), and a visiting researcher (University of Michigan).

I. PROFESSIONAL STAFF

The Professional Manning Table at the end of that year was composed of 42 staff members distributed as follows: Headquarters, 30 and Sub-Centre, 12, who were financed against the following sources:

	TOTAL	Staff members	
		Headquarters	Sub-Centre
1. <u>Trust Fund for CELADE in the</u>			
<u>United Nations</u>	<u>31</u>	<u>21</u>	<u>10</u>
United Nations Development Programme (UNDP)	18	13	5
United Nations Fund for Population Activities (UNFPA)			
-Support of Activities in the Field of Population (RIA/008)	10	7	3
-Programme of Evaluation of Family Planning (RIA/013)	1	1	-
United States Agency for International Development (XB-1370)	2	-	2
2. <u>Funds administered by CELADE</u>	<u>5</u>	<u>5</u>	<u>-</u>
Interamerican Development Bank	2	2	-
Rockefeller Foundation	2	2	-
International Development Research Centre (Canada)	1	1	-
3. <u>Other sources</u>	<u>6</u>	<u>4</u>	<u>2</u>
ELAS/CELADE Exchange Programme	1	1	-
The Netherlands ^{a/}	2	1	1
ECLA ^{b/}	1	-	-
OAS ^{c/}	1	1	-
University of Michigan ^{c/}	1	1	-
TOTAL	<u>42</u>	<u>30</u>	<u>12</u>

^{a/} Two associate experts financed by the Government of the Netherlands.

^{b/} Regional expert attached to the Sub-Centre.

^{c/} Visiting researchers.

Of the above financial sources, the International Research Development Centre of Canada appears for the first time in 1972 as a donor agency for CELADE. A second grant by the Ford Foundation was also used for the first time during that year.

The contribution from the Agency for International Development ceased on 30 July 1972. As from July, the United Nations Fund for Population Activities assumed financing of the posts covered by AID until that date.

In September 1972, the authorization to hire personnel to work in the Central Unit of the Social Research Programme on Population Problems Relevant to Population Policies in Latin America (PISPAL), financed by UNFPA (RLA/015), was delegated to CELADE. This authorization provides 5 professional posts which will be filled during 1973. These posts are not included in Appendices XII and XIII as they do not strictly belong to CELADE's Manning Table, since this Programme is being developed by 8 Social Research Centres of Latin America, the responsibility of constituting in its midst the Central Unit of this Programme having been assigned to CELADE.

II. NON-PROFESSIONAL STAFF

The non-professional Manning Table was composed of 103 staff members divided as follows: Headquarters, 90 and Sub-Centre, 13.

The financing sources for the non-professional staff were as follows:

	TOTAL	Staff members	
		Headquarters	Sub-Centre
1. <u>Trust Fund for CELADE in the</u>			
<u>United Nations</u>	<u>88</u>	<u>75</u>	<u>13</u>
United Nations Development Programme (UNDP)	6	6	-
United Nations Fund for Population Activities (UNFPA):			
-Support of Activities in the Field of Population (RLA/008)	75	62	13
-Programme of Evaluation of Family Planning (RLA/013)	2	2	-
Ford Foundation (XB-1511)	1	1	-
Population Council (XB-1436)	4	4	-
2. <u>Funds administered by CELADE</u>	<u>4</u>	<u>4</u>	<u>-</u>
Interamerican Development Bank	1	1	-
Rockefeller Foundation	1	1	-
International Research Development Centre (Canada)	1	1	-
Population Council (PEAL-Programme)	1	1	-

	TOTAL	Staff members	
		Headquarters	Sub-Centre
3. <u>Other sources</u>	<u>11</u>	<u>11</u>	<u>-</u>
ELAS/CELADE Exchange Programme	1	1	-
University of Chile ^{a/}	10	10	-
TOTAL	<u>103</u>	<u>90</u>	<u>13</u>

The contributions for the non-professional staff financed by the Agency for International Development and the University of Costa Rica, ceased in June 1972. As in the case of professional posts, UNFPA assumed responsibility for financing the corresponding posts.

For the PISPAL Central Unit financing has been contemplated for 5 research assistants, 3 secretaries and 2 administrative assistants, who have not been included in the respective appendices for the previously mentioned reasons.

III. COMPUTING SERVICE

The development of CELADE's computing activities gave rise to a problem in relation to functions to be performed by middle-level expert personnel responsible for special tasks such as analysis and programming.

In addition to two experts who are responsible for the management of the computing service and for the coordination of its technical activities, the Centre has 4 staff members who carry out specific task in the Processing Area. Since all these staff members carry out highly specific technical activities, directly related to the computer, it was difficult to classify them in the posts existing in the United Nations Salary Scale for local personnel. In the face of this problem and on the basis of a special study carried out at CELADE, a proposal was presented to the Office of Personnel for the establishment of the posts of analyst and programmer, according to the job description prepared for this purpose.

IV. RECLASSIFICATION OF THE NON-PROFESSIONAL STAFF

As in previous years, CELADE's Reclassification Commission composed of three members of the Centre's executive staff, met at the end of 1972 to examine the individual situation of non-professional staff members, with regard to their classification in relation to the functions they perform and their actual performance of them.

On that occasion, this Commission resolved to reclassify 15 staff members 11 of whom are financed by United Nations, the remaining being financed against

^{a/} The salary supplement of staff members financed by the University of Chile is absorbed by the United Nations Fund for Population Activities (RLA/008).

funds administered directly by CELADE. It was proposed that new classifications should be put into effect as from the first quarter of 1973.

V. MISSIONS CARRIED OUT BY PERSONNEL

During 1972, CELADE's professional staff carried out a total of 108 missions, distributed as follows:

	TOTAL	Missions	
		Headquarters	Sub-Centre
Technical assistance	77	47	30
Conferences, seminars and technical meetings	31	25	6

In the course of technical assistance missions, CELADE's staff visited 17 countries of the region.

O T H E R A D M I N I S T R A T I V E A S P E C T S

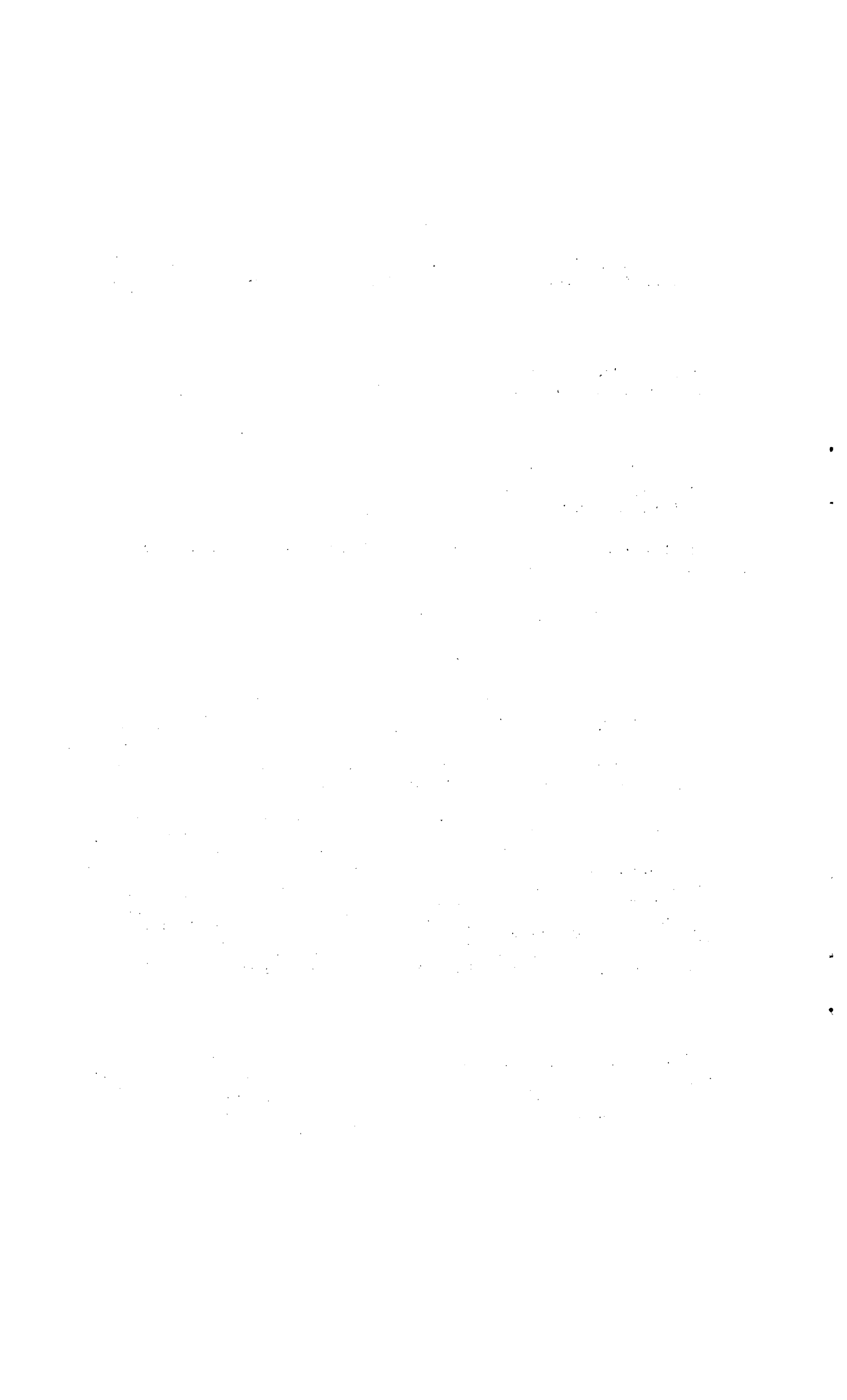
I. PREMISES

During the period under report the long-standing problem of space facing the institution in Santiago became more acute, due to the expansion of some projects and the initiation of others. As an immediate solution an agreement for the renting of an additional building was concluded for Santiago headquarters, which will provide approximately 500 m² of space. It is expected that this additional space will be available as from February 1973.

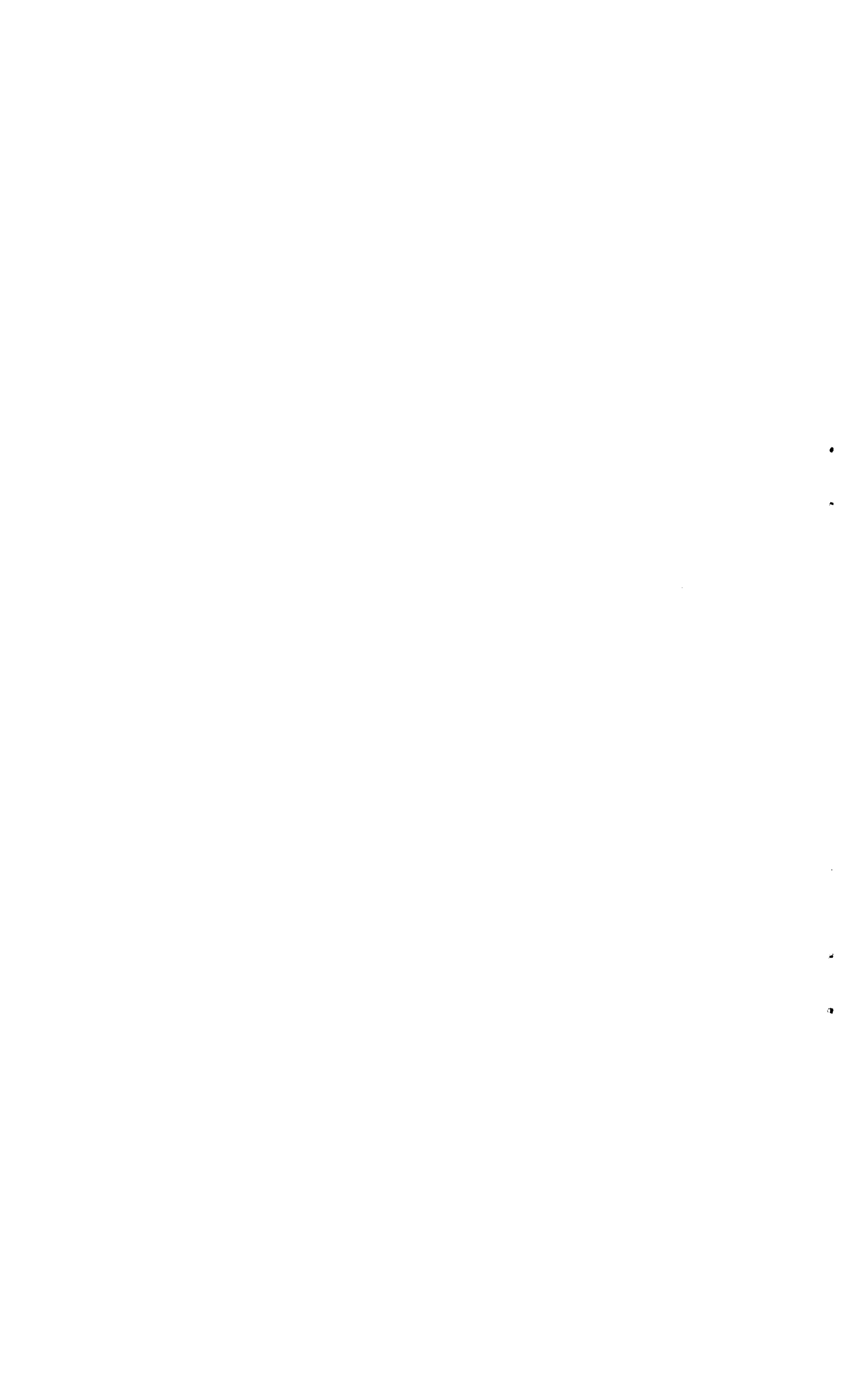
In San Jose an agreement was signed with the University of Costa Rica, through which the University agrees to continue providing accomodation for CELADE's Sub-Centre for an additional period of five years, subject to CELADE's continuation on the part of the United Nations. Bearing in mind recommendations made by the Governing Board at its Fifth Meeting, the above-mentioned agreement established that "the University will try to provide in the shortest period possible a final solution for the accomodation and installation of the Sub-Centre within the university campus. In this regard both parties will make joint efforts aimed at the building of premises which will satisfy the Sub-Centre's present requirements and future development prospects.

II. EQUIPMENT

During 1972 computing activities were expanded, both to attend the Data Bank and various research projects and fellows of the Centre. The increase in the demand for these services led to the installation of a terminal connected to an IBM computer operating with APL conversational language.



A P P E N D I X



APPENDIX I
FINAL CONSOLIDATED BUDGET, FOR 1972
(Expressed in US dollars)

A. UNITED NATIONS TRUST FUND

Item	Grand Total a/	Total	UNITED NATIONS						USAID XB-1370	Popula- tion Council	Ford Foundation XB-1511
			UNDP	UNFPA							
				TF/RLA/008 (XB-1334)	TF/RLA/006 (XB-1335)	TF/RLA/001 (XB-1256)	TF/RLA/005 (XB-1158)	TF/RLA/013 Serv. Statistics			
<u>Professional services</u>	1,262,308.54	1,166,888.54	602,500.00	298,341.00				28,000.00	162,447.54	75,600.00	
Professional staff	978,446.32	904,646.32	602,500.00	128,677.00				28,000.00	81,869.32	63,600.00	
Non-professional Staff	279,562.22	262,242.22		169,664.00					80,578.22	12,000.00	
Ad.hoc personnel	4,300.00										
<u>Equipment, supplies and materials</u>	53,005.00	51,205.00	15,000.00	19,000.00	1,740.00	2,170.00	1,735.00	3,335.00	4,696.00	3,529.00	
Office equipment	30,535.00	29,435.00	2,000.00	11,800.00	1,740.00	2,170.00	1,500.00	2,000.00	4,696.00	3,529.00	
Library books	1,000.00	1,000.00	1,000.00								
Supplies and materials	21,470.00	20,770.00	12,000.00	7,200.00			235.00	1,335.00			
<u>Other direct costs</u>	180,389.65	133,900.28		72,659.00	5,000.00		4,110.00	5,065.00	11,524.52	35,541.76	
Research expenses	86,881.13	59,541.76		16,600.00	5,000.00			2,400.00		35,541.76	
Publication's Programme	46,044.75	26,894.75		16,400.00			4,110.00	2,665.00	3,719.75		
Rent and services	47,463.77	47,463.77		39,659.00					7,804.77		
<u>Sub-contracts</u>	20,000.00	20,000.00	20,000.00								
<u>Miscellaneous</u>	57,913.00	26,363.00	18,386.00		1,621.00	136.00	1,980.00	4,240.00			
Non-professional staff	19,987.00	19,987.00	14,886.00		1,621.00		1,480.00	2,000.00			
Maintenance and operation	1,500.00	1,500.00	1,500.00								
Telecommunications, mail and local transportations	1,000.00	1,000.00	1,000.00								
Miscellaneous services	35,426.00	3,876.00	1,000.00			136.00	500.00	2,240.00			
<u>Travels</u>	27,912.00	20,512.00		10,000.00				6,070.00	3,342.00	1,100.00	
<u>Travels Meeting of the Governing Board</u>	7,000.00	7,000.00	7,000.00								
<u>Fellowships and Seminars</u>	49,461.00	25,611.00	8,366.00			6,445.00		9,000.00		1,800.00	
<u>Other expenses</u>	18,830.00										
	<u>1,676,819.19</u>	<u>1,451,479.82</u>	<u>671,252.00</u>	<u>400,000.00</u>	<u>8,361.00</u>	<u>8,751.00^{b/}</u>	<u>7,825.00</u>	<u>55,710.00</u>	<u>182,010.06</u>	<u>41,970.76^{c/}</u>	<u>75,600.00</u>

a/ Including contribution directly administered by CELADE.

b/ Balance from the Second Intensive Course in Demography for Central America and the Caribbean authorized to be used for the Course in Analysis of Insufficient Census Information, held in San Jose, Costa Rica.

c/ Including: Programme of Comparative Surveys of Rural Fertility in Latin America - Grants 071.45 (XB-1425 US \$ 10,094.76) and 071.142 (XB-1436 US\$ 22,264.00); and Programme of Comparative Surveys of Induced Abortion in Latin America - Grant 067.48 (XB-1425 US\$ 9,612.00).

APPENDIX I (continued)
 FINAL CONSOLIDATED BUDGET, FOR 1972
 (Expressed in US dollars)

B. CONTRIBUTIONS ADMINISTERED BY CELADE

Item	Grand total ^{a/}	Total	Rockefeller Foundation	IDB	Ford Foundation	IDRC Canada	Miscellaneous income
<u>Professional services</u>	<u>1,262,308.54</u>	<u>95,420.00</u>	<u>20,670.00</u>	<u>43,200.00</u>		<u>31,550.00</u>	
Professional Staff	978,446.32	73,800.00	12,650.00	38,400.00		22,750.00	
Non-professional Staff	279,552.22	17,320.00	3,720.00	4,800.00		8,800.00	
Ad-hoc personnel	4,300.00	4,300.00	4,300.00				
<u>Equipment, supplies and materials</u>	<u>53,005.00</u>	<u>1,800.00</u>				<u>1,800.00</u>	
Office equipment	30,535.00	1,100.00				1,100.00	
Library books	1,000.00						
Supplies and materials	21,470.00	700.00				700.00	
<u>Other direct costs</u>	<u>180,389.65</u>	<u>46,489.37</u>		<u>2,000.00</u>	<u>27,900.00</u>	<u>10,050.00</u>	<u>6,539.37^{b/}</u>
Research expenses	86,881.73	27,339.37			13,750.00	7,050.00	6,539.37
Publication's Programme	46,044.75	19,150.00		2,000.00	14,150.00	3,000.00	
Rent and services	47,463.77						
<u>Sub-contracts</u>	<u>20,000.00</u>						
<u>Miscellaneous</u>	<u>57,913.00</u>	<u>31,550.00</u>		<u>4,650.00</u>	<u>19,500.00</u>	<u>7,400.00</u>	
Non-professional staff	19,987.00						
Maintenance and operation	1,500.00						
Telecommunications, mail and local transportations	1,000.00						
Miscellaneous services	35,426.00	31,550.00		4,650.00	19,500.00	7,400.00	
<u>Travels</u>	<u>27,912.00</u>	<u>7,400.00</u>		<u>2,400.00</u>	<u>5,000.00</u>		
Travels Meeting of the Governing Board	7,000.00						
<u>Fellowships and Seminars</u>	<u>49,461.00</u>	<u>23,850.00</u>				<u>23,850.00</u>	
<u>Other expenses</u>	<u>18,830.00</u>	<u>18,830.00</u>					<u>18,830.00^{c/}</u>
	<u>1,676,819.19</u>	<u>225,339.37</u>	<u>20,670.00</u>	<u>52,250.00</u>	<u>52,400.00</u>	<u>74,650.00</u>	<u>25,369.37</u>

a/ Including contributions from the United Nations Trust Fund.

b/ Balance as of 31 December 1971 from grants delivered by the Population Council, prior to 31 December 1971.

c/ Income from sale of publications and services rendered.

APPENDIX I (continued)

FINAL CONSOLIDATED BUDGET FOR 1972

Contribution by the Government of Chile through the University of Chile
(Expressed in Chilean escudos)

Non professional staff	711,071,00
Equipment, supplies and materials	27,290,00
Rent and miscellaneous	56,238,00
Total University of Chile budget for 1972	794,599,00

Equivalent in US dollars	39,729.95 ^{a/}

TOTAL FINAL CELADE BUDGET FOR 1972
(Expressed in US dollars)

Contribution from the Government of Chile	39,729.95
Other contributions (in previous page)	1,676,819.19

Total	1,716,549.14

a/ Estimated at an exchange rate of E° 20,00 per dollar, adopted by the University of Chile.

APPENDIX II

UNITED NATIONS DEVELOPMENT PROGRAMME (UNDP) CONTRIBUTION

Budget and expenditures during the period 1 January-31 December 1972
(Expressed in US dollars)

Item	Allocation	Expenditures	Balance
Professional staff	602,500.00	560,000.00	42,500.00
Non-professional staff	14,886.00	18,813.09	(3,927.09) ^{a/}
Equipment and Supplies	15,000.00	24,245.65	(9,245.65) ^{b/}
Miscellaneous	3,500.00	10,521.62	(7,021.62) ^{c/}
Sub-contracts	20,000.00	8,050.02	11,949.98
Travel in connection with meeting of the Governing Board	7,000.00	3,138.81	3,861.19
Seminars	8,366.00	3,157.00	5,209.00
Total	671,252.00	627,926.19	43,325.81

a/ Over-expenditure due to bonuses not estimated when preparing the budget.

b/ Over-expenditure due to increases in equipment and supply costs.

c/ Over-expenditure due to higher costs in equipment maintenance, telecommunications services, and other minor expenditures.

APPENDIX III

TOTAL CONTRIBUTION FROM THE UNITED NATIONS FUND FOR
POPULATION ACTIVITIES (UNFPA) FOR 1972
(Expressed in US dollars)

Item	TF/RLA/008 (XB-1334) ^{a/}	TF/RLA/006 (XB-1335) ^{b/}	TF/RLA/001 (XB-1256) ^{c/}	TF/RLA/005 (XB-1158) ^{d/}	TF/RLA/013 ^{e/}	Total
Professional staff	128,677.00				28,000.00	156,677.00
Non-professional staff	169,664.00					169,664.00
Equipment and supplies	19,000.00	1,740.00	2,170.00	1,735.00	3,335.00	27,980.00
Travel	10,000.00				6,070.00	16,070.00
Participants			6,445.00		9,000.00	15,445.00
Miscellaneous	72,659.00	6,621.00	136.00	6,090.00	9,305.00	94,811.00
Total	400,000.00	8,361.00	8,751.00	7,825.00	55,710.00	480,647.00

^{a/} To finance CELADE's activities in Population Programmes.

^{b/} Programme of follow-up activities for the Seminar on Methods of Evaluation of Family Planning Programmes.

^{c/} For the course on Analysis of Insufficient Census Information, carried out in San Jose, Costa Rica.

^{d/} Programme of follow-up activities for the Seminar on the Use of Demographic Data and Studies in Planning.

^{e/} Programme of Evaluation in Family Planning. Part of the total allocation corresponding to the period May-December 1972.

APPENDIX III-1

UNITED NATIONS FUND FOR POPULATION ACTIVITIES (UNFPA) CONTRIBUTION

Project N° TF/RLA/008 (XB-1334) CELADE's Activities
in Population ProgrammesBudget and expenditures during the period 1 January-31 December 1972
(Expressed in US dollars)

Item	Allocation	Expenditure	Balance
Professional staff	128,677.00	108,536.93	20,140.07
Non-professional staff	169,664.00	144,110.21	25,553.79
Equipment and supplies	19,000.00	23,870.53	(4,870.53) ^{a/}
Travel	10,000.00	6,670.21	3,329.79
Miscellaneous	72,659.00	80,916.38	(8,257.38) ^{b/}
Total	400,000.00	364,104.26	35,895.74

a/ Over-expenditure due to increases in supply and material costs.

b/ Over-expenditure due to higher costs in rent and maintenance of buildings, and in use of Computer.

APPENDIX III-2

UNITED NATIONS FUND FOR POPULATION ACTIVITIES (UNFPA) CONTRIBUTION

Project N° TF/RLA/006 (XB-1335) Seminar on Methods of Evaluation of Family Planning

Budget and expenditures during the period 1 January - 31 December 1972
(Expressed in US dollars)

Item	Allocation	Expenditures	Balance
Equipment	1,740.00	427.10	1,312.90
Miscellaneous	6,621.00	7,286.81	(665.81)
	-----	-----	-----
Total	8,361.00	7,713.91	647.09

APPENDIX III-3

UNITED NATIONS FUND FOR POPULATION ACTIVITIES (UNFPA) CONTRIBUTION

Project N° TF/RLA/001 (XB-1256) Course on Analysis of Insufficient
Census Information, San JoseBudget and expenditures during the period 1 January-31 December 1972
(Expressed in US dollars)

Item	Allocation	Expenditure	Balance
Participants (Professors and Fellows)	6,445.00	6,149.61	295.39
Equipment and Supplies	2,170.00	1,787.95	382.05
Miscellaneous	136.00	638.54	(502.54)
Total	8,751.00	8,576.10	174.90

APPENDIX III-4

UNITED NATIONS FUND FOR POPULATION ACTIVITIES CONTRIBUTION

Project No TF/RLA/005 (XB-1158) Seminar on the Use of Demographic
Data and Studies in Planning

Budget and expenditures during the period 1 January-31 December 1972
(Expressed in US dollars)

Item	Allocation	Expenditures	Balance
Equipment and Supplies	1,735.00	1,610.00	125.00
Miscellaneous	6,090.00	5,937.80	152.20
Total	7,825.00	7,547.80	277.20

APPENDIX III-5

UNITED NATIONS FUND FOR POPULATION ACTIVITIES (UNFPA) CONTRIBUTION

Project N° TF/RLA/013 Programme of Evaluation in Family PlanningBudget and expenditures during the period 1 May-31 December 1972
(Expressed in US dollars)

Item	Allocation for the Period ^{a/} 1/5-31/12/72	Expenditures	Balance
Participants	9,000.00	-	9,000.00
Miscellaneous	9,305.00	2,106.58	7,198.42
Equipment and Supplies	3,335.00	717.38	2,617.62
Professional staff	20,000.00	6,148.79	21,851.21
Travel	6,070.00	-	6,070.00
Total	55,710.00	8,972.75	46,737.25

^{a/} Part of the total allocation corresponding to the period May-December 1972.

APPENDIX IV

AGENCY FOR INTERNATIONAL DEVELOPMENT CONTRIBUTION
Project XB-1370

Budget and expenditures during the period 1 January-30 June 1972
(Expressed in US dollars)

Item	Allocation	Expenditures	Balance
Professional staff	81,869.32	83,058.09	(1,188.77) ^{b/}
Travel	3,342.00	936.79	2,405.21
Equipment	4,695.00	6,520.49	(1,824.49) ^{c/}
Miscellaneous	92,102.74	91,920.59 ^{a/}	182.15
Total	182,010.06	182,535.96	(525.90)

^{a/} Including Non-professional staff expenditures amounting to US\$ 80,637.10, publication expenditures amounting to US\$ 2,553.07, and rent and services expenditures amounting to US\$ 8,730.42.

^{b/} Over-expenditure due to higher professional staff costs.

^{c/} Over-expenditure due to increases in equipment and supply costs.

APPENDIX V

STATEMENT OF ALLOCATIONS FROM THE POPULATION COUNCIL DELIVERED TO THE TRUST FUND FOR
 THE PROGRAMMES OF COMPARATIVE SURVEYS OF RURAL FERTILITY AND INDUCED ABORTION IN LATIN AMERICA, 1972
 (Expressed in US\$ dollars)

Programmes	Balance as of 31 12/71	Entered in 1972	Total available allocation	Expenditures	Balance
(XB-1424)					
Programme of Comparative Surveys of Rural Fertility in Latin America, D.71.45	10,094.76	-	10,094.76	9,828.37	266.39
(XB-1436)					
Programme of Comparative Surveys of Rural Fertility in Latin America, D.71.142		22,264.00	22,264.00	14,437.97	7,826.03
(XB-1425)					
Programme of Comparative Surveys of Induced Abortion in Latin America, D.67.48	9,612.00	-	9,612.00	4,457.88	5,154.12
Total	19,706.76	22,264.00	41,970.76	28,724.22	13,246.54 ^{a/}

^{a/} Balances earmarked for financing the continuation of these projects in 1973

APPENDIX VI

FORD FOUNDATION (GRANT 680-0754) CONTRIBUTION

Project N°XD-1511

Allocation and expenditures during the period 1 January-31 December 1972
(Expressed in US dollars)

Item	Allocation	Expenditures	Balance
Professional staff	63,600.00	-	63,600.00
Miscellaneous	12,000.00	4,098.19	7,901.81
Total	75,600.00	4,098.19	71,501.81

APPENDIX VII

CONTRIBUTION (IN KIND) FROM THE UNIVERSITY OF CHILE

Allocation and expenditures during the period 1 January-31 December 1972
(In Chilean Escudos)

Item	Allocation	Expenditures	Balance
Non professional staff	711,071,00	711,071,00	-
Equipment and Supplies	27.290,00	25.913,50	376,50
Rent and Miscellaneous	56.238,00	56.238,00	-
	<hr/>	<hr/>	<hr/>
Total	794.599,00	794.222,50	376,50
	-----	-----	-----
Equivalent in US dollars	39,729,95	39,711,13	18,82

a/ Converted at the exchange rate of E° 20 per dollar, adopted by the University of Chile.

APPENDIX VIII

UNITED NATIONS FUND FOR POPULATION ACTIVITIES CONTRIBUTION

Project No TF/HOM/002 (XD-1161) Honduras National Demographic SurveyAllocation and expenditures during period 1 January-31 December 1972

(Expressed in US. dollars)

Item	Allocation	Expenditures	Balance
Demographer	3,050.00	2,260.96	789.04
Consultant	<u>3,050.00</u>	<u>125.63</u>	<u>2,924.37</u>
Total	6,100.00	2,386.59	3,713.41

APPENDIX IX

UNITED NATIONS FUND FOR POPULATION ACTIVITIES CONTRIBUTION

Project N° TF/CUB/001 (XD - 1395) First National Course in Demography - CubaAllocation and expenditures during the period 1 January - 31 December 1972

(Expressed in US dollars)

Item	Allocation	Expenditures	Balance
Miscellaneous	1,450.00	753.40	696.60
Total	1,450.00	753.40	696.60

Project N° TF/CUB/002 Second National Course in Demography - CubaAllocation and expenditures during the period September - December 1972

(Expressed in US dollars)

Item	Allocation	Expenditures	Balance
Travel, CELADE personnel	4,700.00	5,368.07	(668.07)
Books	1,000.00	-	1,000.00
Miscellaneous	200.00	-	200.00
Total	5,900.00	5,368.07	531.93

APPENDIX X

UNITED NATIONS FUND FOR POPULATION ACTIVITIES CONTRIBUTION
Project N°TF/RLA/015 Social Research Programme on Population Problems
Relevant to Population Policies in Latin America

Allocation and expenditures during the period October - December 1972

(Expressed in US dollars)

Item	Allocation	Expenditure	Balance
Professional staff	36,075.00	-	36,075.00
Non-professional staff	3,367.00	-	3,367.00
	<hr/>	<hr/>	<hr/>
Total	39,442.00	-	39,442.00

APPENDIX XI

STATEMENT OF OUTSTANDING OBLIGATION OF PARTICIPATING COUNTRIES

Project RLA/66/050 - CELADE
(Expressed in US dollars)

Country	Due date	ccc-Portion due	Total due
ARGENTINA	1 January 1973	US\$ 825	US\$ 825
CHILE	1 January 1969	1,000	
	1 " 1970	6,882	
	1 " 1971	5,882	
	1 " 1972	2,510	
	1 " 1973	2,510	19,784
COSTA RICA	-	-	-
ECUADOR	1 January 1963	1,049	
	1 " 1969	1,049	
	1 " 1970	1,049	
	1 " 1971	380	
	1 " 1972	380	
	1 " 1973	380	4,287
EL SALVADOR	1 January 1967	1,574	
	1 " 1968	787	
	1 " 1969	787	
	1 " 1970	787	
	1 " 1971	290	
	1 " 1972	290	
	1 " 1973	290	4,805
GUATEMALA	-	-	-
HONDURAS	1 January 1972	290	
	1 " 1973	290	500
NICARAGUA	1 January 1973	290	290
PERU	1 January 1973	380	380
VENEZUELA	1 January 1973	400	400
PANAMA	1 January 1973	290	290
COLOMBIA	1 January 1970	929.58	
	1 " 1971	1,967	
	1 " 1972	720	
	1 " 1973	720	4,336.58
MEXICO	1 January 1971	2,294	
	1 " 1972	825	
	1 " 1973	825	3,911
		TOTAL ccc. Due	40,011.58

ANEXO XII

PROFESSIONAL AND NON-PROFESSIONAL STAFF AS OF 31.12.72. DISTRIBUTION BY SOURCES OF FINANCING
 PERSONAL PROFESIONAL Y NO PROFESIONAL AL 31.12.72. DISTRIBUCION POR FUENTES DE FINANCIAMIENTO
 SANTIAGO - SAN JOSE

CODE NUMBER	NAME	NATIONALITY	POST KEY CODE	TITLE	GRADE/STEP	DUTY STATION
I. UNDP (RLA-058)						
1. <u>Professional staff</u>						
1.	Miró, Carmen	PAN.	SA	Director CELADE	L. 7-II	Santiago ^{a/}
2.	Somoza, Jorge	ARG.	SB	Deputy Director	P. 5-VI	Santiago ^{a/}
3.	Elizaga, Juan Carlos	ARG.	SC	Senior Demographer	L. 5-VIII	Santiago
4.	Conning, Arthur	USA.	SD	Senior Demographer	L. 4-V	Santiago
5.	Bocaz, Albino	CHI.	SE	Demographic Statistician	L. 4-XI	Santiago
6.	García, María Luisa	CHI.	SF	Public Health Physician	L. 4-V	Santiago
7.	Mellon, Roger	HAI.	SG	Demographer	L. 3-VIII	Santiago
8.	Arretx, Carmen	CHI.	SH	Demographer	L. 2-XI	Santiago
9.	Macció, Guillermo	URU.	SI	Assistant Director Subcentre	L. 4-II	San José
10.	Nieto, Bolívar	ECU.	SJ	Demographer	L. 3-X	San José
11.	Recruitment pending	-	SK	Chief Administrative Officer	-	Santiago
12.	Lopes, Valdecir	BRA.	SL	Senior Demographer	L. 4-VI	Santiago
13.	Morales, Julio	CHI.	SN	Demographer	L. 3-VII	Santiago
14.	Castro, Héctor	CHI.	SN	Occasional Lecturer	-	Santiago
	Azofeifa, Inés	CRI.		Occasional Lecturer	-	San José
	Baptista, J.	CRI.		Occasional Lecturer	-	San José
15.	Camisa, Zulma	ARG.	SO	Demographer	L. 3-VI	San José
16.	Ortega, Antonio	ARG.	SP	Demographer	L. 3-II	San José
17.	Arévalo, Jorge	ARG.	SQ	Demographer	L. 3-VI	Santiago
18.	Alens, Alex	SAL.	SR	Demographer	L. 2-IX	San José
19.	Mascimento, Carlos	CHI.	SS	Chief Publ. and Editorial Services	L. 3-II	Santiago
20.	Gaslonde, Santiago	VEN.	ST	Physician Demographer	L. 5-IV	Santiago
21.	Recruitment pending	-	SU	Documentation Expert	-	Santiago

^{a/} Secondment to CELADE through 31 December 1972.

CODE NUMBER	NAME	NATIONALITY	POST KEY CODE	TITLE	GRADE/STEP	DUTY STATION
<u>2. Non-professional staff</u>						
22.	Rojas, Sonia	CHI.		Senior Administrative Assistant	G. 8-III	Santiago
23.	Carmona, Pedro	CHI.		Finance Assistant	G. 6-III	Santiago
24.	Maestre, José María	ARG.		Offset Operator	G. 3-II	Santiago
25.	Valdés, Eduardo	CHI.		Driver-Messenger	G. 3-I	Santiago
26.	Cook, Jorge	CHI.		Messenger	G. 2-I	Santiago
27.	Delgado, Gilberto	CHI.		Messenger	G. 2-I	Santiago
<u>II. 1. UNFPA - RLA-008 (XB-1334)</u>						
<u>1. Professional staff</u>						
28.	Fucaraccio, Angel	ARG.		Economist	L. 3-VI	Santiago
29.	Peralta, René	CHI.		Computer Expert	L. 3-IV	Santiago
30.	Lenis, Nelson	COL.		Physician Demographer	L. 3-III	San José
31.	González, Gerardo	CHI.		Sociologist	L. 3-II	Santiago
32.	Alberts, Joop	HOL.		Junior Demographer	L. 2-VIII	San José
33.	Vásquez, Santiago	CHI.		Systems Analyst	L. 2-IV	Santiago
34.	Pujol, José Miguel	CHI.		Junior Demographer	L. 2-III	Santiago
35.	García, Agustín	PAN.		Junior Demographer	L. 2-II	San José
36.	Kracht, Sylvia	CHI.		Special Assist. to the Director	L. 2-II	Santiago
37.	Vidal, Jorge	CHI.		Junior Demographer	L. 2-II	Santiago
38.	Recruitment pending	-		Administrative Officer	-	Santiago
39.	Recruitment pending	-		Economist	-	San José
40.	Recruitment pending	-		Administrative Officer	-	San José
<u>2. Non-professional staff</u>						
41.	Soto, Zaida	CHI.		Research Assistant	G. 8-I	Santiago
42.	Samsing, Patricia	CHI.		Assistant Editor	G. 7-IX	Santiago
43.	Dfaz, Domingo	CHI.		Administrative Assistant	G. 7-IV	Santiago
44.	Forner, Sonia	CHI.		Administrative Assistant	G. 7-IV	Santiago
45.	Frey, Patricio	CHI.		Research Assistant	G. 7-IV	Santiago

CODE NUMBER	NAME	NATIONALITY	POST KEY CODE	TITLE	GRADE/STEP	DUTY STATION
46.	Trautmann, Lucía	CHI.		Administrative Assistant	G. 7-III	Santiago
47.	Ortiz, Enriqueta	CHI.		Senior Secretary	G. 6-VII	Santiago
48.	Riveros, Elsa	CHI.		Senior Secretary	G. 6-VII	Santiago
49.	Wulff, Erica	CHI.		Senior Secretary	G. 6-VII	Santiago
50.	Labbé, Eugenia	CHI.		Assistant Librarian	G. 6-VI	Santiago
51.	Anguita, Ximena	CHI.		Senior Documents Clerk	G. 6-V	Santiago
52.	Hoya, Oscar	CHI.		Junior Statistician	G. 6-V	Santiago
53.	Corbalán, Iris	CHI.		Research Assistant	G. 6-IV	Santiago
54.	Reyes, Gladys	CHI.		Senior Secretary	G. 6-III	Santiago
55.	Vuolo, Valter	BRA.		Research Assistant	G. 6-II	Santiago
56.	Bussi, María Inés	CHI.		Research Assistant	G. 6-II	Santiago
57.	Ortizar, Rosa María	CHI.		Supervisor Documentation and Distribution Section	G. 6-II	Santiago
58.	Aybar, Angelina	DOM.		Proofreader	G. 5-IX	Santiago
59.	Sateler, María Cristina	CHI.		Assistant Library Clerk	G. 5-IX	Santiago
60.	Bermúdez, Alicia	CRI.		Research Assistant	G. 5-V	San José
61.	Zurita, M. Angélica	CHI.		Bilingual Secretary	G. 5-V	Santiago
62.	Bozt, Zaida	CHI.		Registry Clerk	G. 5-IV	Santiago
63.	Rosenbluth, Sonia	CHI.		Bilingual Secretary	G. 5-III	Santiago
64.	Cortés, Blanca	CHI.		Travel Clerk	G. 5-III	Santiago
65.	Quirós, Franklin	CRI.		Finance Assistant	G. 5-II	San José
66.	Orellana, Hernán	CHI.		Statistical Clerk	G. 5-II	Santiago
67.	Figueroa, Rosa	CHI.		Bilingual Secretary	G. 5-II	Santiago
68.	Blanch, Raúl	CHI.		Finance Clerk	G. 5-I	Santiago
69.	Chaverry, Mayra	CRI.		Secretary	G. 4-IX	San José
70.	Saavedra, Verónica	CHI.		Bilingual Typist	G. 4-VI	Santiago
71.	Berner, Olivia	CHI.		Bilingual Typist	G. 4-VI	Santiago
72.	Santibañez, Eugenia	CHI.		Bilingual Typist	G. 4-VI	Santiago
73.	Portales, Patricia	CHI.		Senior Telephone Operator	G. 4-VI	Santiago
74.	Rahmer, Adelaida	CHI.		Monolingual Typist	G. 4-V	Santiago
75.	Couchot, Ivonne	CHI.		Bilingual Secretary	G. 4-V	Santiago
76.	Morales, Ana Isabel	CRI.		Secretary	G. 4-V	San José

(Continued)

Page 4 of 9

CODE NUMBER	NAME	NATIONALITY	POST KEY CODE	TITLE	GRADE/STEP	DUTY STATION
77.	Jiménez, Ana Lucía	CRI.		Senior Library Clerk	G. 4-V	San José
78.	Sánchez, Raquel	CHI.		Bilingual Secretary	G. 4-IV	Santiago
79.	Nadal, Victoria	CHI.		Monolingual Typist	G. 4-IV	Santiago
80.	Díaz, Sonia	CHI.		Bilingual Typist	G. 4-IV	Santiago
81.	Cerda, Ximena	CHI.		Bilingual Typist	G. 4-IV	Santiago
82.	Olivares, Sergio	CHI.		Junior Clerk	G. 4-III	Santiago
83.	Van der Schraff, Angélica	CHI.		Monolingual Typist	G. 4-III	Santiago
84.	Recart, Adriana	CHI.		Monolingual Typist	G. 4-III	Santiago
85.	Donoso, Bárbara	CHI.		Bilingual Typist	G. 4-III	Santiago
86.	Núñez, Alejandro	CHI.		Senior Receptionist	G. 4-II	Santiago
87.	Valdés, Ana Marfa	CHI.		Bilingual Typist	G. 4-II	Santiago
88.	Braithwaite, Julie	USA.		Bilingual Typist	G. 4-II	Santiago
89.	De Barros, Lenise	BRA.		Registry Clerk	G. 4-II	Santiago
90.	Arias, Enrique	CRI.		Statistical Clerk	G. 3-IX	San José
91.	Abarca, Nuria	CRI.		Bilingual Typist	G. 3-VI	San José
92.	Bravo, José Miguel	CHI.		Mimeograph Operator	G. 3-IV	Santiago
93.	Elmes, Mario	CHI.		Night Watchman	G. 3-III	Santiago
94.	León, Juan	CHI.		Equipment-Supplies Clerk	G. 3-II	Santiago
95.	Gonçalves, Consuelo	CHI.		Telephone Operator	G. 3-II	Santiago
96.	Ilabaca, Carlos	CHI.		Assistant Electrician	G. 3-II	Santiago
97.	Jones, Alejandro	CHI.		Receptionist	G. 3-II	Santiago
98.	Rodríguez, Mario	CHI.		Bookbinder	G. 3-II	Santiago
99.	Méndez, Vilma	CRI.		Monolingual Secretary	G. 3-I	San José
100.	Araya, Juanita	CRI.		Secretary	G. 3-I	San José
101.	Bobadilla, Humberto	CHI.		Driver	G. 2-VII	Santiago
102.	Herrera, Luis	CRI.		Driver	G. 2-VII	San José
103.	González, José A.	CHI.		Custodial	G. 2-V	Santiago
104.	Aravena, Guillermo	CHI.		Messenger	G. 2-IV	Santiago
105.	Gabert, Marjorie	CRI.		Clerk Receptionist	G. 2-IV	San José
106.	Gormaz, Patricio	CHI.		Messenger	G. 2-II	Santiago
107.	González, Daniel	CHI.		Junior Mimeograph Operator	G. 2-II	Santiago
108.	Martínez, Luis A.	CHI.		Messenger	G. 2-II	Santiago

(Continued)

Page 5 of 9

CODE NUMBER	NAME	NATIONALITY	POST KEY CODE	TITLE	GRADE/STEP	DUTY STATION
109.	Martínez, Arnaldo	CHI.		Messenger	G. 2-II	Santiago
110.	Quintanilla, Hugo	CHI.		Messenger	G. 2-I	Santiago
111.	Macías, Guillermo	CHI.		Messenger	G. 2-I	Santiago
112.	Nachuca, Manuel	CHI.		Messenger	G. 2-I	Santiago
113.	Leal, Elder	CRI.		Mimeograph Operator	G. 1-VII	San José
114.	Portuguóz, Orlando	CRI.		Messenger	G. 1-IV	San José
115.	Fuentes, Rafael	CHI.		Custodial	G. 1-II	Santiago
116.	Recruitment pending	-		Bilingual Secretary	-	Santiago
2. U. CHILE/UNFPA (XB-1334)						
1. <u>Non-professional staff</u>						
117.	Lartiga, Héctor	CHI.		Senior Account Assistant	G. 8-II	Santiago
118.	Carrasco, Enrique	CHI.		Research Assistant	G. 7-III	Santiago
119.	Calderón, Juan José	CHI.		Junior Statistician	G. 6-IV	Santiago
120.	Medina, Néstor	CHI.		Senior Documents Clerk	G. 6-II	Santiago
121.	Olivares, Fernando	CHI.		Research Assistant	G. 5-III	Santiago
122.	Martínez, José	CHI.		Senior Driver	G. 5-II	Santiago
123.	Serrano, Fernando	CHI.		Custodial Foreman	G. 5-II	Santiago
124.	Vega, Rudelio	CHI.		Custodial Foreman	G. 5-II	Santiago
125.	Pastén, Vidal	CHI.		Offset Operator	G. 4-II	Santiago
126.	González, José Miguel	CHI.		Equipment-Supplies Clerk	G. 3-II	Santiago
3. UNFPA (TF/RLA/013)						
1. <u>Professional staff</u>						
127.	Vaossen, Martinus	HOL.		Demographer	L. 3-I	Santiago
128.	Recruitment pending	-		Statistician	-	Santiago

CODE NUMBER	NAME	NATIONALITY	POST KEY CODE	TITLE	GRADE/STEP	DUTY STATION
<u>2. Non-professional staff</u>						
129.	Ruiz, Carmen	CHI.		Intermediate Clerk	G.5-1	Santiago
130.	Petric, Ana Marfa	CHI.		Bilingual Typist	G.4-VI	Santiago
<u>4. UNFPA (TF/RLA/014) ELAS/CELADE</u>						
<u>1. Professional staff</u>						
131.	Torrado, Susana	ARG.		Sociologist	L.3-IV	Santiago
132.	Recruitment pending	-		Assigned Expert	-	Santiago
<u>2. Non-professional staff</u>						
133.	Lonzi, Vittorio	ITA.		Research Assistant	-	Santiago
<u>5. UNFPA (XB-1377)</u>						
<u>1. Professional staff</u>						
134.	Isea, Pedro b/	VEN.		Assigned Expert	L.4-I	Sn. José
<u>III. USAID (XB-1370)</u>						
<u>1. Professional staff</u>						
135.	Muschkin, Ana Rosa	PAN.		Administrative Officer	L.3-IV	Sn. José
136.	Campanario, Paulo	BRA.		Economist	L.2-1	Sn. José
<u>IV. POPULATION COUNCIL (XB-1436) PECFAL-RURAL</u>						
<u>1. Non-professional staff</u>						
137.	Torrealba, César	CHI.		Research Assistant	G.7-II	Santiago

b/ ECLA staff member detailed to CELADE Sub-Centre

(Continued)

Page 7 of 9

CODE NUMBER	NAME	NATIONALITY	POST KEY CODE	TITLE	GRADE/STEP	DUTY STATION
138.	Packer, Abel	DRA.		Research Assistant	G.6-III	Santiago
139.	Leyton, Mónica	CHI.		Research Assistant	G.6-I	Santiago
140.	Vicuña, Raquel	CHI.		Bilingual Secretary	G.4-VI	Santiago
	<u>PEAL</u>					
	1. <u>Non-professional staff</u>					
141.	Sust, Pedro Hugo	CHI.		Collaborator	-	Santiago
	<u>V. NETHERLANDS GOVERNMENT</u>					
	<u>(XB-0034)</u>					
	1. <u>Professional staff</u>					
142.	De Jong, Johanna	HOL.		Associate Expert	L.1-III	Santiago
143.	Dierckxsens, Wilhelmus	HOL.		Associate Expert	L.1-III	San José
	<u>VI. IGD - URBAN GROWTH PROJECT</u>					
	1. <u>Professional staff</u>					
144.	Herrera, Ligia	PAN.		Geographer	L.4-II	Santiago
145.	Pecht, Maldomiro	DRA.		Economist	L.3-II	Santiago
	2. <u>Non-professional staff</u>					
146.	Ferrer, Mónica	CHI.		Assistant Library Clerk	G.5-II	Santiago

(Continued)

Page 8 of 9

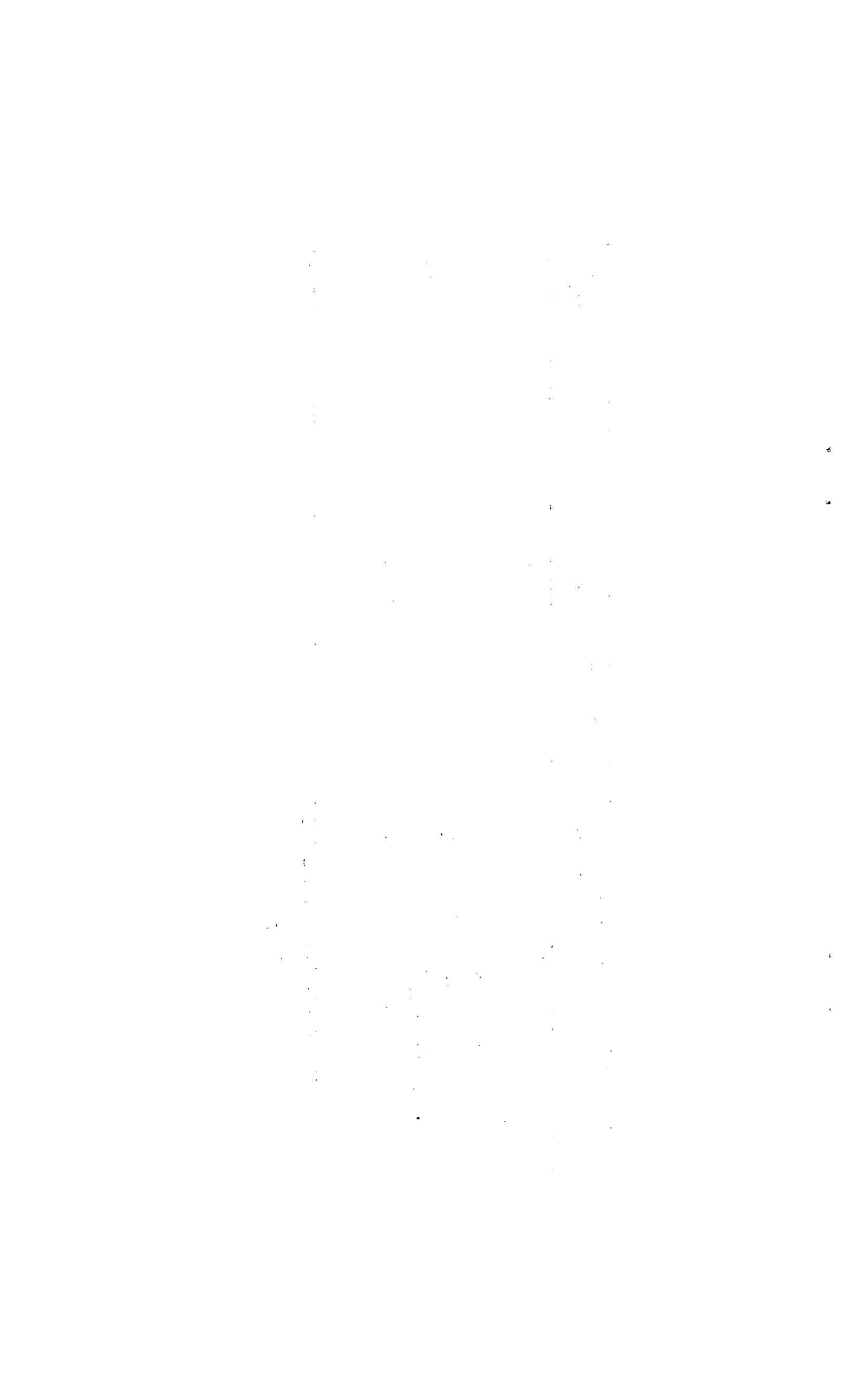
CODE NUMBER	NAME	NATIONALITY	POST KEY CODE	TITLE	GRADE/STEP	DUTY STATION
<u>VII. ROCKEFELLER FOUNDATION</u>						
<u>POPULATION POLICIES</u>						
1. <u>Professional staff</u>						
147.	Errázuriz, Margarita	CHI.		Sociologist	L.1-II	Santiago
148.	Quirós, Luis	CHI.		Political Scientist	L.1-II	Santiago
2. <u>Non-professional staff</u>						
149.	Charalamby, M. Helena	CHI.		Typist	G.4-II	Santiago
<u>VIII. INTERNATIONAL DEVELOPMENT</u>						
<u>RESEARCH CENTRE (IDRC)</u>						
1. <u>Professional staff</u>						
150.	Simmons, Alan	CAN.		Sociologist	L.4-I	Santiago
2. <u>Non-professional staff</u>						
151.	Culagowski, Mauricio	CHI.		Research Assistant	G.7-I	Santiago
<u>IX. FORD FOUNDATION (XB-1511)</u>						
1. <u>Professional staff</u>						
152.	Recruitment pending	-		Social Scientist	-	Santiago
153.	Recruitment pending	-		Social Scientist	-	Santiago
154.	Recruitment pending	-		Statistician	-	Santiago
2. <u>Non-professional staff</u>						
155.	Aguirre, Nelson	CHI.		Research Assistant	G.7-I	Santiago
156.	Recruitment pending	-		Research Assistant	-	Santiago

(Continued)

Page 9 of 9

CODE NUMBER	NAME	NATIONALITY	POST-KEY CODE	TITLE	GRADE/STEP	DUTY STATION
	X. <u>OAS</u>					
	1. <u>Professional staff</u>					
157.	Alvarez, Leonel ^{c/}	CHI.		Assigned Expert	P.4-V	Santiago
	XI. <u>UNIVERSITY OF MICHIGAN</u>					
150.	Santee, Barbara	USA.		Visiting Researcher	-	Santiago

^{c/} OAS staff member detailed to CELADE.



Anexo XIII

CELADE

MANNING TABLE AS OF 31 DECEMBER 1972

PLANTA AL 31 DE DICIEMBRE DE 1972

CODE N°	NAME	NAT.	MARITAL STATUS	POST KEY CODE AND FUNCTIONAL TITLE	EOD DATE	TYPE APPT.	LEVEL STEP	LNG. ALL.	NEXT SAL. INC.	CONTRACT EXPIRES	FINANCING	REMARKS
<u>COORDINATION AREA N° 1</u>												
1	Miró, Carmon A.	PAN.	S	Director CELADE	SA	30. 4.58	LT	L.7-II	-	Jul.73	31.12.72	RLA-058
2	Kracht, Sylvia	CHI.	M	Special Assistant to the Director		1. 7.64	FT	L.2-II	1	May.73	31.12.72	RLA-008
3	Petric, Ana Marfa	CHI.	S	Bilingual Typist		16. 6.71	FT	G.4-VI	-	Jun.73	31.12.72	RLA-013
<u>PUBLIC HEALTH AND POPULATION SECTOR</u>												
4	Gaslode, Santiago	VEN.	M	Physician Demographer	ST	1. 3.69	IT	L.5-IV	-	Mar.73	31.12.72	RLA-058
5	Bocaz, Albino	CHI.	M	Demographic Statistician	SE	2. 5.62	LT	L.4-XI	-	May.73	31.12.72	RLA-058
6	García, Marfa Luisa	CHI.	M	Public Health Physician	SF	1. 3.69	IT	L.4-V	-	Mar.73	31.12.72	RLA-058
7	Recruitment Pending			Statistician								RLA-013
8	Vaessen, Martinus	HCL.	M	Demographer		18. 8.72	IT	L.3-I	-	Aug.73	18. 8.73	RLA-013
9	Carrasco, Enrique	CHI.	M	Research Assistant		10. 8.62	SP	G.7-III	-	Apr.73	31.12.72	U.Chile/UN
10	Zurita, Marfa Angélica	CHI.	S	Bilingual Secretary		14. 3.66	FT	G.5-V	1	Sep.73	31.12.72	RLA-008
11	Rosenbluth, Sonia	CHI.	M	Bilingual Secretary		20. 6.68	FT	G.5-III	-	Sep.73	31.12.72	RLA-008
12	Ruiz, Carmen	CHI.	M	Intermediate Clerk		15.11.72	FT	G.5-I	0	Nov.73	31.12.72	RLA-013
13	Santec, Barbara	USA.	D	Visiting Researcher		1.10.71	-	-	-	-	30.9 .73	U-Michigan
14	Soto, Zaida	CHI.	S	Research Assistant		1.5 .72	FT	G.8-I	-	Sep.73	31.12.72	RLA-008
<u>HUMAN FERTILITY SECTOR</u>												
15	Conning, Arthur	USA.	M	Senior Demographer	SD	7.10.70	IT	L.4-V	-	Oct.73	31.12.72	RLA-058
16	Simmons, Alan	CAN.	M	Sociologist		15. 8.72	FT	L.4-I	-	Aug.73	14. 8.73	IDRC
17	De Jong, Johanna	HCL.	M	Associate Expert		10. 1.71	IT	L.1-III	-	Jan.73	9. 1.73	XB-0034
18	Torrealba, César	CHI.	M	Research Assistant		1. 1.71	FT	G.7-II	0	Nov.73	31.12.72	XD-1436
19	Culagowski, Mauricio	CHI.	M	Research Assistant		1. 5.72	FT	G.7-I	-	May.73	30. 4.73	IDRC

(continued)

CODE Nº	NAME	NAT.	MARITAL STATUS	POST KEY CODE AND FUNCTIONAL TITLE	
20	Leyton, Mónica	CHI.	M	Research Assistant	
21	Borner, Olivia	CHI.	S	Bilingual Typist	
22	Donoso, Barbara	CHI.	M	Bilingual Typist	
<u>POPULATION POLICIES SECTOR</u>					
23	González, Gerardo	CHI.	M	Sociologist	
24	Errázuruz, Margarita	CHI.	M	Sociologist	
25	Quirós, Luis	CHI.	S	Political Scientist	
26	Bussi, María Inés	CHI.	M	Research Assistant	
27	Couchot, Ivonne	CHI.	S	Bilingual Secretary	
<u>ELAS-CELADE Exchange Programme</u>					
28	Torrado, Susana	ARG.	M	Sociologist	
29	Recruitment pending			Assigned Expert	
30	Lonzi, Vittorio	ITA.	S	Research Assistant	
<u>COORDINATION AREA Nº 2</u>					
31	Lopes, Valdecir	BRA.	M	Senior Demographer	SI
32	Santibáñez, Eugenia	CHI.	S	Bilingual Typist	
<u>COMPUTER SERVICES SECTOR</u>					
33	Peralta, René	CHI.	M	Computer Expert	
34	Vicuña, Raquel	CHI.	S	Bilingual Secretary	
<u>CALCULATORS GROUP SECTOR</u>					
35	Calderón, Juan José	CHI.	M	Junior Statistician	
36	Moya, Oscar	CHI.	M	Junior Statistician	
37	Crellana, Hernán	CHI.	S	Statistical Clerk	

EOB DATE	TYPE APPT.	LEVEL STEP	ING. ALL.	NEXT SAL. INC.	CONTRACT EXPIRES	FINANCING	REMARKS
7. 9.72	FT	G.5-I	-	Sep.73	31.12.72	XB-1436	
21. 6.71	FT	G.4-VI	-	Jun.73	31.12.72	RLA-008	
1. 5.72	FT	G.4-III	-	May.73	31.12.72	RLA-008	
7.11.70	IT	L.3-II	-	May.73	31.12.72	RLA-008	
7. 9.71	FT	L.3-II	-	Sep.73	6. 3.73	Rockefeller F.	
1.10.71	FT	L.1-II	-	Oct.73	31. 3.73	Rockefeller F.	
15.10.70	FT	G.6-II	-	Jul.73	31.12.72	RLA-008	
3. 7.72	FT	G.4-V	-	Aug.73	31.12.72	RLA-008	
1. 5.72	IT	L.3-IV	-	May.73	30. 4.73	RLA-014	
1. 8.72	SS	-	-	-	-	RLA-014	
L 24. 2.68	IT	L.4-VI	-	Feb.73	31.12.72	RLA-058	
9. 8.71	FT	G.4-VI	1	Aug.73	31.12.72	RLA-008	
1. 9.71	IT	L.3-IV	-	Sep.73	31.12.72	RLA-008	
16.12.70	FT	G.4-VI	1	Nov.73	31.12.72	XB-1436	
28. 4.69	SP	G.6-IV	-	Mar.73	31.12.72	U.Chilo/UN	
1. 9.70	FT	G.6-V	-	May.73	31.12.72	RLA-008	
6. 7.70	FT	G.5-II	-	May.73	31.12.72	RLA-008	

(Continued)

CODE Nº	NAME	NAT.	MARITAL STATUS	POST KEY CODE AND FUNCTIONAL TITLE
<u>COMPUTER PROGRAMMING AND ANALYSIS SECTION</u>				
38	Vásquez, Santiago	CHI.	M	Systems Analyst
39	Frey, Patricio	CHI.	M	Research Assistant
40	Packer, Abel	DRA.	S	Research Assistant
41	Vuolo, Valtor	DRA.	M	Research Assistant
42	Sust, Pedro H.	CHI.	M	Collaborator
<u>COORDINATION AREA Nº 3</u>				
43	Elizaga, Juan Carlos	ARG.	M	Senior Demographer
44	Wulff, Erica	CHI.	M	Senior Secretary
45	Charalamby, Marfa Helena	CHI.	S	Typist
<u>TEACHING COORDINATION SECTOR</u>				
46	Hellon, Roger	HAI.	M	Demographer
47	Riveros, Elsa	CHI.	M	Senior Secretary
48				Occasional Lecturer
<u>INTERNATIONAL MIGRATION</u>				
49	Arévalo, Jorge	ARG.	M	Demographer
50	Recruitment Pending	-	-	Social Scientist
51	Recruitment Pending	-	-	Statistician
52	Recruitment Pending	-	-	Research Assistant
53	Corbalán, Iris	CHI.	S	Research Assistant
<u>INTERRELATIONS AND MODELS SECTOR</u>				
54	Fucaraccio, Angel	ARG.	M	Economist
55	Recruitment Pending	-	-	Social Scientist
56	Aguirre, Nelson	CHI.	M	Research Assistant

	EOB DATE	TYPE APPT.	LEVEL STEP	LNG ALL.	NEXT SAL INC.	CONTRACT EXPIRES	FINANCING	REMARKS
	1. 9.72	IT	L.2-IV	-	Sep.73	31.12.72	RLA-C08	
	1.10.69	FT	G.7-IV	-	Mar.73	31.12.72	RLA-C08	
	7.12.70	FT	G.6-III	-	Dic.73	31.12.72	XB-1435	
	1. 5.71	FT	G.6-II	-	May.73	31.12.72	RLA-C08	
	1. 9.72	SS	-	-	-	31.12.72	Pop. Council/PEAL	
SC	4.12.57	LT	L.5-VIII	-	Mar.73	31.12.72	RLA-C58	
	1. 7.65	FT	G.6-VII	1	Oct.73	31.12.72	RLA-C08	
	11.11.71	FT	G.4-II	-	Nov.73	31.12.72	Rockefeller F.	
SG	14. 5.59	IT	L.3-VIII	-	May.73	31.12.72	RLA-C58	
	5. 8.63	FT	G.6-VII	-	Oct.73	31.12.72	RLA-C08	
SQ	1. 5.70	LT	L.3-VI	-	Jul.73	31.12.72	RLA-C58	
	-	-	-	-	-	-	XB-1511	
	-	-	-	-	-	-	XB-1511	
	-	-	-	-	-	-	XB-1511	
	8. 3.66	FT	G.6-IV	-	Aug.73	31.12.72	RLA-C08	
	19. 6.67	IT	L.3-VI	-	Jun.73	31.12.72	RLA-C08	
	-	-	-	-	-	-	XB-1511	
	17. 4.72	FT	G.7-I	-	Apr.73	31.12.72	XB-1511	

(Continued)

CODE N°	NAME	NAT.	MARITAL STATUS	POST KEY CODE AND FUNCTIONAL TITLE	
<u>URBAN GROWTH SECTOR</u>					
57	Herrera, Ligia	PAN.	D	Geographer	
58	Pecht, Waldemiro	DRA.	M	Economist	
59	Olivares, Fernando	CHI.	M	Research Assistant	
<u>COORDINATION AREA N° 4</u>					
60	Somoza, Jorge	ARG.	M	Deputy Director	SB
61	Alvarez, Leonel	CHI.	M	Assigned Expert	
62	Figueroa, Rosa	CHI.	M	Bilingual Secretary	
<u>DEMOGRAPHIC BULLETIN SECTOR</u>					
63	Vidal, Jorge	CHI.	M	Junior Demographer	
<u>DATA ADJUSTMENT AND EVALUATION SECTOR</u>					
64	Arretx, Carmen	CHI.	M	Demographer	SH
65	Pujol, José Miguel	CHI.	S	Junior Demographer	
<u>HISTORICAL DEMOGRAPHY AND INTERNATIONAL MIGRATION SECTOR</u>					
66	Morales, Julio	CHI.	M	Demographer	SM
<u>COORDINATION AREA N° 5</u>					
67	Recruitment Pending	-	-	Chief Adm. Officer	
68	Recruitment Pending	-	-	Adm. Officer	
69	Trautmann, Lucía	CHI.	M	Adm. Assistant	
70	Recruitment Pending	-	-	Bilingual Secretary	

EOB DATE	TYPE APPT.	LEVEL STEP	LNG ALL.	NEXT SAL INC.	CONTRACT EXPIRES	FINANCING	REMARKS
9. 8.71	FT	L.4-II	-	Aug.73	8. 2.73	IDB	
19. 3.71	FT	L.3-II	-	Aug.73	18. 2.73	IDB	
10. 2.65	SP	G.5-III	-	Dic.73	31.12.72	U.Chile/UN	
20. 4.56	PT	P.5-VI	-	Nov.73	-	RLA-050	Secondment to CELADE through 31.12.72
1. 2.72	-	P.4-V	-	-	31. 1.74	OAS	OAS Staff member detailed to CELADE Hdqs.
8. 4.71	FT	G.5-II	I	Jul.73	31.12.72	RLA-008	
1. 7.60	IT	L.2-II	-	May.73	31.12.72	RLA-008	
1.11.67	IT	L.2-XI	-	-	31.12.72	RLA-058	
1. 8.69	IT	L.2-III	-	Aug.73	31.12.72	RLA-008	
1. 8.69	IT	L.3-VII	-	Aug.73	31.12.72	RLA-058	
-	-	-	-	-	-	RLA-050	
-	-	-	-	-	-	RLA-008	
1. 3.65	FT	G.7-III	-	Feb.73	31.12.72	RLA-008	
-	-	-	-	-	-	RLA-008	

(Continued)

CODE No	NAME	NAT.	MARITAL STATUS	POST KEY CODE AND FUNCTIONAL TITLE
<u>PERSONNEL AND TRAVEL SECTION</u>				
71	Forner, Sonia	CHI.	M	Adm. Assistant
72	Cortéz, Blanca	CHI.	M	Travel Clerk
73	Saavedra, Verónica	CHI.	S	Bilingual Typist
<u>GENERAL SERVICES SECTOR</u>				
74	Rojas, Sonia	CHI.	M	Senior Adm. Assistant
75	Martínez, José	CHI.	M	Senior Driver
76	Serrano, Fernando	CHI.	M	Custodial Foreman
77	Vega, Rudolfo	CHI.	M	Custodial Foreman
78	Portales, Patricia	CHI.	M	Senior Telephone Operator
79	Múñez, Alejandro	CHI.	M	Senior Receptionist
80	Elmes, Mario	CHI.	M	Night Watchman
81	Gonçalves, Consuelo	CHI.	S	Telephone Operator
82	Ilabaca, Carlos	CHI.	M	Assistant Electrician
83	Valdés, Eduardo	CHI.	M	Driver-Messenger
84	Bobadilla, Humberto	CHI.	M	Driver
85	González, José A.	CHI.	M	Custodial
86	Aravena, Guillermo	CHI.	M	Messenger
87	Martínez, Arnoldo	CHI.	M	Messenger
88	Martínez, Luis	CHI.	S	Messenger
89	Gormaz, Patricio	CHI.	M	Messenger
90	Delgado, Gilberto	CHI.	M	Messenger
91	Macías, Guillermo	CHI.	M	Messenger
92	Machuca, Manuel	CHI.	S	Messenger
93	Quintanilla, Hugo	CHI.	S	Messenger
94	Fuentes, Rafael	CHI.	M	Custodial
<u>SECRETARIAL POOL SECTION</u>				
95	Sánchez, Raquel	CHI.	M	Bilingual Secretary
96	Corda, Ximena	CHI.	S	Bilingual Typist
97	Ofaz, Sonia	CHI.	M	Bilingual Typist

EOD DATE	TYPE APPT.	LEVEL STEP	LNG. ALL.	NEXT SAL. INC.	CONTRACT EXPIRES	FINANCING	REMARKS
23. 1.67	FT	G.7-IV	-	Cct.73	31.12.72	RLA-000	
1. 4.72	FT	G.5-III	-	Apr.73	31.12.72	RLA-000	
1. 8.71	FT	G.4-VI	1	Aug.73	31.12.72	RLA-000	
17. 5.66	FT	G.8-III	1	May.73	31.12.72	RLA-050	
16. 6.59	SP	G.5-III	-	May.73	31.12.72	U.Chitc/UN	
6.12.65	SP	G.5-III	-	May.73	31.12.72	U.Chitc/UN	
1.10.63	SP	G.5-III	-	May.73	31.12.72	U.Chitc/UN	
28.11.66	FT	G.4-VI	-	Aug.73	31.12.72	RLA-000	
1. 4.69	FT	G.4-III	-	May.73	31.12.72	RLA-000	
1. 9.65	FT	G.3-III	-	May.73	31.12.72	RLA-000	
1. 7.71	FT	G.3-III	-	Jul.73	31.12.72	RLA-000	
1.12.66	FT	G.3-III	-	May.73	31.12.72	RLA-000	
23. 3.72	FT	G.3-I	-	Mar.73	31.12.72	RLA-050	
1. 5.71	FT	G.2-VII	-	Jun.73	31.12.72	RLA-000	
1. 8.71	FT	G.2-V	-	Aug.73	31.12.72	RLA-000	
1. 4.68	FT	G.2-IV	-	Nov.73	31.12.72	RLA-000	
20. 7.71	FT	G.2-III	-	Jul.73	31.12.72	RLA-000	
19. 7.71	FT	G.2-III	-	Jul.73	31.12.72	RLA-000	
22.11.71	FT	G.2-III	-	Nov.73	31.12.72	RLA-000	
23. 3.72	FT	G.2-I	-	Mar.73	31.12.72	RLA-050	
3. 7.72	FT	G.2-I	-	Jul.73	31.12.72	RLA-000	
3. 7.72	FT	G.2-I	-	Jul.73	31.12.72	RLA-000	
19. 6.72	FT	G.2-I	-	Jun.73	31.12.72	RLA-000	
10.11.71	FT	G.1-III	-	Nov.73	31.12.72	RLA-000	
7. 2.72	FT	G.4-IV	1	Feb.73	31.12.72	RLA-000	
1. 9.72	FT	G.4-IV	-	Sep.73	31.12.72	RLA-000	
1.12.71	FT	G.4-IV	-	Dec.73	31.12.72	RLA-000	

(Continued)

CODE Nº	NAME	NAT.	MARITAL STATUS	POST KEY CODE AND FUNCTIONAL TITLE	EOD - DATE
98	Recart, Adriana	CHI.	S	Monolingual Typist	17. 4.72
99	Van der Schraft, M.A.	CHI.	M	Monolingual Typist	22. 9.70
100	Braithwaite, Julie	USA.	S	Bilingual Typist	8. 8.72
<u>EQUIPMENT AND SUPPLIES SECTOR</u>					
101	González, José Miguel	CHI.	M	Equip. Supplies Clerk	3. 9.65
102	León, Juan	CHI.	M	Equip. Supplies Clerk	1. 4.68
<u>FINANCE SECTOR</u>					
103	Lartiga, Héctor	CHI.	M	Senior Account Ass.	1. 1.67
104	Díaz, Domingo	CHI.	M	Adm. Assistant	1. 1.69
105	Carmona, Pedro	CHI.	M	Finance Assistant	1.11.70
106	Blanch, Raúl	CHI.	M	Finance Clerk	20. 9.72
107	Valdés, Ana María	CHI.	S	Bilingual Typist	12. 6.72
<u>REGISTRY SECTOR</u>					
108	Bozt, Zaida	CHI.	S	Registry Clerk	20. 1.69
109	De Barros, Lenise	BRA.	M	Registry Clerk	14. 8.72
110	Cook, Jorge	CHI.	S	Messenger	23. 3.72
<u>LIBRARIAN AND DOCUMENTATION SECTOR</u>					
111	Recruitment Pending	-	-	Documentation Expert SV	-
112	Labbé, Eugenia	CHI.	M	Assistant Librarian	1. 8.65
113	Sateler, María Cristina	CHI.	S	Assistant Library Clerk	8. 8.62
114	Ferrer, Mónica	CHI.	S	Assistant Library Clerk	14.10.71
115	Nadal, Victoria	CHI.	M	Monolingual Typist	1. 4.68
116	Rahmer, Adelaida	CHI.	S	Monolingual Typist	1. 7.68
117	Jones, Alejandro	CHI.	M	Receptionist	1.12.71
<u>EDITORIAL AND PUBLICATION SECTOR</u>					
118	Nascimento, Carlos	CHI.	M	Chief Publication and Editorial Services SS	1. 7.71

TYPE APPT.	LEVEL STEP	ING. ALL.	NEXT SAL INC.	CONTRACT EXPIRES	FINANCING	REMARKS
FT	G.4-III	-	Apr.73	31.12.72	RLA-008	
FT	G.4-III	-	Sep.73	31.12.72	RLA-008	
FT	G.4-II	-	Aug.73	31.12.72	RLA-008	
SP	G.3-II	-	May.73	31.12.72	U.Chite/UN	
FT	G.3-II	-	May.73	31.12.72	RLA-008	
SP	G.8-II	-	May.73	31.12.72	U.Chite/UN	
FT	G.7-II	-	Sep.73	31.12.72	RLA-008	
FT	G.6-III	-	May.73	31.12.72	RLA-058	
FT	G.5-I	-	Sep.73	31.12.72	RLA-008	
FT	G.4-II	-	Jun.73	31.12.72	RLA-008	
FT	G.5-IV	-	Dec.73	31.12.72	RLA-008	
FT	G.4-II	-	Aug.73	31.12.72	RLA-008	
FT	G.2-I	-	Mar.73	31.12.72	RLA-058	
-	-	-	-	-	RLA-058	
FT	G.6-VI	-	Aug.73	31.12.72	RLA-008	
FT	G.5-IX	-	Aug.73	31.12.72	RLA-008	
FT	G.5-II	-	Oct.73	31.12.72	IDB	
FT	G.4-IV	-	Sep.73	31.12.72	RLA-008	
FT	G.4-V	-	Jul.73	31.12.72	RLA-008	
FT	G.3-II	-	Dec.73	31.12.72	RLA-008	
IT	L.3-II	-	Jul.73	31.12.72	RbA-058	

(Continued)

CODE No	NAME	NAT.	MARITAL STATUS	POST KEY CODE AND FUNCTIONAL TITLE	EOD DATE
119	Ortiz, Enriqueta	CHI.	M	Senior Secretary	15.11.63
120	Reyes, Gladys	CHI.	M	Senior Secretary	17. 2.65
<u>PRINTING SECTION</u>					
121	Medina, Néstor	CHI.	M	Senior Document Clerk	6.10.63
122	Pastén, Vidal	CHI.	M	Offset Operator	1. 8.64
123	Bravo, José Miguel	CHI.	M	Mimeograph Operator	26. 8.68
124	Macstro, José María	ARG.	M	Offset Operator	1. 4.72
125	Rodríguez, Mario	CHI.	M	Bookbinder	26. 8.68
126	González, Daniel	CHI.	M	Junior Mimeograph Operator	5. 8.68
<u>COPY DESK SECTION</u>					
127	Anguita, Ximena	CHI.	M	Senior Document Clerk	21. 6.65
128	Aybar, Angelina	DCH.	M	Proofreader	30.10.61
<u>DISTRIBUTION AND PUBLIC RELATIONS SECTION</u>					
129	Ortizar, Rosa María	CHI.	M	Supervisor Document Distribution Section	1. 5.71
130	Olivares, Sergio	CHI.	S	Junior Clerk	26.11.68
<u>TRANSLATIONS SECTION</u>					
131	Samsing, Patricia	CHI.	M	Assistant Editor	1. 1.71
<u>CELADE SUBCENTRE</u>					
1. Professional Staff					
132	Macció, Guillermo	URU.	M	Assistant Director	SI 1.11.67
133	Isea, Pedro	VEN.	M	Assigned Expert	15. 5.72
134	Nieto, Bolívar	ECU.	M	Demographer	SJ 4. 6.69
135	Camisa, Zulma	ARG.	S	Demographer	SC 6.11.67

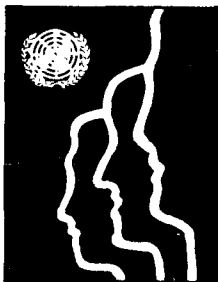
TYPE APPT.	LEVEL STEP	LNG ALL.	NEXT SAL INC.	CONTRACT EXPIRES	FINANCING	REMARKS
FT	G.6-VII	-	Oct.73	31.12.72	RLA-008	
FT	G.6-III	-	May.73	31.12.72	RLA-008	
SP	G.6-II	-	May.73	31.12.72	U.Chile/UN	
SP	G.4-II	-	May.73	31.12.72	U.Chile/UN	
FT	G.3-IV	-	Dic.73	31.12.72	RLA-008	
FT	G.3-II	-	Apr.73	31.12.72	RLA-058	
FT	G.3-II	-	May.73	31.12.72	RLA-008	
FT	G.2-II	-	Apr.73	31.12.72	RLA-008	
FT	G.6.V	-	Jul.73	31.12.72	RLA-008	
FT	G.5-IX	-	Oct.73	31.12.72	RLA-008	
FT	G.6-II	-	May.73	31.12.72	RLA-008	
FT	G.4-III	-	Mar.73	31.12.72	RLA-008	
FT	G.7-IX	-	-	31.12.72	RLA-008	
LT	L.4-II	-	May.73	31.12.72	RLA-058	
IT	L.4-I	-	May.73	31.12.72	XB-1377	ECLA staff member de- tailed to CELADE Sub- Centre
IT	L.3-X	-	Jun.73	31.12.72	RLA-058	
IT	L.3-VI	-	Nov.73	31.12.72	RLA-058	

(Continued)

CODE Nº	NAME	NAT.	MARITAL STATUS	POST KEY CODE AND FUNCTIONAL TITLE
136	Muschkin, A Rosa	PAN.	M	Administer Officer
137	Lonis, Nelson	COL.	M	Physician Demographer
138	Ortega, Antonio	ARG.	M	Demographer SP
139	Alens, Alex	SAL.	S	Demographer SR
140	Alberts, Joop	HOL.	M	Junior Demographer
141	García, Agustín	PAN.	M	Junior Demographer
142	Campanario, Paulo	BRA.	M	Junior Demographer
143	Dierckxsons, W.	HOL.	M	Associate Expert
144	Recruitment Pending	-	-	Economist
145	Recruitment Pending	-	-	Adm. Officer
2. <u>Non-professional staff</u>				
146	Bermúdez, Alicia	CRI.	S	Research Assistant
147	Quirós, Franklin	CRI.	M	Finance Assistant
148	Chaverri, Mayra	CRI.	S	Secretary
149	Jiménez, A. Lucía	CRI.	S	Sr. Library clerk
150	Morales, Ana Isabel	CRI.	S	Secretary
151	Arias, Enrique	CRI.	M	Statistical Clerk
152	Abanca, Nuria	CRI.	S	Bilingual Typist
153	Araya, Juanita	CRI.	S	Secretary
154	Mendoza, Vilma	CRI.	S	Monolingual Secretary
155	Herrera, Luis	CRI.	M	Driver
156	Gabert, Marjorie	CRI.	M	Clerk Receptionist
157	Leal, Elder	CRI.	S	Mimeo. Operator
158	Portuguez, Orlando	CRI.	S	Messenger

EOD DATE	TYPE APPT.	LEVEL STEP	LNG ALL.	NEXT SAL INC.	CONTRACT EXPIRES	FINANCING	REMARKS
19. 2.72	IT	L.3-IV		Feb.73	18. 2.73	XB-1370	
25. 6.70	IT	L.3-III		Jun.73	31.12.72	RLA-008	
1. 3.68	IT	L.3-II		Jul.73	30. 6.73	RLA-050	
4. 8.68	IT	L.2-IX		Aug.73	31.12.72	RLA-050	
13. 7.67	IT	L.2-VIII		Aug.73	30. 2.72	RLA-008	
1. 4.67	IT	L.2-II		Jul.73	30.12.72	RLA-008	
1. 3.72	IT	L.2-I		Mar.73	28. 2.73	XB-1370	
11. 4.71	IT	L.1-III		Apr.73	10. 4.73	XB-C034	
-	-	-	-	-	-	RLA-008	
-	-	-	-	-	-	RLA-008	
1.10.72	FT	G.5-V		Oct.73	31.12.72	RLA-008	
22. 2.71	FT	G.5-III		Jul.73	31.12.72	RLA-008	
11. 8.69	FT	G.4-IX		Jun.73	31.12.72	RLA-008	
12. 2.68	FT	G.4-V		Jun.73	31.12.72	RLA-008	
9. 3.71	FT	G.4-V		Jul.73	31.12.72	RLA-008	
5. 3.69	FT	G.3-IX		Jul.73	31.12.72	RLA-008	
21. 4.71	FT	G.3-VI		Jul.73	31.12.72	RLA-008	
1. 4.72	FT	G.3-I		Apr.73	31.12.72	RLA-008	
1. 6.72	FT	G.3-I		Jun.73	31.12.72	RLA-008	
3. 5.71	FT	G.2-VII		Jul.73	31.12.72	RLA-008	
2. 7.70	FT	G.2-IV		Jun.73	31.12.72	RLA-008	
1.10.69	FT	G.1-VII		Jul.73	31.12.72	RLA-008	
1. 3.71	FT	G.1-IV		Jul.73	31.12.72	RLA-008	





CENTRO LATINOAMERICANO DE DEMOGRAFÍA
CELADE

Sede: J. M. Infante 9, Casilla 91, Teléfono 257806
Santiago (Chile)

Subsede: Ciudad Universitaria Rodrigo Facio
Apartado Postal 5249
San José (Costa Rica)